



## Guildhouse Street, SW1V

£692 Per week

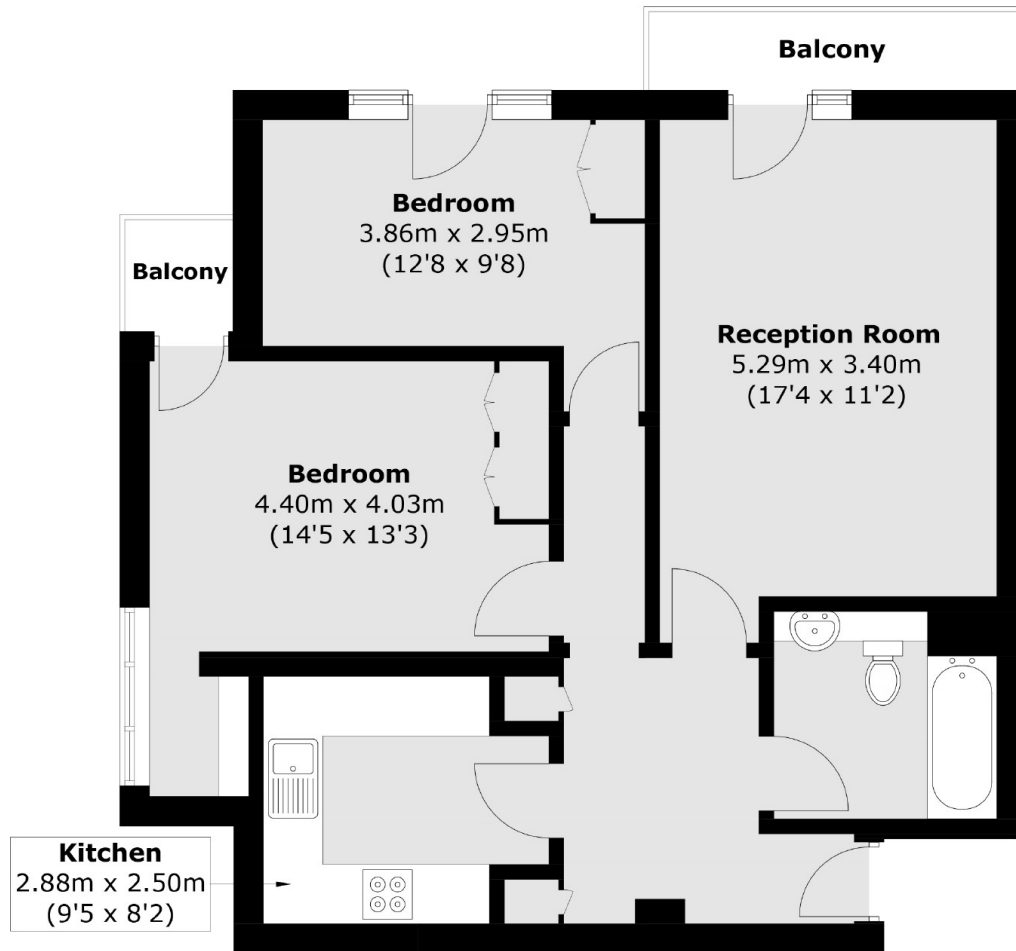
A bright and spacious modern two bedroom apartment with two balconies within a purpose built development with concierge and lift access and moments from Victoria station and Buckingham Palace.

Guildhouse Street is ideally located moments from Victoria station as well as a wealth of boutique shops, fashionable eateries and artisan bakeries on Wilton Road and Victoria Street. The green open spaces of St James's Park are also within close proximity.

### Features

- Two Bedrooms
- One Bathroom
- Balconies
- Wood Floors
- Separate Kitchen
- Concierge

Guildhouse Street,  
London, SW1V



Total area (approx.): 64.2 sq. m (691.0 sq. ft)  
Balcony : 4.2 sq. m (45.2 sq. ft)