



Wyndcliff Road, SE7

£425,000

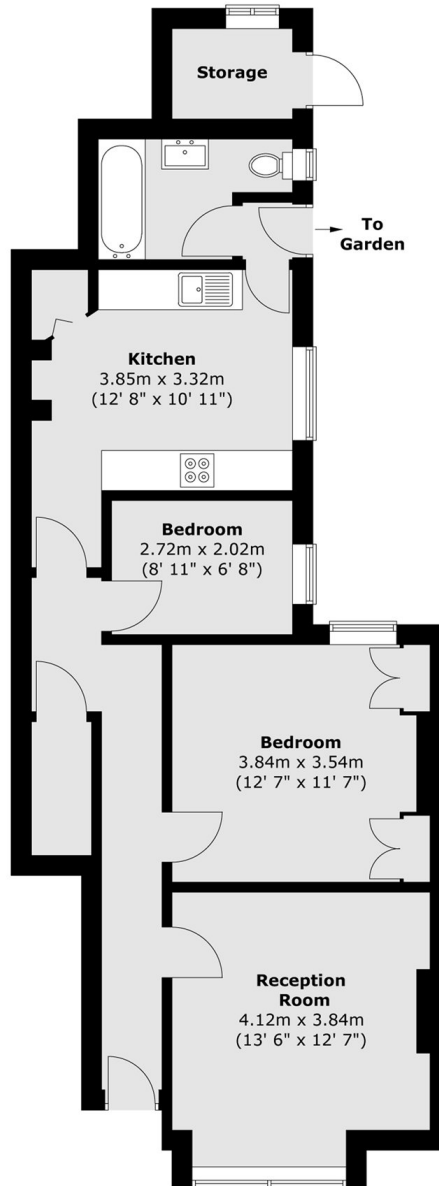
This beautifully designed, two bedroom garden maisonette of over 700 square feet occupies the ground floor of Edwardian property. It has impressive proportions, a bright front reception and a superb eat-in kitchen opening onto a delightfully sunny garden.

Wyndcliff Road is conveniently located for both Charlton Station and Westcombe Park Station, providing excellent links into central London. The shops, cafés and amenities of Blackheath Royal Standard are nearby, as are the green open spaces of Greenwich Park and the popular local schools in the area.

Features

- Share Of Freehold
- Two Bedroom
- Private Garden
- Close To Shops & Transport
- Large Kitchen
- Private Entrance

Wyndcliff Road,
London, SE7



Total area (approx.) : 67.3 sq. m (724 sq. ft)
Total storage area (approx.) : 2.6 sq. m (28 sq. ft)