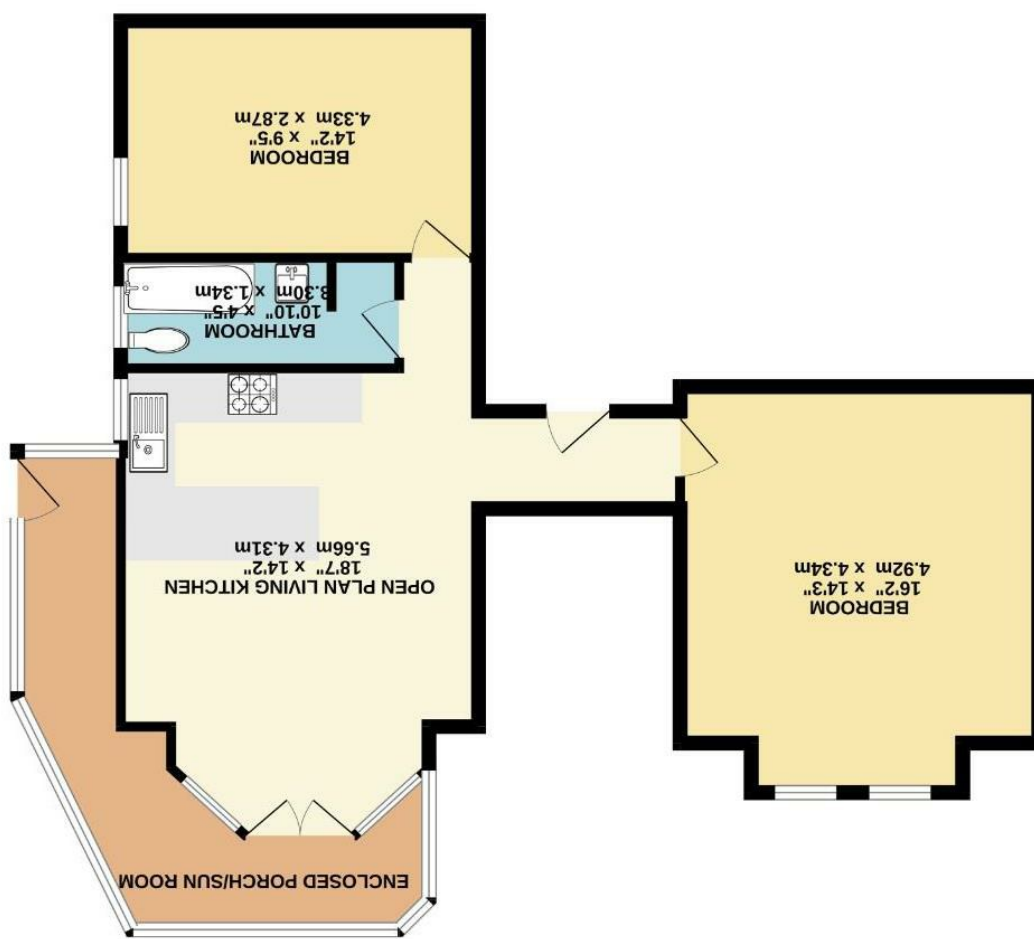


Fishwick nor the vendor or lessor accept any responsibility in respect of these particulars, which are not intended to be statements or representations of fact and any intending purchaser or lessee must satisfy himself by inspection or otherwise as to the correctness of each of the statements contained in these particulars. Any floorplans on this brochure are for illustrative purposes only and are not necessarily to scale.



802 sq.ft. (74.5 sq.m.) approx.





Palatine Road, Didsbury M20 2GH

£250,000

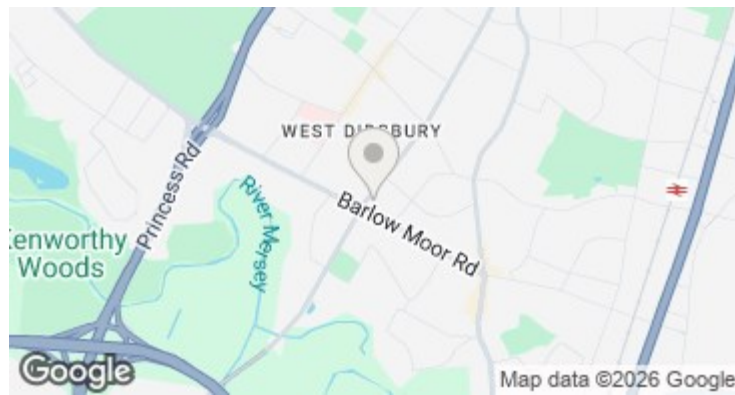


### The Property

A stylish TWO DOUBLE BEDROOM lower ground floor apartment forming part of an ATTRACTIVE PERIOD CONVERSION and enjoying a great location with easy access to DIDSBURY, WEST DIDSBURY & THE METROLINK. 802 sq ft. The living space is well presented throughout and ready to move into, with numerous noteworthy features including two excellent double bedrooms, an open plan living/kitchen area with a range of modern units, bathroom with white suite, private enclosed entrance porch/sun room, uPVC double glazing and gas central heating. The property lies within generous grounds with well tended communal gardens and residents parking. \*NO ONWARD CHAIN\*.

### Directions

M20 2GH



- Stylish Apartment
- Attractive Period Conversion
- Two Double Bedrooms
- Open Plan Living/Kitchen
- Modern Fitted Kitchen
- Covered Porch/Sun Room
- Gas Central Heating
- uPVC Double Glazing
- No Onward Chain
- Great Location

Postcode - M20 2GH

EPC Rating - C

Floor Area - 802.00 sq ft

Local Authority - Manchester City Council

Council Tax - B

