



31 Loch Assynt, East Kilbride, G74 2DW
Glasgow

Offers Over
£90,000

St Leonards is renowned for its peaceful setting, excellent amenities, and easy access to local shops, schools, leisure facilities, and public transport links. It remains one of East Kilbride's most desirable residential pockets, perfect for convenient and comfortable living.

Bedrooms: 2

Bathrooms: 1

Receptions: 1

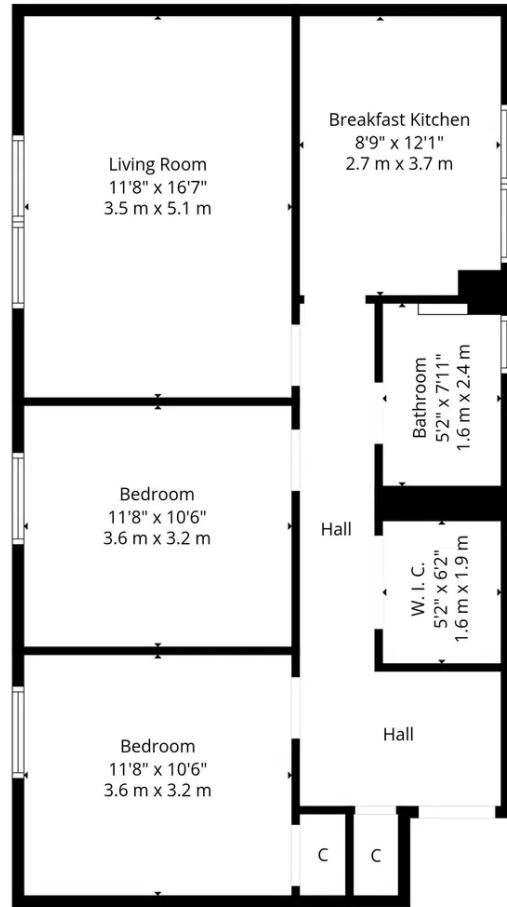
Tenure: Freehold

Property Type: Flat

- Top floor flat with sweeping panoramic views
- Bright, spacious lounge with exceptional natural light
- Beautiful dining sized kitchen
- Two generous double bedrooms with storage
- Versatile walk in storage room / study / dressing room
- Contemporary bathroom with shower
- Immaculate condition throughout, move-in ready
- Gas central heating & Double glazing
- Well maintained communal gardens
- Residents parking



**Scullion**
LIVING



TOTAL: 777 sq. ft, 72 m2
 Ground floor: 777 sq. ft, 72 m2
 EXCLUDED AREAS: WALLS: 60 sq. ft, 6 m2

All Measurements Are Calculated By Cubicasa Technology - Deemed Highly Reliable But Not Guaranteed. Visit Our Website - <https://www.filmworx.co.uk>



Scullion Living

Tel: 01698 286 111

Email: info@scullionliving.com

Address: 105 Cadzow Street, Hamilton, ML3 6HG



Elevated above the surrounding landscape in the highly sought after St Leonards area, this exceptional top floor flat offers a rare combination of style, space, and breath taking open views that stretch for miles across East Kilbride and beyond.

From the moment you enter, a sense of calm and warmth welcomes you. The reception hallway provides access to all apartments and features an impressive walk in storage room, a versatile space perfect as a home office, dressing room, or generous storage area.

At the heart of the home lies the beautifully bright lounge, a wonderfully proportioned space designed for both relaxation and entertaining. The lounge flows seamlessly into the dining-sized kitchen, where expansive windows flood the room with natural light and showcase the remarkable views that define this property.



The flat boasts two spacious and airy double bedrooms, each enhanced by built in storage and ample floor space for additional furnishings. A stylish contemporary bathroom, complete with a quality shower and further elevates the home's comfort and appeal.

Immaculately presented throughout, this property is truly move in ready, offering an ideal opportunity for first-time buyers, or anyone seeking a beautifully maintained home in a prime residential location.