



**Castellain Road, W9**

**£1,350,000**

**Dexters**



## Castellain Road, W9

A distinctive top-floor, split-level apartment occupying a prime corner position on Lauderdale Parade, set within an attractive period conversion. The property features two generously sized bedrooms, including a principal bedroom with en suite, a separate kitchen, and a bright, spacious reception room leading onto a private terrace. Further benefits include useful storage space within the eaves.

The top floor apartment is set within an attractive period conversion in a prime corner position on Lauderdale Parade. The second floor comprises two generous bedrooms, including a principal bedroom with en suite, along with a separate wc and a well-proportioned, separate kitchen. A spiral staircase leads to the top floor, where a large, light-filled reception room creates an impressive living space. From here, there is direct access to a south-facing terrace. Further benefits include useful eaves storage and the added character of the split-level layout, enhancing both space and practicality throughout.

Castellain Road is centrally located and provides convenient access to a number of local shops, cafés and Paddington Recreation Ground whilst also being within walking distance of Little Venice and Paddington through the Bakerloo line.

### Features

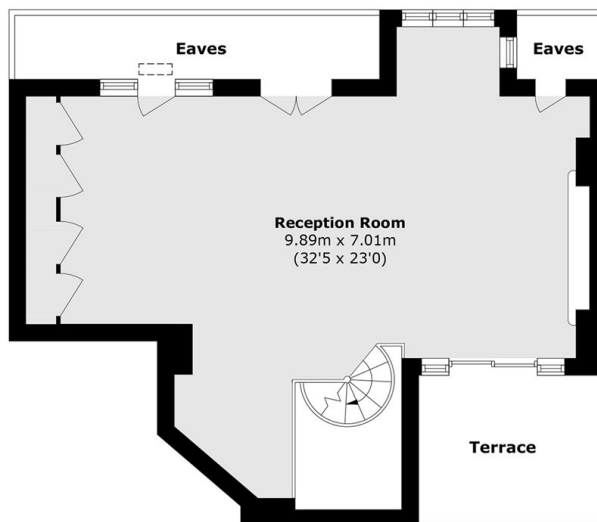
- Prime Location
- Chain Free
- Low Service Charge
- Triple Aspect
- New Lease of 999 Years
- Great Transport Links



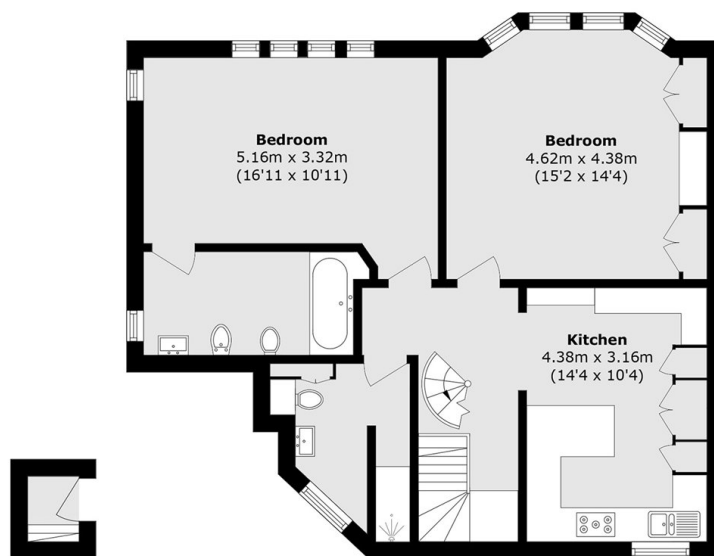




# Castellain Road, London, W9



**Third Floor**



**First Floor**

**Second Floor**

Total area (approx.): 132.6 sq. m (1427.3 sq. ft)  
(Excluding Eaves)

Terrace area (approx.): 8.4 sq. m (90.4 sq. ft)