



## HOLLAND ROAD, W14

£2,600 per month

The property is well presented throughout and comprises a stunning reception room with a cleverly designed study area, a well-appointed bedroom with fitted storage and en suite bathroom as well as fully

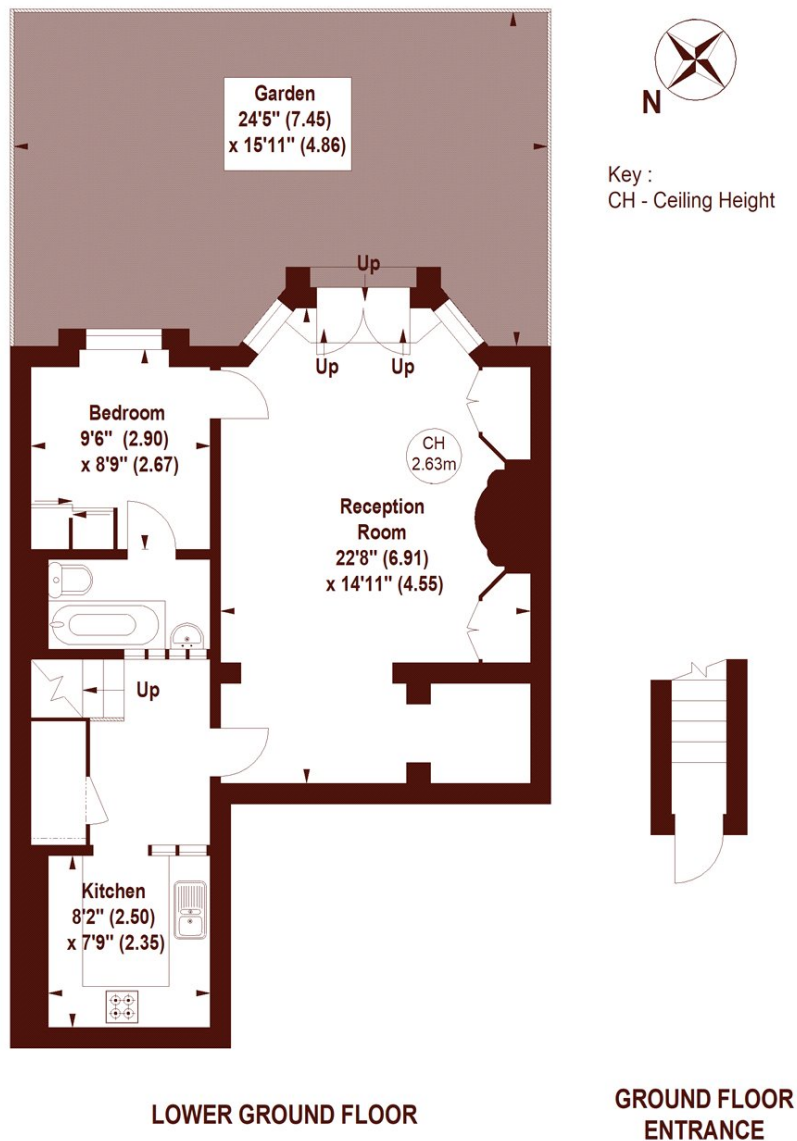
One Double Bedroom  
Stunning Reception

Large Patio Garden  
Communal Garden Access

# STEP INSIDE HOLLAND ROAD

## Holland Road, W14

APPROX. GROSS INTERNAL FLOOR AREA 610 SQFT / 56.67 SQM



Not to scale, for guidance only and must not be relied upon as a statement of fact.  
All measurements and areas are approximate only

Holland Park  
020 7605 6895

Energy Rating: We aim to make our particulars both accurate and reliable. However, they are not guaranteed; nor do they form part of an offer or contract. If you require clarification on any points then please contact us, especially if you're traveling some distance to view. Please note that appliances and heating systems have not been tested and therefore no warranties can be given as to their good working order

MARSH &  
PARSONS