



Guide Price
£210,000

Leasehold

1x  1x  1x 

Jade Close, London, E16

 **DOUGLAS
ALLEN**
Helping you move forwards



Main features

- Open plan purpose built flat with allocated parking
- LONG LEASE
- Chain Free
- Bus & road links to Westfield Shopping Centre
- DLR rails links to the City & Central London
- Ideal for any first time buyers

Accommodation

FIRST FLOOR

Entrance Hall

Lounge/Diner: 15'9 x 10'8 (4.80m x 3.25m)

Kitchen: 10'4 x 7'4 (3.15m x 2.24m)

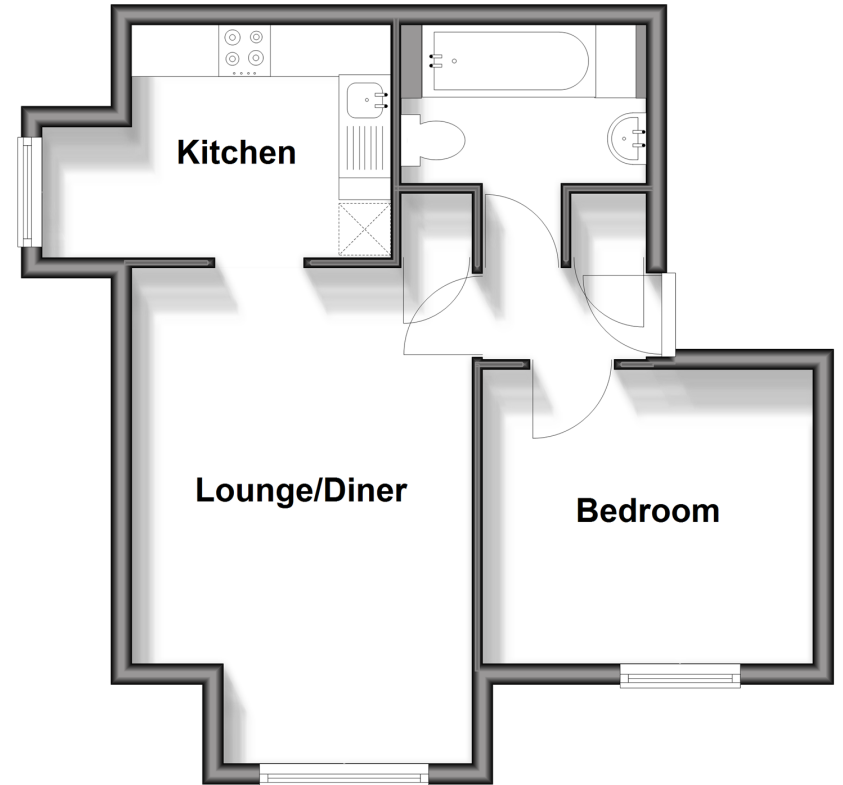
Bedroom: 10'5 x 8'8 (3.18m x 2.64m)

Bathroom

OUTSIDE

Allocated Parking

First Floor
Approx. 38.9 sq. metres (418.4 sq. feet)



Call East Ham - 020 8472 8140 ■ douglasallen.co.uk

- A private rental licensing scheme applies to some properties in this area, please check with the Local Authority before proceeding
- Legal advice should be taken to verify fixtures/fittings, planning, alterations and/or lease details
- Appliances & services are untested, dimensions are approximate and floor plans are not to scale



51315456/20260314/CN/MH