



Daisy Avenue, March

Guide Price £425,000 - £435,000 Freehold

**Sharman
Quinney**

Key Features



- Beautifully Presented Family Home
- Sought After Location
- Walking Distance to Town Centre and Local Schools
- Situated Directly on the Local Park with Views of the River Nene
- Low Maintenance Rear Garden

Entrance Hall -

Composite door to front with sideline windows, hard flooring, access into lounge, playroom, kitchen/diner and downstairs WC. Stairs to first floor with bespoke understairs storage.

Lounge -

Double glazed window to front and side, fitted carpet.

Playroom -

Double glazed window to front, fitted carpet. Currently utilised as a playroom but could be used as an office or formal dining room.

Downstairs WC -

Hard flooring from hallway continued. Low rise WC and wall mounted sink.



Kitchen/Diner/Family Room -

Hard flooring. Dual aspect, double glazed windows to rear garden and patio doors onto patio. A range of base and wall units in a white gloss finish with worktop space over. Integrated appliances including, fridge/freezer, eye level double oven, gas hob with overhead extractor fan, dishwasher and stainless-steel sink. A brilliant open plan space, truly the heart of the home.

Utility Room -

Flooring from kitchen continued. Door to side leading out to gardens side access. Matching units to kitchen with stainless steel sink and space for washing machine and tumble dryer.

First Floor

Bedroom One -

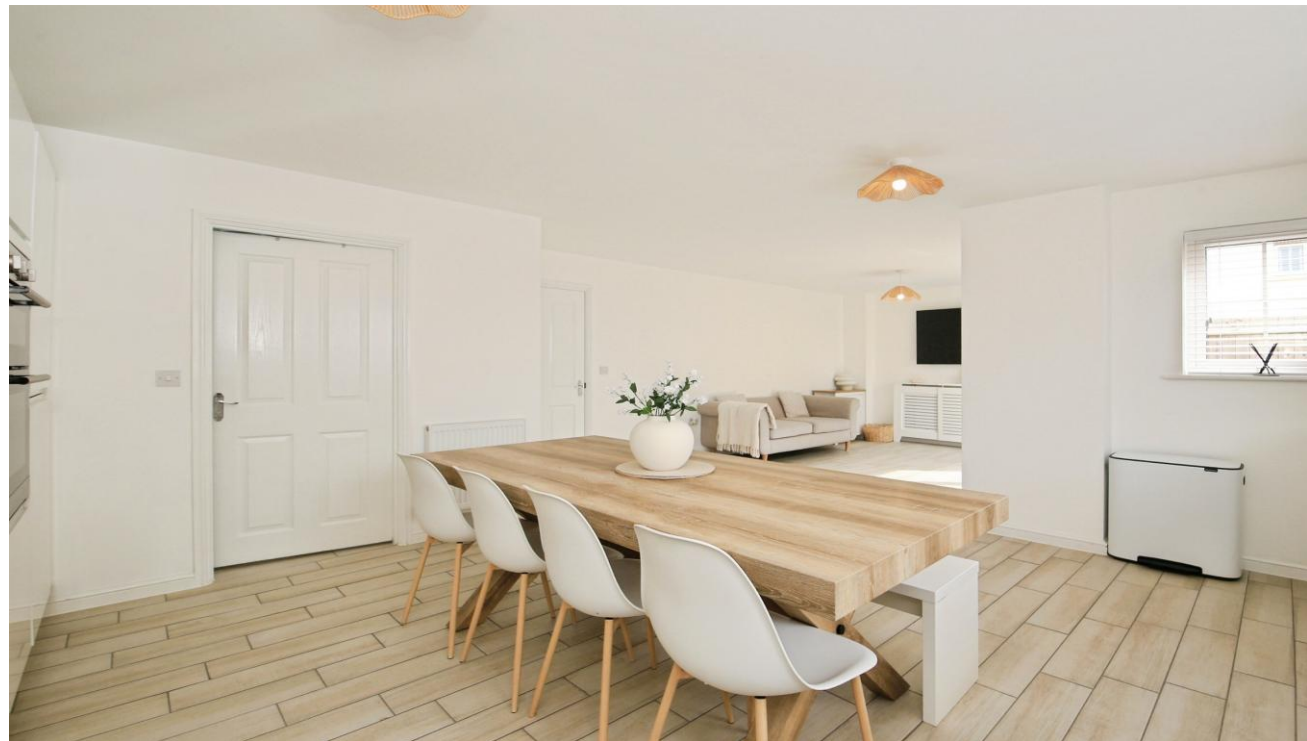
Window to rear overlooking garden and fields. Fitted carpets, built in wardrobes and access into the ensuite shower room.

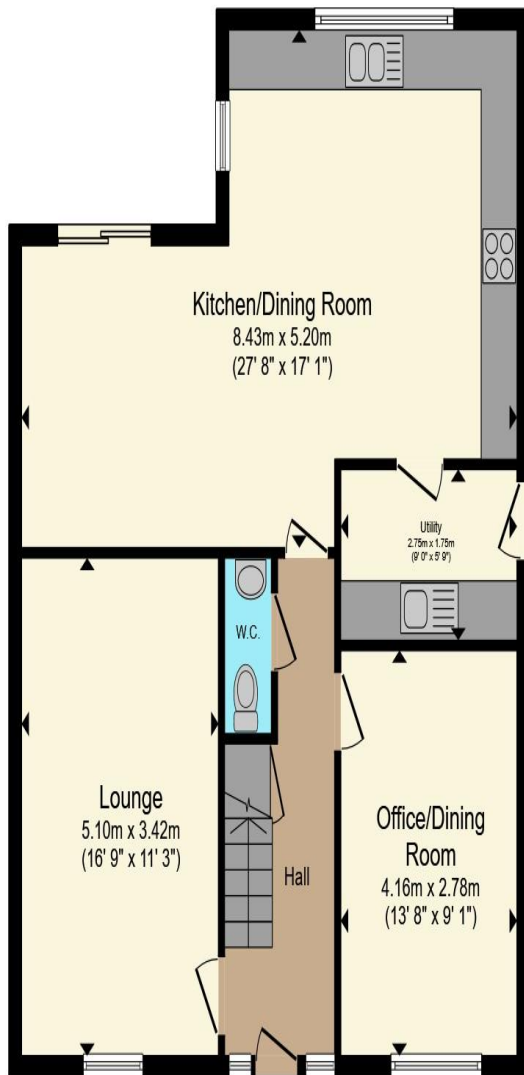
Ensuite -

Window to rear, hard flooring. Three-piece suite comprising of double shower cubicle, pedestal sink with tiled splashback and low-rise WC.

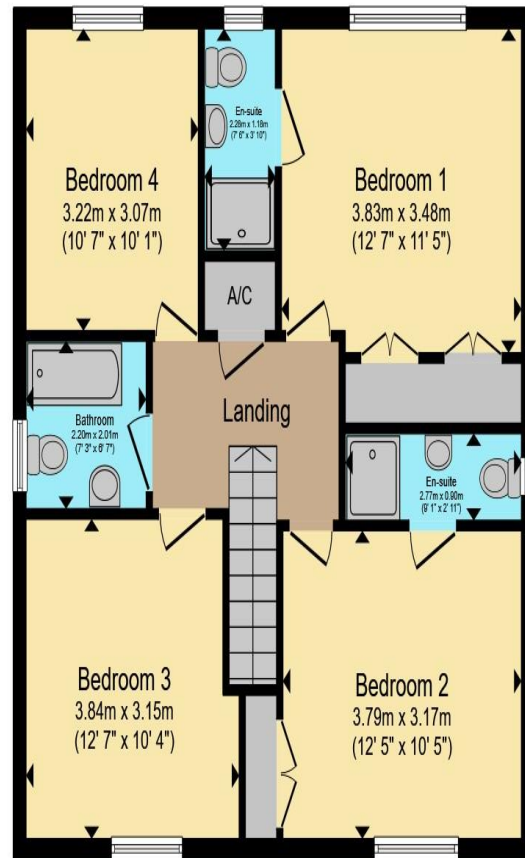
Bedroom Two -

Window to front with views of the park and river Nene. Fitted carpet, built in wardrobes and access into the ensuite shower room.





Ground Floor



First Floor

Total floor area 145.8 m² (1,570 sq.ft.) approx

This floor plan is for illustrative purposes only. It is not drawn to scale. Any measurements, floor areas (including any total floor area), openings and orientation are approximate. No details are guaranteed, they cannot be relied upon for any purpose and they do not form part of any agreement. No liability is taken for any error, omission or misstatement. A party must rely upon its own inspection(s). Powered by www.propertybox.io

**Sharman
Quinney**

Ensuite -
Window to side, hard flooring. Three-piece suite comprising of double shower cubicle, pedestal sink with tiled splashback and low-rise WC.

Bedroom Three -
Window to front, fitted carpet.

Bedroom Four -
Window to rear, fitted carpet.

Bathroom -
Window to side, hard flooring, three-piece suite comprising of panelled bath with mixer taps, pedestal sink and low-rise WC.

Outside -
This home is accessed from Daisy Avenue and sits on the edge of the estate overlooking the park/playing field. The front of the property offers ample off-road parking in front of the double garage. There are two spaces, however the property sits at the end of the road and with no passing vehicles the vendors have previously fit five vehicles which is a rarity on this estate. The double garage has two doors to the front and a side door which is accessed from the

To view this property call Sharman Quinney on:
01354 661166

Selling your property?

Contact us to arrange a **FREE** home valuation.

 01354 661166

 8 Broad Street, MARCH, Cambridgeshire, PE15 8TG

 march@sharmanquinney.co.uk

 www.sharmanquinney.co.uk



 SCAN ME



Sharman Quinney Holdings Limited is registered in England and Wales under company number 4174227, Registered Office is Cumbria House, 16-20 Hockliffe Street, Leighton Buzzard, Bedfordshire, LU7 1GN. VAT Registration Number is 500 2481 05.

1: These particulars do not constitute part or all of an offer or contract. 2: The measurements indicated are supplied for guidance only and as such must be considered incorrect. 3: Potential buyers are advised to recheck the measurements before committing to any expense. 4: Sharman Quinney has not tested any apparatus, equipment, fixtures, fittings or services and it is the buyers interests to check the working condition of any appliances. 5: Sharman Quinney has not sought to verify the legal title of the property and buyers must obtain verification from their legal representative. 6: Intending purchasers will be asked to produce identification documentation at a later stage and we would ask your co-operation in order that there will be no delay in agreeing the sale. Ref: MRC207125 - 0002

