



Canfield Gardens, NW6

£895,000

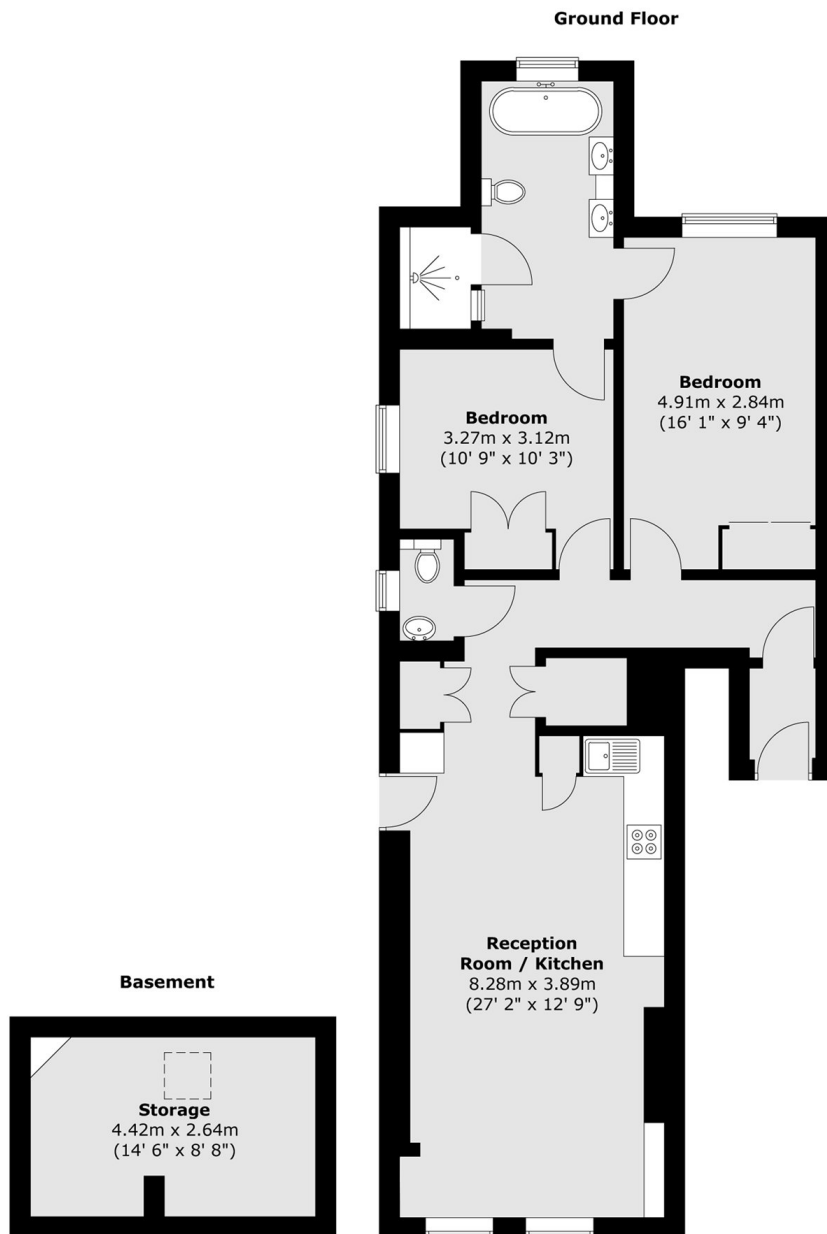
A stylishly refurbished ground floor flat with direct access to beautifully maintained communal gardens. Offering two double bedrooms, a sleek open plan kitchen living area, and a separate basement storage room directly accessed from the flat.

Canfield Gardens is a popular residential street equidistant to trendy West End Lane in West Hampstead with its convenient amenities and transport links and to the Finchley Road.

Features

- Two Double Bedrooms
- Communal Gardens
- Recently Refurbished
- Share Of Freehold
- Period Conversion
- Open Plan

Canfield Gardens, London, NW6



Total area (approx.) : 87.7 sq. m (944 sq. ft)