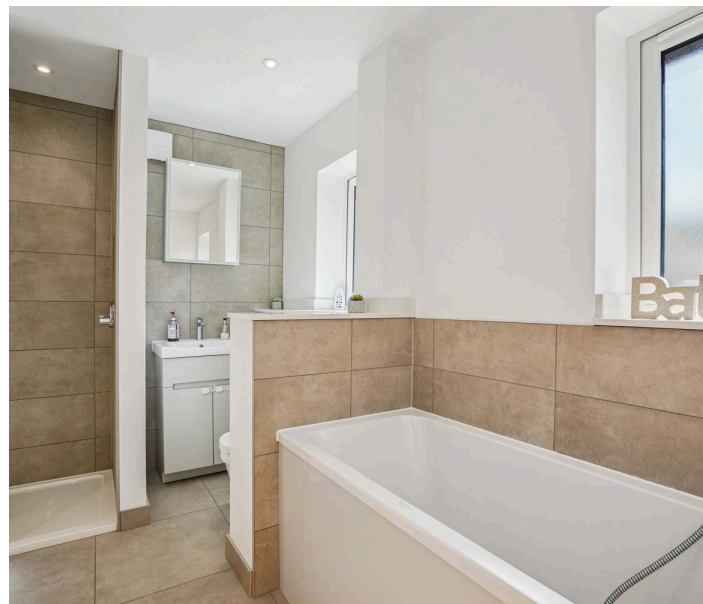




## 5 Birdlip Close, Witney

Guide Price £550,000





## 5 Birdlip Close

Witney

A beautifully-presented four-bedroom detached home located in an enviable position on the popular Deer Park development.

Council Tax band: D

Tenure: Freehold

EPC Energy Efficiency Rating: C

EPC Environmental Impact Rating:

- A beautifully presented four-bedroom detached home which has been much improved by the current owners located on the popular Deer Park development.
- Open plan kitchen/dining room with high-quality integrated appliances and quartz worktop.
- Landscaped low-maintenance south-westerly facing rear garden.
- Master bedroom spanning the entire top floor with quadruple wardrobe and stylish ensuite.
- 3/4 garage with utility room and off-street parking for three cars.
- Sitting room with bay window.





# Birdlip Close - Witney

Approximate Gross Internal Area = 141.4 sq m / 1522 sq ft  
(Including Garage)

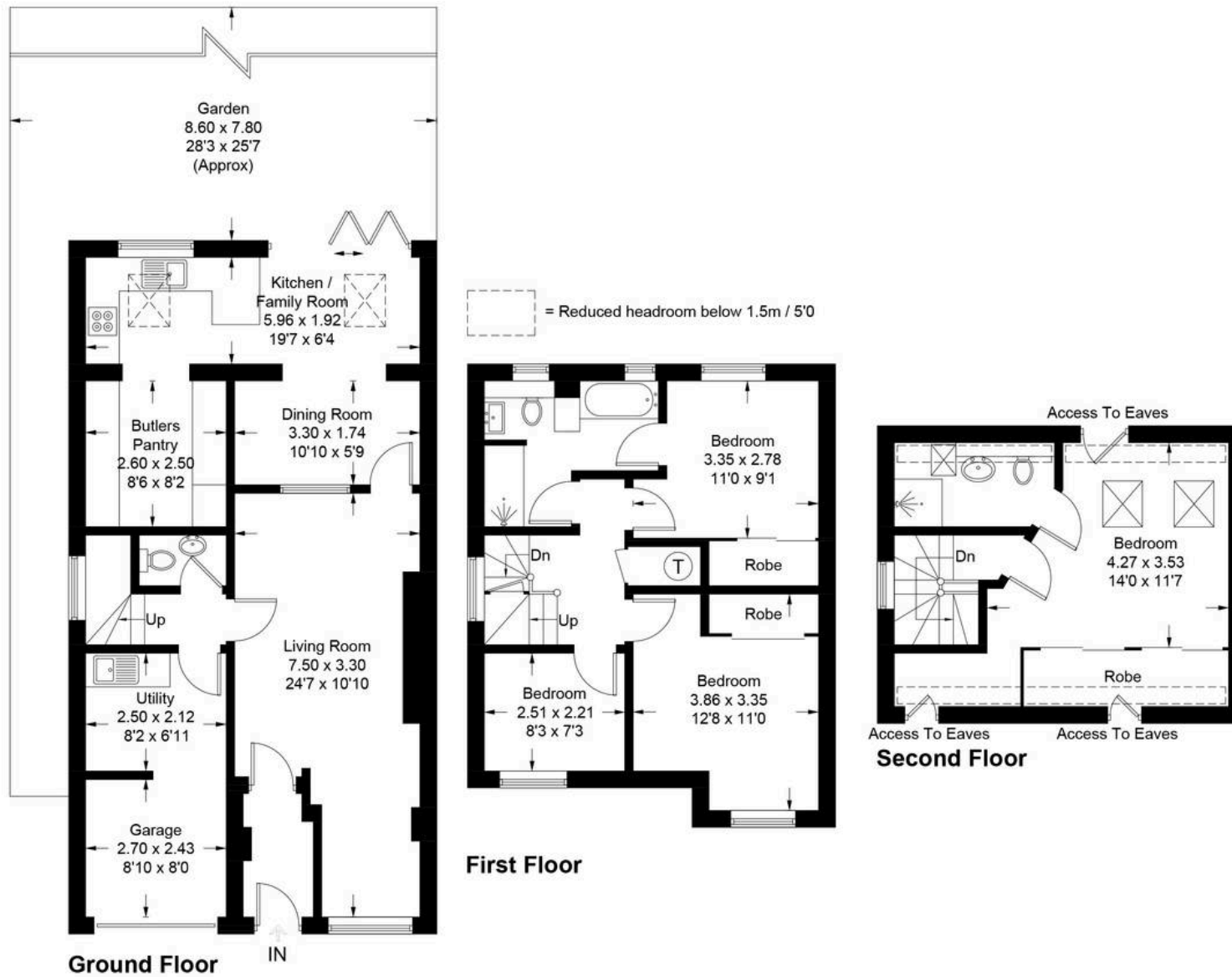


Illustration for identification purposes only, measurements are approximate,  
not to scale. Fourlabs.co © (ID1244509)





## Simpsons Witney Branch

4 Langdale Court Witney, Oxfordshire - OX28 6AD

01993 835030 • [witney@simpsonsproperty.com](mailto:witney@simpsonsproperty.com) • [www.simpsonsproperty.com/](http://www.simpsonsproperty.com/)