



52 Thurston Drive

Kettering, Northamptonshire NN15 6GN



Simpson & Partners

Simpson and Partners are pleased to offer to the rental market this four bedroom detached family home ideally situated on the popular Leisure Village.

The well presented accommodation comprises entrance hall, lounge leading to dining room with patio doors to the rear garden, modern fitted kitchen, utility room and WC. Upstairs there are four bedrooms, two doubles and two singles with fitted wardrobes and en-suite to master and family bathroom. Enclosed rear garden, single garage and off road parking.

Available end of April

EPC C

Council Tax D

No pets

£1,350 PCM



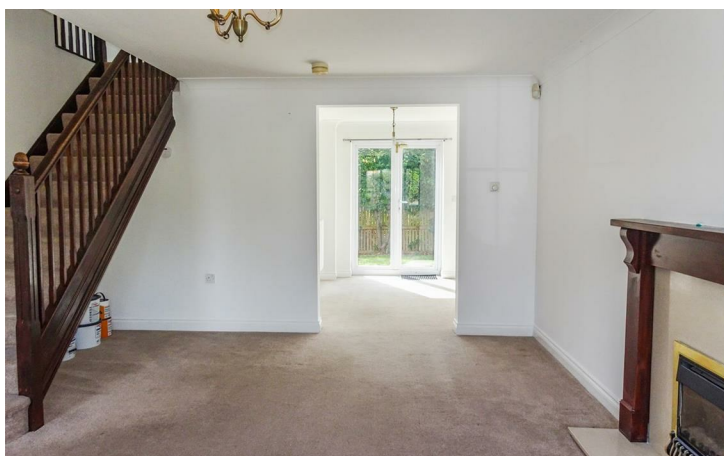
4

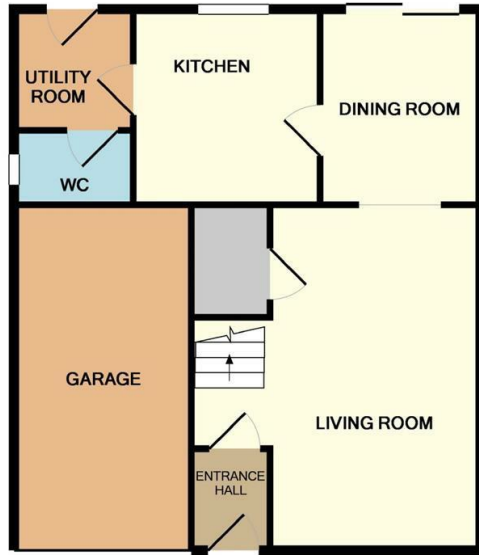


2

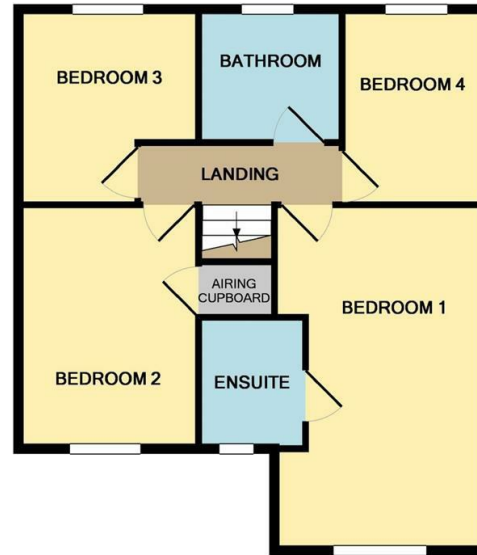


2



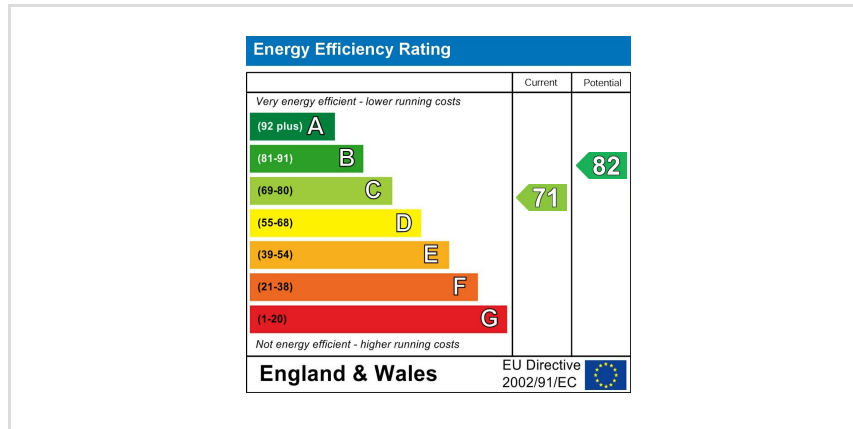


GROUND FLOOR



1ST FLOOR

Whilst every attempt has been made to ensure the accuracy of the floor plan contained here, measurements of doors, windows, rooms and any other items are approximate and no responsibility is taken for any error, omission, or mis-statement. The plan is copyright to Simpson and Partners and is for illustrative purposes and should only be used as such by any prospective purchaser. The services, systems and appliances shown have not been tested and no guarantee as to their operability can be given.
Made with Maptopia ©2019



When you buy with Simpson and Partners, you know **you'll be in safe hands**. From the moment you walk through our doors, we'll make you **feel truly welcome**. Our sales consultants and financial advisors will take you through **every step of the process**, offering **free expert advice** along the way, from help choosing the right mortgage and insurance through to finding your conveyancer. And if you need help selling your home too, **with over 20 years of local experience, you can trust us to get you moving**.



**Simpson
& Partners**

Making Every
Journey Personal



01536 518200

kettering@simpsonandpartners.co.uk

<https://www.simpsonandpartners.co.uk/>

1 Silver Street, Kettering, Northants, NN16 0BN