



Harford Street, E1

£525,000

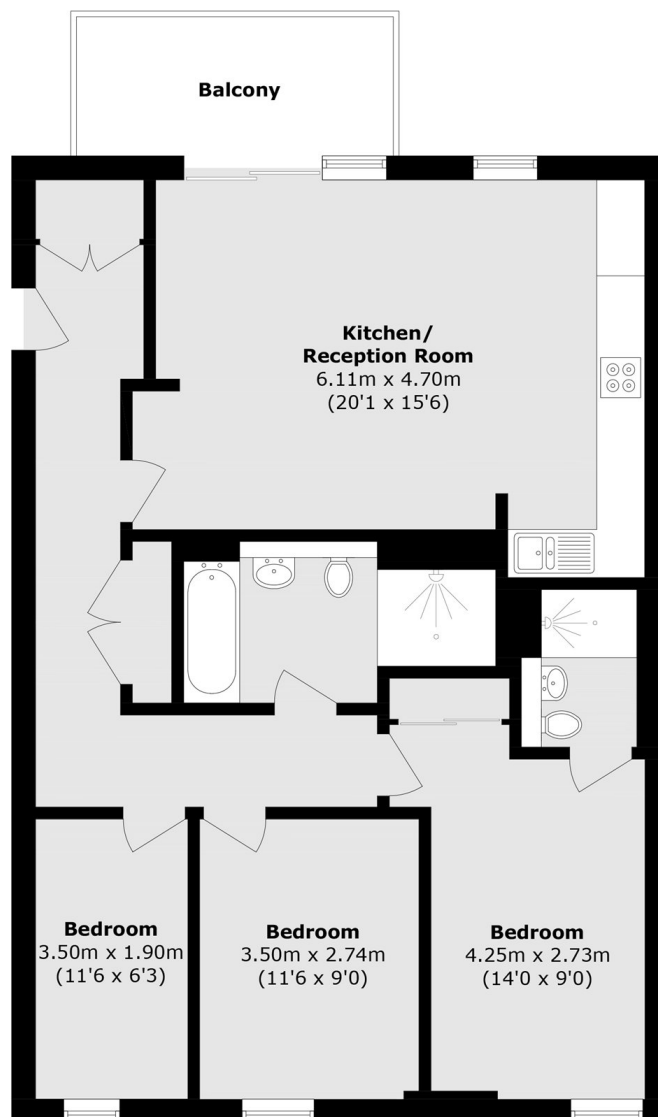
Three Bedroom apartment set within a modern building in this sought after location. The property boasts an open plan living room with a fully integrated kitchen and ample space to dine, this area leads out onto the properties private balcony with views over the landscaped communal gardens. The apartment three three well sized double bedrooms two with inbuilt storage and the principle bedroom en-suite. The corridor is home to further storage and the family bathroom.

Ideally located between three stations; Stepney Green (District and Hammersmith and City), Mile End Station (District, Hammersmith, and City and Central) and Limehouse (DLR) you have fantastic links into Canary Wharf, Central London and beyond. Whitechapel station boasts the Elizabeth Line - serving Bond Street in 10 minutes and Heathrow in 35 minutes. An abundance of open green space nearby include Mile End Park, extending to Victoria Park, the Regents Canal and River Thames path. There is also a variety of local schools, as well as a vast array of local restaurants, bars, galleries and markets creating a vibrant and versatile setting.

Features

- Three Bedrooms
- Two Bathrooms
- Modern Interiors
- Sought After Location
- Private Balcony
- Courtyard Views

Harford Street,
London, E1



Second Floor

Total area (approx.): 87.4 sq. m (940.8 sq. ft)

Balcony (approx.): 6.9 sq. m (74.3 sq. ft)