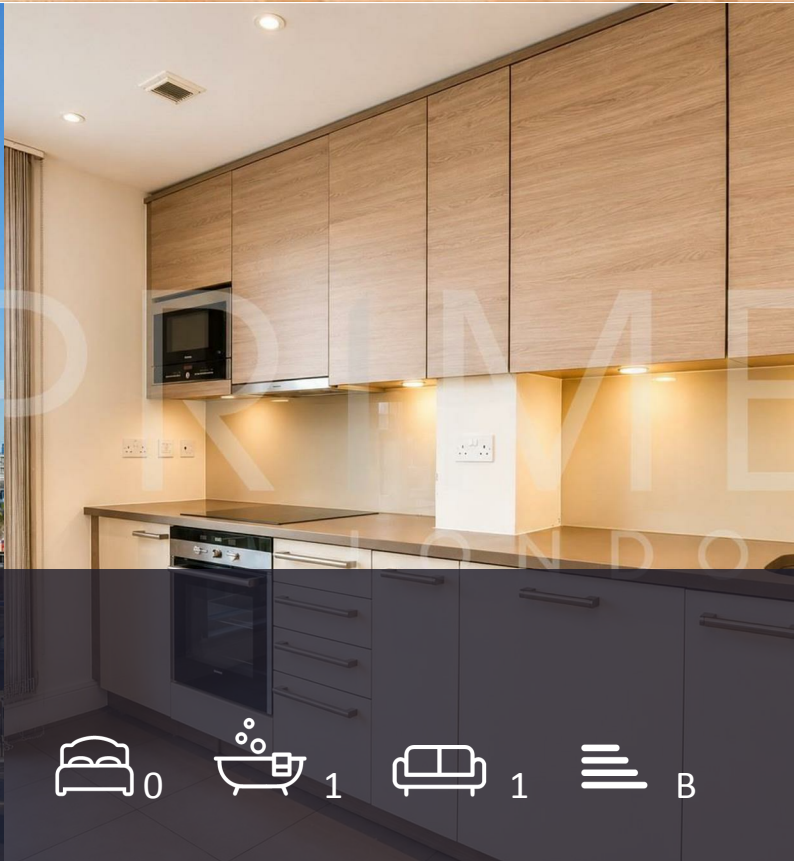




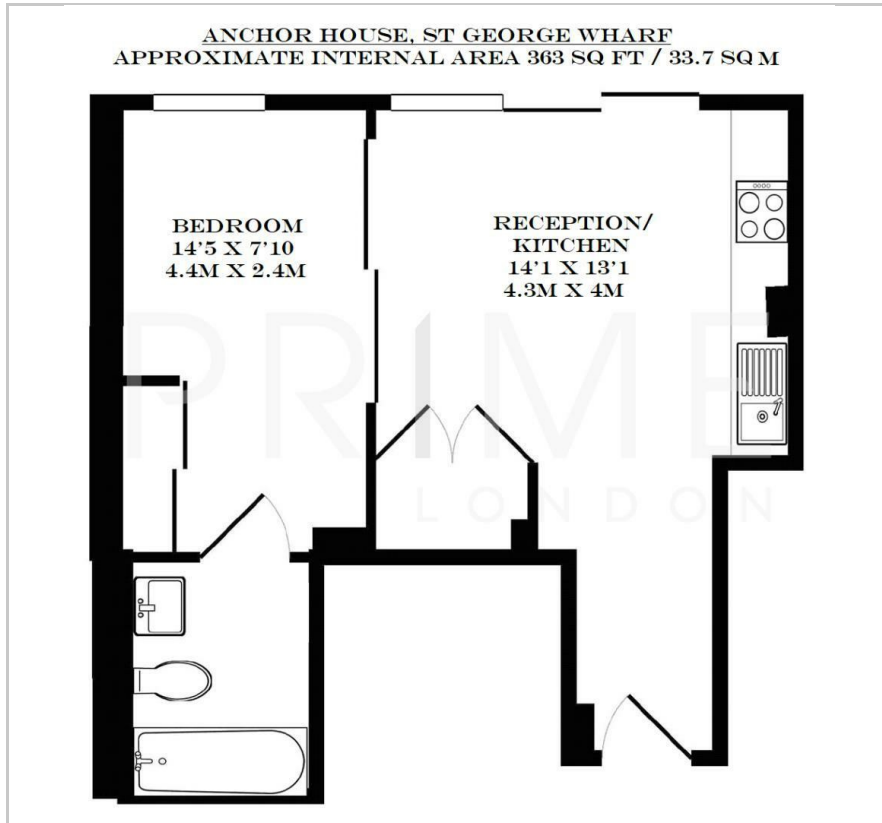
Anchor House

St George Wharf, SW8 2FH

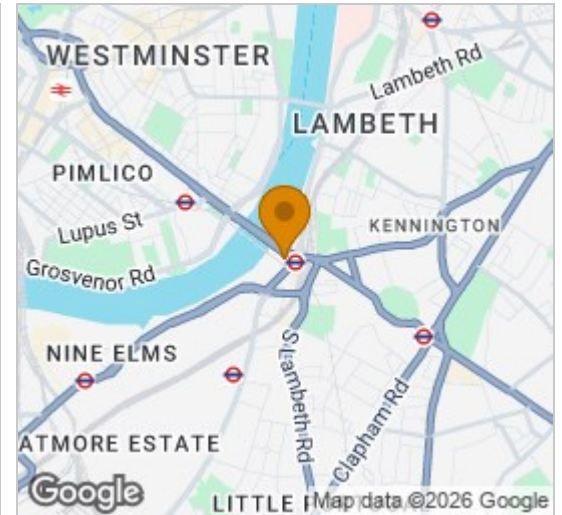
£525 Per Week



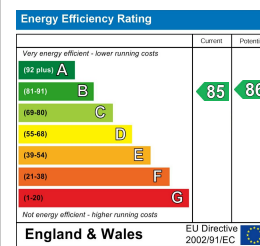
Floor Plan



Area Map



Energy Efficiency Graph



Viewing

By appointment. Contact us on 0207 928 6663 if you wish to arrange a viewing appointment for this property, or require further information.

- Manhattan Style Apartment
- Views of The Shard and The City
- Close to Vauxhall Station
- 24 hour concierge

A high specification Manhattan style one bedroom apartment offering excellent views, situated in the excellently located and well-served riverside development St George Wharf, available exclusively through Prime London.

This apartment benefits from the fantastic transport links afforded by this very well kept complex by The River Thames. St George Wharf also offers on site riverside bars and restaurants such as Waterfront London, The Riverside, Cottons, and Vine Bar, as well as direct access to Vauxhall Underground Station.

For additional convenience other on site outlets include Tesco Express, Pret a Manger, Hudson's Dry Cleaners, Riverside Medical Centre & Dental Spa and more.



These particulars, whilst believed to be accurate are set out as a general outline only for guidance and do not constitute any part of an offer or contract. Intending purchasers should not rely on them as statements of representation of fact, but must satisfy themselves by inspection or otherwise as to their accuracy. No person in this firm's employment has the authority to make or give any representation or warranty in respect of the property.