



Beaumont Crescent, W14

£765,000

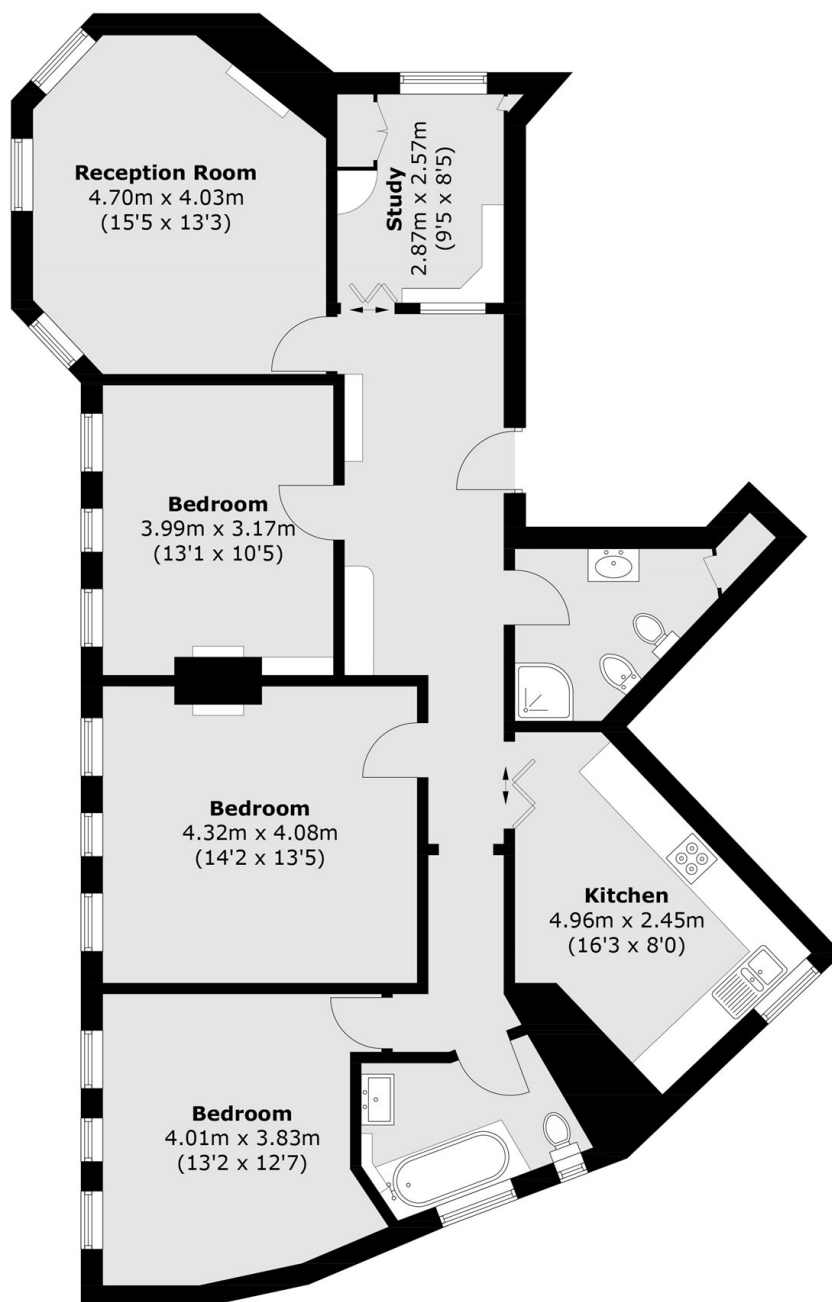
A spacious and bright four bedroom apartment situated on the top floor of an attractive period building. The property offers over 1,200 sq.ft of space, share of freehold and has no onward chain.

West Kensington Mansions is located on North End Road next to numerous local facilities and less than 200 yards to West Kensington underground station and A4 for easy access into central London.

Features

- Share Of Freehold
- Four Bedrooms
- No Chain
- Two Bathrooms
- Close To Tubes
- Popular Location

Beaumont Crescent, London, W14



Total area (approx.): 115.0 sq. m (1,237.8 sq. ft)