



THE STORY OF

Bridgefoot

Weybourne, Norfolk

SOWERBYS



THE STORY OF

Bridgefoot

Weybourne, Norfolk
NR25 7HE

Charming Brick and
Flint Coastal Cottage

Desirable Location
in Weybourne

Spacious Kitchen/
Dining/Family Room

Four Bedrooms

Bright Dual-Aspect
Sitting Room

Private Enclosed Gardens
and Courtyards

Summer House and
Mature Planting

Off-Road Parking
and Cart Shed

SOWERBYS HOLT OFFICE
01263 710777
holt@sowerbys.com

Tucked away in a peaceful position just moments from the heart of the sought-after coastal village of Weybourne, this charming brick and flint cottage offers a wonderful blend of traditional Norfolk character and versatile family living. Occupying a private setting, the property enjoys beautifully arranged accommodation, enclosed gardens and excellent parking, all within easy reach of the village amenities and stunning North Norfolk coastline.

At the heart of the home is an impressive kitchen, dining and family space, designed for modern living and everyday gathering. Whether enjoying a relaxed breakfast before heading to the beach or entertaining family and friends, this sociable room naturally becomes the hub of the home. The sitting room provides a welcoming retreat, with its dual-aspect outlook creating a bright and airy atmosphere throughout the day. A utility room adds practicality, whilst the ground floor bedroom and shower room offer flexibility for guests, multi-generational living or those seeking additional workspace.

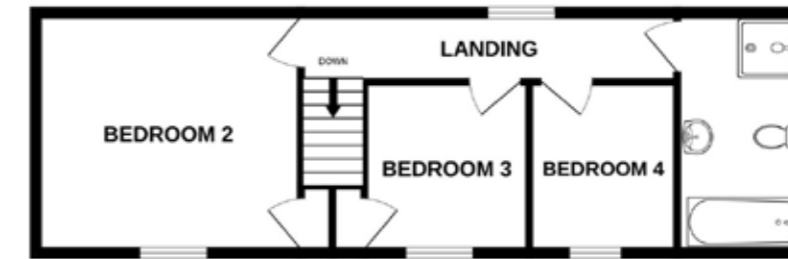
Upstairs, three further bedrooms provide comfortable accommodation, served by a family bathroom. The layout lends itself equally well as a permanent residence, coastal retreat or holiday home, offering adaptable space to suit a variety of lifestyles.

Outside, the property continues to impress. Ample off-road parking is complemented by a traditional open-fronted cart shed, whilst the gardens wrap around the cottage, creating a choice of outdoor spaces to enjoy throughout the seasons. Lawned areas, mature planting and sheltered courtyards provide pockets of privacy and colour, with plenty of space for al fresco dining, relaxing with a book or simply enjoying the peaceful surroundings. The summer house offers an additional place to unwind, whilst the fully enclosed gardens create a safe and secure environment for children and pets.

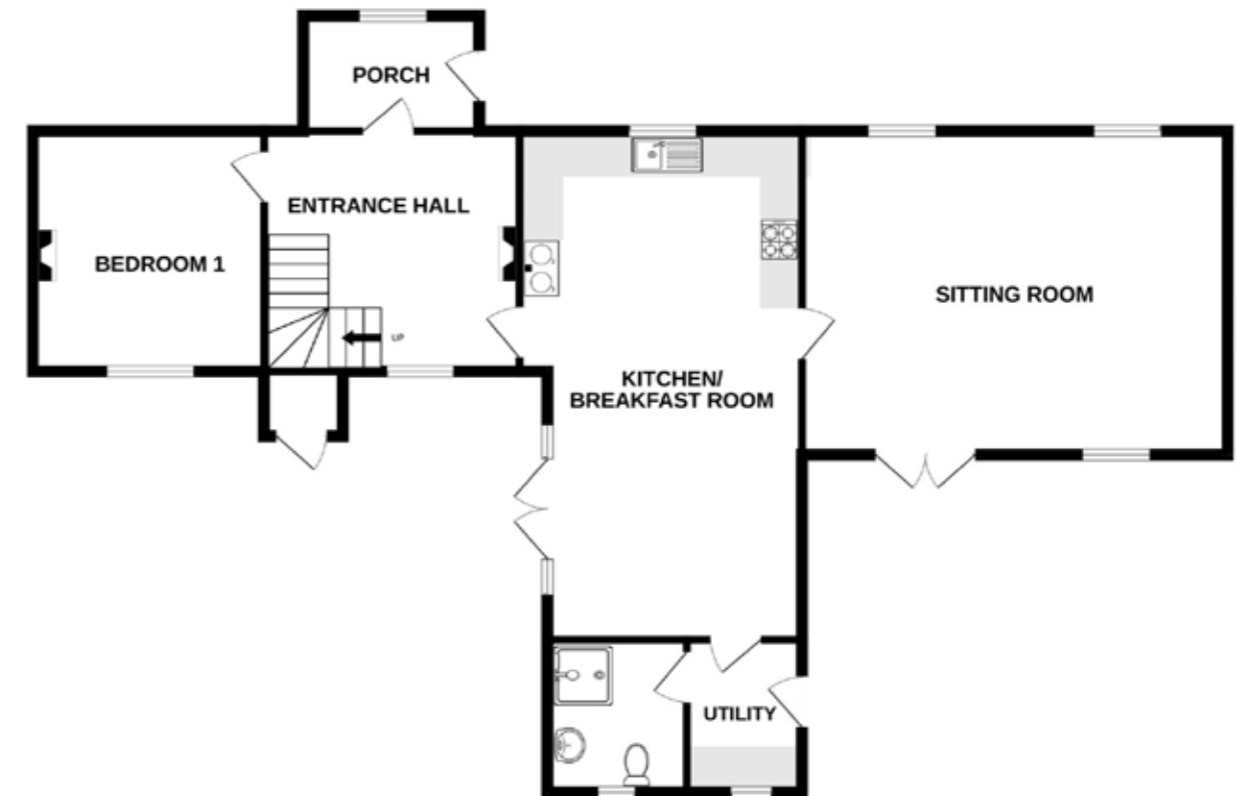


The living spaces are light-filled and sociable, designed for easy modern living and relaxed entertaining.





1ST FLOOR
448 sq.ft. (41.6 sq.m.) approx.



GROUND FLOOR
1102 sq.ft. (102.4 sq.m.) approx.



Whilst every attempt has been made to ensure the accuracy of the floor plan contained here, measurements of doors, windows, rooms and any other items are approximate and no responsibility is taken for any error, omission, or mis-statement. This plan is for illustrative purposes only and should be used as such by any prospective purchaser or tenant. The services, systems and appliances shown have not been tested and no guarantee as to their operability or efficiency can be given.

Copyright V360 Ltd 2026 | www.houseviz.com

Weybourne

WHERE HISTORY AND NATURE MEET

Just three miles west of Sheringham, Weybourne is familiar to many as a stop on The Poppy Line steam railway, which is a magnificent way to arrive at this unspoilt coastal village. You might spot pretty Weybourne Windmill as you ride the line, which local legend says once signalled to smugglers with the turn of its sails whether the coast was clear to land.

The mill was later home to Mr and Mrs Dodds who were arrested as spies during World War II, after police spotted the couple using the windmill to signal out to sea and discovered a radio transmitter. East Anglia's proximity to Europe meant it played a key role in the war effort and a secret World War II military site to the left of the village, Weybourne Camp, which was visited by Churchill is now home to the Muckleburgh Collection, one of the UK's largest privately owned displays of guns and military vehicles.

Following Station Road, turn into Church Street where the medieval All Saints Church sits, and behind it Weybourne Priory, once home to Augustine monks. Further along is The Ship Inn, a traditional village pub which has been serving locals since the 1800s. Enjoy one of its wide selection of local ales and artisan gins as you enjoy seafood freshly caught just footsteps away. If you follow Beach Lane down to the coastline, you might see the boats which fish the waters for their catch.

Take the coastal path west towards pretty Cley and Salthouse Marshes or head east back to Sheringham. Surrounded by fields, woodland and heathland in an Area of Outstanding Natural Beauty, with its village shop, tea room, many traditional cottages and period homes this is a wonderful place to call home.



Note from Sowerbys



“The gardens offer a private retreat with mature planting and sheltered spots to relax and enjoy the seasons.”



SERVICES CONNECTED

Mains water, electricity and drainage. Heating to be confirmed.

COUNCIL TAX

Band E.

ENERGY EFFICIENCY RATING

D. Ref:- 8000-2051-0122-8201-3123

To retrieve the Energy Performance Certificate for this property please visit <https://find-energy-certificate.digital.communities.gov.uk/find-a-certificate/search-by-reference-number> and enter in the reference number above. Alternatively, the full certificate can be obtained through Sowerbys.

TENURE

Freehold.

LOCATION

What3words: ///indoors.freezers.lavished

These particulars and measurements whilst believed to be accurate, are set out as a general outline only for guidance and do not constitute any part of an offer or contract. Intending purchasers should not rely on them as statements of representation of fact, but must satisfy themselves by inspection or otherwise as to their accuracy. No person in this firm's employment has the authority to make or give representation or warranty in respect of the property.

SOWERBYS

Sowerbys Estate Agents Limited is a company registered
in England and Wales, company no: 05668606.
Registered office 23 Tuesday Market Place, King's Lynn, England, PE30 1JJ

