



Levett Square, TW9

£690,000

Built by Taylor Wimpey in 2018 is this stunning, purpose built, double aspect, larger than average apartment offering 920 sq ft of accommodation. The property has a modern and contemporary styled decorative finish featuring luxury 'state of the art' interior fittings.

Levett Square is a recently built sought after residential development set within communal grounds and benefitting from a 24/7 on-site concierge service. Located within easy reach of the Thames Path, Kew Retail Park, Kew Gardens Station providing District Line and Overground services and the local village shopping amenities.

Features

- Two Double Bedrooms
- Open Plan Fitted Kitchen
- Two Bathrooms
- Walk-In Wardrobe
- 24/7 Concierge
- Underground Parking



Levett Square, TW9

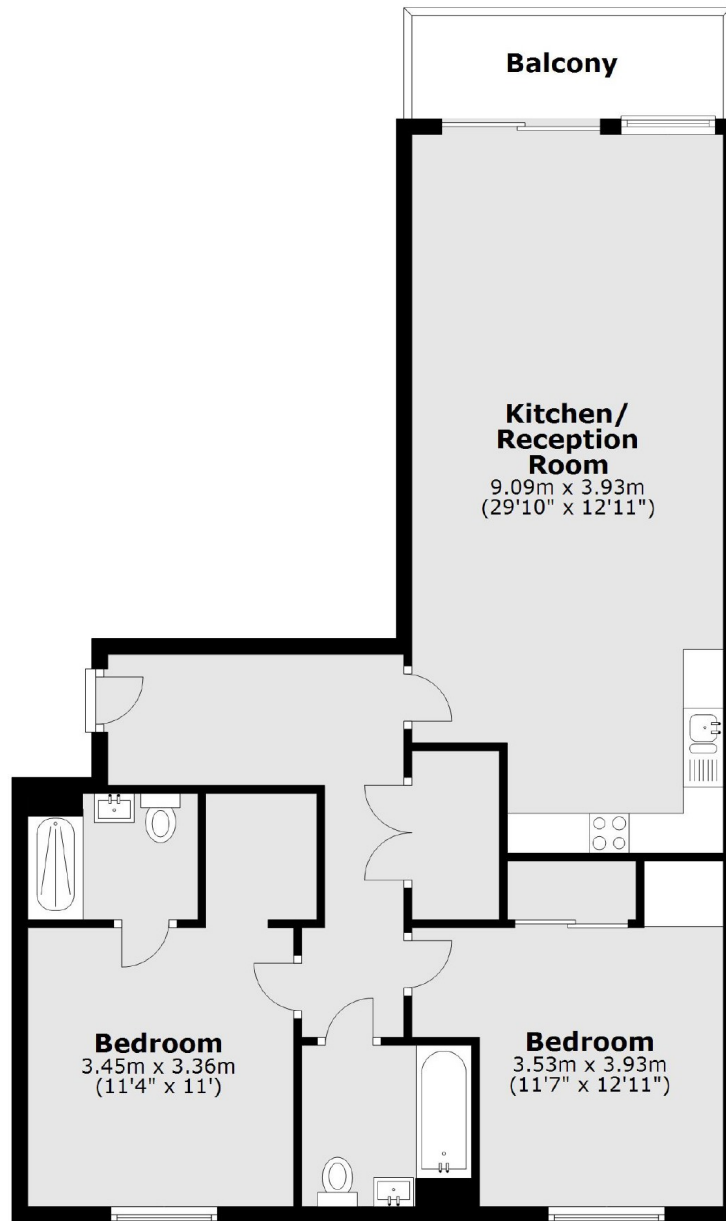
The property is entered via a communal entrance hall with secure entry phone system and provides lift and staircase access to the fourth floor communal landing with door into the property.

The accommodation has wooden floors throughout and consists of a large entrance hall with double door storage, a very spacious and light reception room with sliding doors leading to a private balcony, an open plan fully fitted modern kitchen, a master double bedroom with a contemporary styled ensuite bathroom room and walk-in wardrobe, a second double bedroom with built in wardrobes and home office desk, and a modern family bathroom.

The property benefits from double glazing throughout, integrated ventilation and heat recovery system, secure residents bicycle storage and an underground allocated parking space with electrical charging point.



Levett Square, Kew, TW9



Main area: Approx. 85.5 sq. metres (920.4 sq. feet)
Plus balconies, approx. 5.5 sq. metres (59.4 sq. feet)

Dexters

Richmond
1 Sheen Road
Richmond
TW9 1AD

Sales
020 8288 9988

Energy Rating: B. We aim to make our particulars both accurate and reliable. However they are not guaranteed; nor do they form part of an offer or contract. If you require clarification on any points then please contact us, especially if you're traveling some distance to view. Please note that appliances and heating systems have not been tested and therefore no warranties can be given as to their good working order.

 **RICS** | Regulated
Estate Agent
and Letting Agent

dexters.co.uk