



## Avenue Elmers, KT6

£425,000

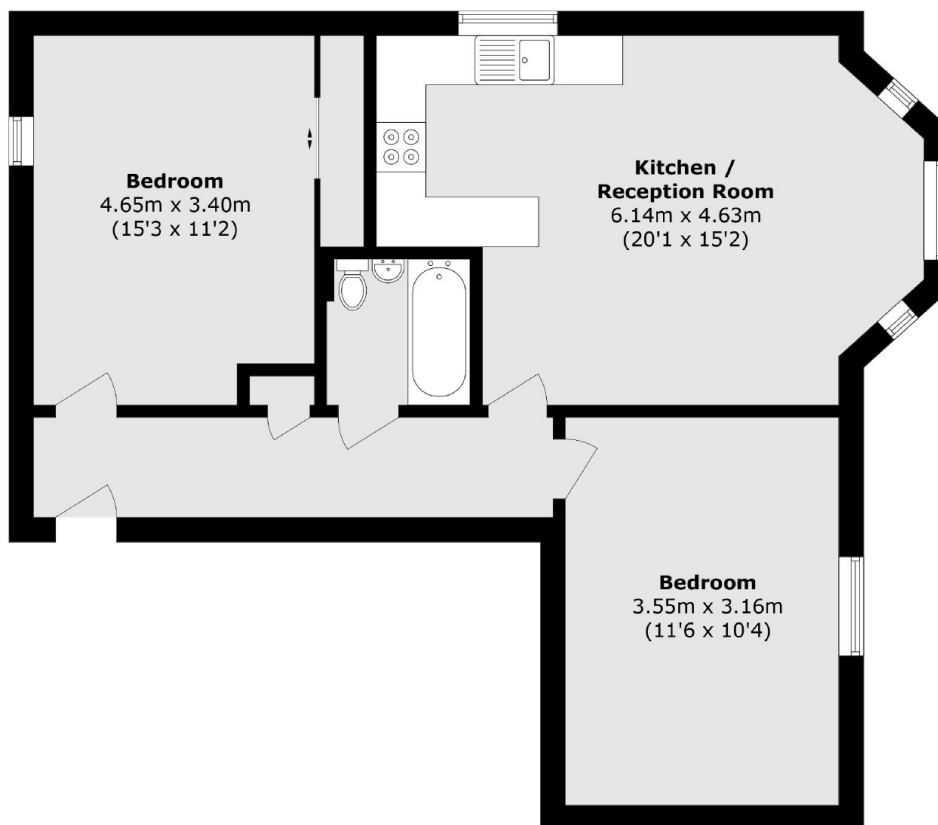
A bright and spacious apartment in a central Surbiton location a few hundred metres from the high street. This fantastic flat has two double bedrooms, a bathroom, off-street parking for residents and communal gardens.

Avenue Elmers is approximately half a mile away from everything you need, including the River Thames, the desirable Maple Road, Surbiton high street and the mainline train station.

### Features

- Two Bedrooms
- One Bathroom
- Great Condiiton
- Off-Street Parking
- Central Location
- Communal Gardens

# Avenue Elmers, Surbiton, KT6



Total area (approx.): 71.2 sq. m (766.4 sq. ft)