



Connells

Westminster Road
Cannock



Ground Floor

Porch

Kitchen

Being a fitted kitchen with a range of wall, base and drawer units with laminate work surfaces over and having a sink/drainage, space for American fridge/freezer, plumbing for the washing machine, space for appliances, extractor hood, tiled splash-backs, space for dining furniture, two ceiling light point, tiled flooring, double glazed window to the rear aspect, stairs to first floor and doors to the front porch, living room and side porch for access to the hallway

Hallway

Having a radiator, ceiling light point, storage cupboard, tiled flooring and doors to the guest WC and rear garden

W.C

Having a WC, ceiling light point and tiled flooring

Living Room

Having a double glazed window to the front aspect, radiator, two ceiling light point, fireplace, carpeted flooring and double glazed doors to the rear garden

Side Porch

Having a double glazed front entrance door, doors to kitchen and hallway



First Floor

Landing

Having carpeted flooring, ceiling light point and having doors to bedrooms and family bathroom

Bedroom 1

Having a double glazed window to the front aspect, radiator, ceiling light point, carpeted flooring and doors to en-suite

En-Suite

Having a ceiling light point, WC, wash hand basin and shower cubicle

Bedroom 2

Having a double glazed window to the rear aspect, radiator, ceiling light point, carpeted flooring and door to en-suite

En-Suite

Having a double glazed window to the front aspect, ceiling light point, WC, wash hand basin and shower cubicle

Bedroom 3

Having a double glazed window to the front aspect, radiator, ceiling light point and carpeted flooring

Bedroom 4

Having a double glazed window to the rear aspect, radiator, ceiling light point and carpeted flooring

Bathroom

Having a double glazed window to the rear aspect, ceiling light point, WC, wash hand basin, bath with shower over, part tiled walls and tiled flooring

Outside

Front

Having a brick paved driveway suitable for multiple vehicles

Rear

Having paved patio area, laid to lawn, raised flower bed and variety of shrubs

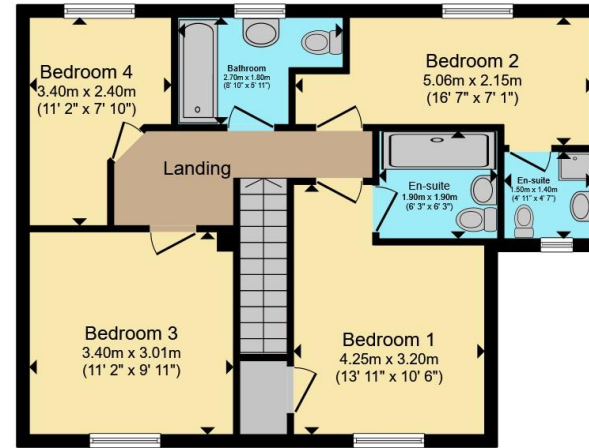








Ground Floor



First Floor

Total floor area 126.2 m² (1,358 sq.ft.) approx

This floor plan is for illustrative purposes only. It is not drawn to scale. Any measurements, floor areas (including any total floor area), openings and orientation are approximate. No details are guaranteed, they cannot be relied upon for any purpose and they do not form part of any agreement. No liability is taken for any error, omission or misstatement. A party must rely upon its own inspection(s). Powered by www.propertybox.io



To view this property please contact Connells on

T 01543 500923
E cannock@connells.co.uk

10-12 Wolverhampton Road
 CANNOCK WS11 1AH

EPC Rating: C Council Tax Band: B

Tenure: Freehold

view this property online connells.co.uk/Property/CNK108391



1. MONEY LAUNDERING REGULATIONS Intending purchasers will be asked to produce identification documentation at a later stage and we would ask for your co-operation in order that there will be no delay in agreeing the sale. 2. These particulars do not constitute part or all of an offer or contract. 3. The measurements indicated are supplied for guidance only and as such must be considered incorrect. Potential buyers are advised to recheck measurements before committing to any expense. 4. We have not tested any apparatus, equipment, fixtures, fittings or services and it is in the buyers interest to check the working condition of any appliances.

Connells Residential is registered in England and Wales under company number 1489613, Registered Office is Cumbria House, 16-20 Hockliffe Street, Leighton Buzzard, Bedfordshire, LU7 1GN. VAT Registration Number is 500 2481 05.

See all our properties at www.connells.co.uk | www.rightmove.co.uk | www.zoopla.co.uk

Property Ref: CNK108391 - 0002