



LB

LB

Loporto Browne

— RESIDENTIAL —

Ivy Road, NW2

Guide Price £1,050,000

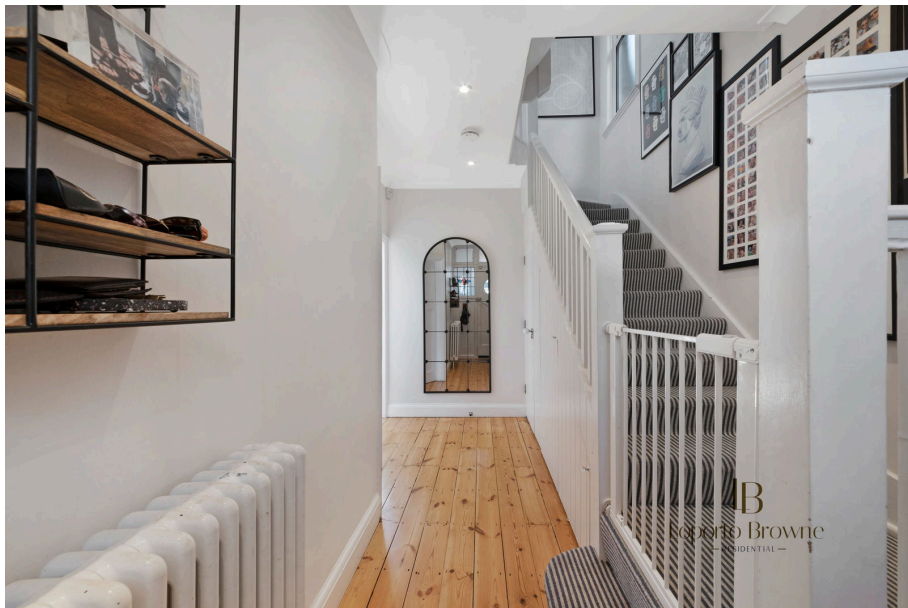
🛏️ 4 🚿 2 🛋️ 2

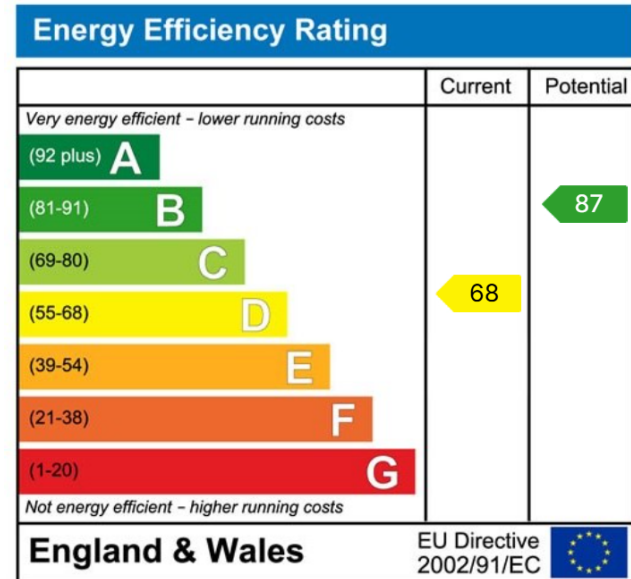
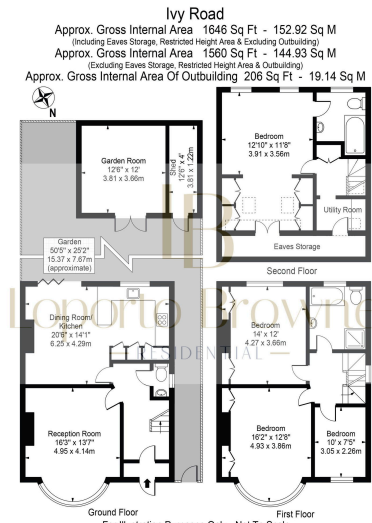
- Guide Price: £1,050,000 to £1,150,000
- Four bedrooms, two bathrooms plus guest WC
- Bay-fronted reception with original pine floors and shutters
- South-facing 16m garden with terrace, lawn & garden house/man cave
- Air conditioning on multiple levels
- Beautifully presented semi-detached Art Deco family home
- Extended across three levels with full-width dormer
- Open-plan kitchen/dining/family room with bifold doors
- Ergonomic kitchen with granite worktops, AEG appliances & American Fridge Freezer
- Top floor principal suite with en suite, 3m ceilings & Velux windows



Guide Price: £1,050,000 to £1,150,000

This beautifully presented four-bedroom, two-bathroom semi-detached Art Deco home spans three levels and has been thoughtfully extended and updated to create the perfect family house. Blending original character with modern upgrades, the property offers generous proportions, a full-width dormer, and a spectacular south-facing garden with a garden house/man cave – an ideal retreat or play space.





LB Residential
 Grand Union Studios
 332 Ladbroke Grove
 W10 5AD

Email: hello@lbresidential.co.uk
 Web: www.lbresidential.co.uk
 Tel: 0203 062 6262