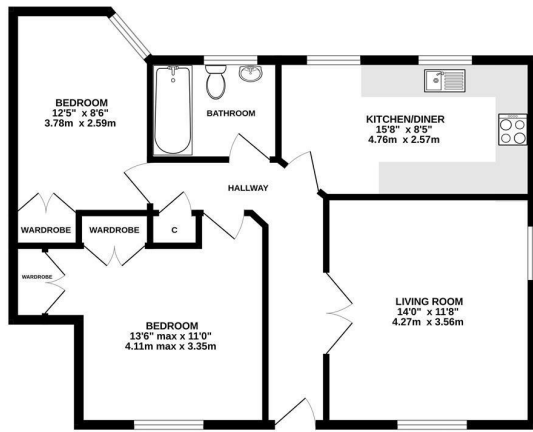




**Keith  
Ashton**

Tabors Court, Shenfield  
Brentwood

GROUND FLOOR  
712 sq.ft. (66.1 sq.m.) approx.



TOTAL FLOOR AREA: 712 sq.ft. (66.1 sq.m.) approx.  
Measurements are approximate. Not to scale. Not for planning purposes only.  
Made with NetScout 2022

£325,000



## I Tabors Court, Shenfield, Brentwood, CM15 8JF

We are delighted to bring to market this well-presented ground-floor maisonette, ideally situated within an attractive residential development just half a mile from Shenfield Station, offering excellent transport links into London and beyond.

Offered with No Onward Chain, the property boasts spacious and well-maintained accommodation throughout, comprising a bright dual-aspect lounge, a well-appointed kitchen, two bedrooms with built-in wardrobes, and a modern family bathroom. Externally, the property is set within well-maintained communal gardens and further benefits from two allocated parking spaces.

Conveniently located within easy reach of Shenfield's vibrant High Street, with its excellent selection of shops, restaurants, cafés, and bars, this appealing home combines comfort, convenience, and connectivity.

Energy Efficiency Rating		Environmental Impact (CO <sub>2</sub> ) Rating	
Current	Potential	Current	Potential
Very energy efficient - lower running costs		Very environmentally friendly - lower CO <sub>2</sub> emissions	
(82 plus) <b>A</b>		(82 plus) <b>A</b>	
(61-81) <b>B</b>		(61-81) <b>B</b>	
(49-60) <b>C</b>	75	(49-60) <b>C</b>	
(35-48) <b>D</b>		(35-48) <b>D</b>	
(29-34) <b>E</b>		(29-34) <b>E</b>	
(21-28) <b>F</b>		(21-28) <b>F</b>	
(1-20) <b>G</b>		(1-20) <b>G</b>	
Not energy efficient - higher running costs		Not environmentally friendly - higher CO <sub>2</sub> emissions	
EU Directive 2002/91/EC		EU Directive 2002/91/EC	
England & Wales		England & Wales	

### SERVICES:

Local Authority: Brentwood  
Council tax band: D  
Post code: CM15 8JF

### VIEWING:

Strictly by prior arrangement with Keith Ashton Estate Agents

### OPENING HOURS:

Monday to Friday: 8.45AM - 6.30PM | Saturdays: 9AM - 5.30PM | Sundays: 10AM - 2PM

### MORTGAGE INFORMATION:

We offer the additional facility of an in-house Independent Financial Adviser who will access all mortgage lenders with the purpose of providing you with the benefit of choice. For quotations or comparables please call 01277 260858 or visit our interactive website at [www.mortgagebusiness.net](http://www.mortgagebusiness.net)



We the Agent have not tested any apparatus, fittings or services for this property. The plot size is intended merely as a guide and has not been officially measured or verified by the Agent. Photographs are for illustration only and may depict items which are not for sale or included in the sale of the property. As part of the service we offer we may recommend ancillary services to you which we believe may help you with your property transaction. We wish to make you aware, that should you decide to use these services we will receive a referral fee. For full and detailed information please visit 'terms and conditions' on our website [www.keithashton.co.uk](http://www.keithashton.co.uk)

Brentwood  
Tel. 01277 260858

Village Office  
Tel. 01277 375757

Lettings Office  
Tel. 01277 202200

Explore more @ [www.keithashton.co.uk](http://www.keithashton.co.uk)

