



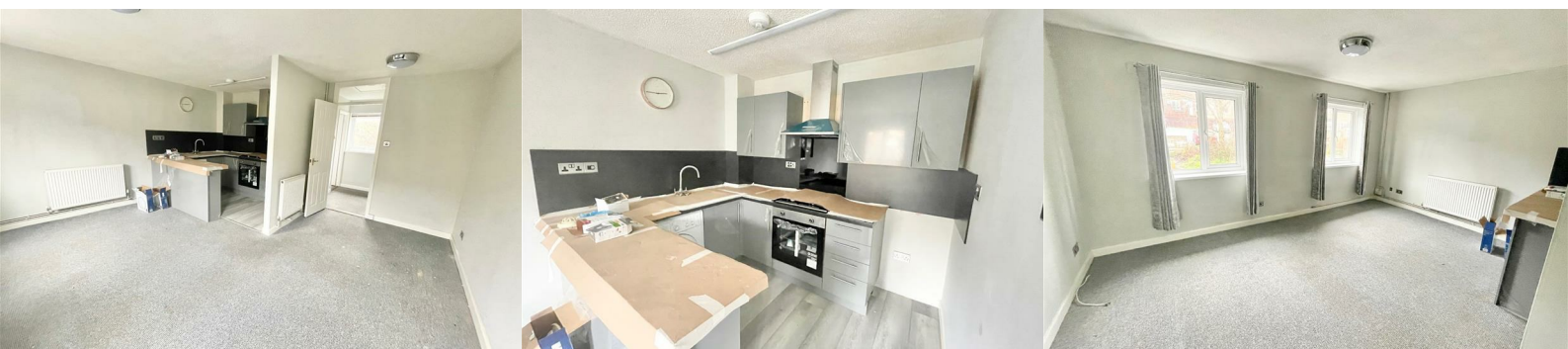
45 Canterbury Drive

, Plymouth, PL5 4HH

£895 Per Calendar Month



Available from early April is this modern property. It is available on a long term basis. Accommodation includes two bedrooms, a modern bathroom and open plan living area. There is outside space and allocated parking.



CANTERBURY DRIVE, PLYMOUTH, PL5 4HH

ACCOMMODATION

Access to the property is gained via a part double-glazed entrance door leading into the entrance hall.

ENTRANCE HALL

Stairs rising to the first floor accommodation.

LANDING

Loft hatch. Built-in cupboard housing the gas boiler. Doors providing access to the accommodation.

OPEN-PLAN LIVING/KITCHEN AREA 16'0" x 15'6" (4.89 x 4.74)

Within the lounge area, there are 2 double-glazed windows to the rear elevation. In the kitchen area there is a series of matching eye-level and base units with rolled-edge work surfaces. Inset single drainer sink unit with mixer tap. 4-ring gas hob. Electric oven. Space for a three-quarter height fridge-freezer. Space and plumbing for a washing machine.

BEDROOM ONE 11'5" x 9'4" (3.50 x 2.87)

Double-glazed window to the rear elevation.

BEDROOM TWO 10'7" x 6'2" (3.25 x 1.90)

Double-glazed window to the front elevation. Built-in storage cupboard.

BATHROOM 8'1" x 6'6" (2.48 x 1.99)

White modern suite comprising a bath with a shower screen and a shower unit with spray attachment over, pedestal wash basin and a low level toilet. Vertical towel rail/radiator. Obscured double-glazed window to the front elevation.

OUTSIDE

At the side of the property there is a patio garden area enclosed by natural hedging.

COUNCIL TAX

Plymouth City Council

Council tax band A

Rental holding deposit

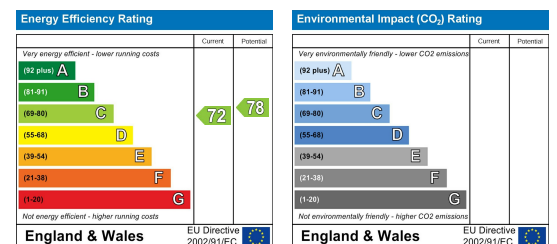
The agent may require a holding deposit equivalent to a week's rent in order to secure the property. This amount would then be deducted from the 1st month's rent.

Area Map



Floor Plans

Energy Efficiency Graph



These particulars, whilst believed to be accurate are set out as a general outline only for guidance and do not constitute any part of an offer or contract. Intending purchasers should not rely on them as statements of representation of fact, but must satisfy themselves by inspection or otherwise as to their accuracy. No person in this firm's employment has the authority to make or give any representation or warranty in respect of the property.