



New Park Road, SW2

£2,500 Per calendar month

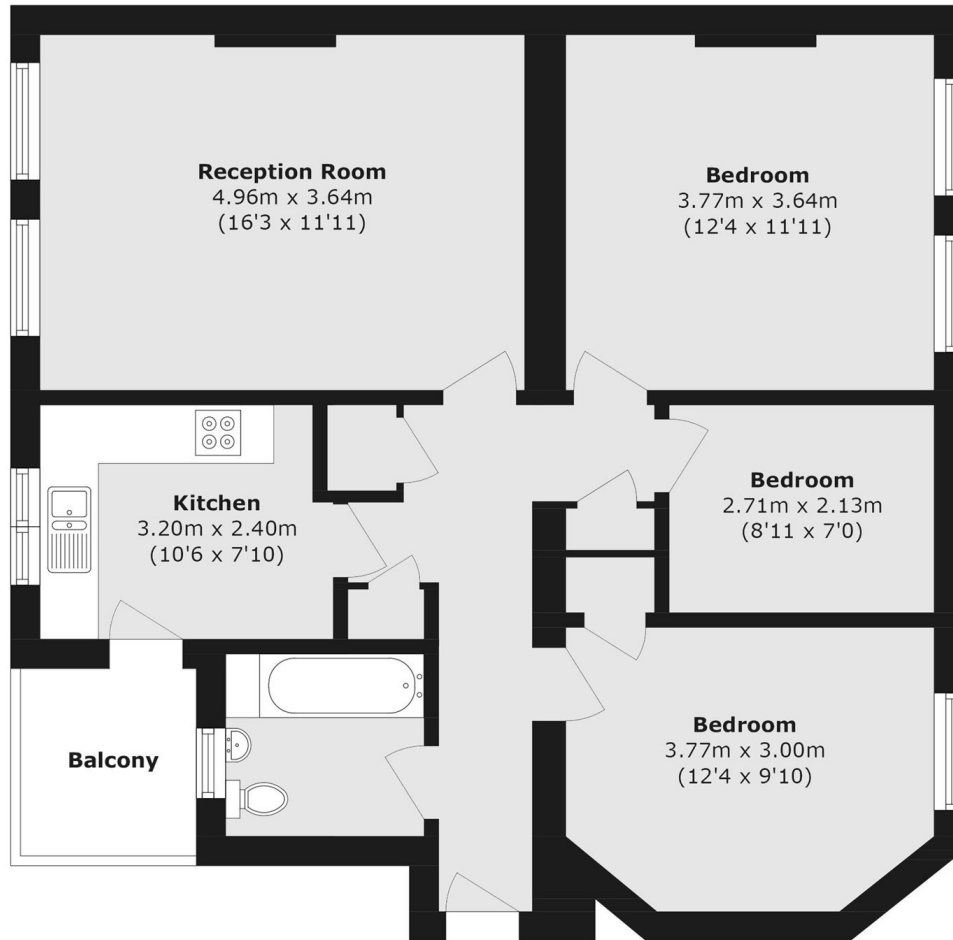
This spacious purpose-built, three bedroom flat has been finished to a good standard throughout. The property features a generous reception room, a separate kitchen, bathroom and wooden flooring throughout. Along with a private balcony.

Within close proximity to Brockwell Park, Tooting Bec Common and Clapham Common. Providing access to bus routes into Brixton Village and the City, with pubs and local shops on your doorstep. You are in an enviable location.

Features

- Three Double Bedrooms
- Raised Ground Floor
- Spacious Reception Room
- Separate Kitchen
- Wooden Flooring
- Private Balcony

New Park Road, London, SW2



Raised Ground Floor

Total area (approx.): 74.4 sq. m (800.8 sq. ft)

Balcony area (approx.): 3.7 sq. m (39.8 sq. ft)