



Priory Street, Newport Pagnell, MK16 9AF

welcome to

Priory Street, Newport Pagnell

Situated on the ever-popular PRIORY STREET in the heart of Newport Pagnell, this delightful two/three-bedroom SEMI-DETACHED home offers a rare opportunity to own a piece of local history. Formerly a SCHOOL HOUSE dating back to the 1800s, the property beautifully blends period character.

Entrance Hall

Door to the front, under stairs storage and stairs to the first floor. Doors to the lounge, dining room and study/third bedroom.

Lounge

Feature fireplace, TV point, radiator, carpet and double-glazed window to the front.

Dining Room

Feature Fireplace, carpet, radiator and double-glazed French doors leading out to the garden.

Study/Third Bedroom

Radiator and 2 double-glazed windows to the rear.

Kitchen

Fitted with a mix of wall and base units with work top over, sink with drainer, eye-level electric oven and a gas hob with extractor fan over. Space for a washing machine. Tiled floor and double-glazed windows to the front and side.

Utility Room

Tiled floor, radiator and double-glazed window to the side. Double-glazed doors on both sides leading out to the garden.

First Floor Landing

Stairs from the ground floor. Door to both bedrooms and the family bathroom.

Bedroom One

Walk in wardrobe and double fitted cupboard to the side, feature fireplace and radiator. Double -glazed window to the front.

Bedroom Two

Carpet, feature fireplace, radiator and double-glazed window to the rear.

Bathroom

Wash hand basin, low-level WC and a bath with a shower over. Fireplace, radiator and vinyl flooring. Double-glazed obscured window to the rear.

Outside Garage & Parking

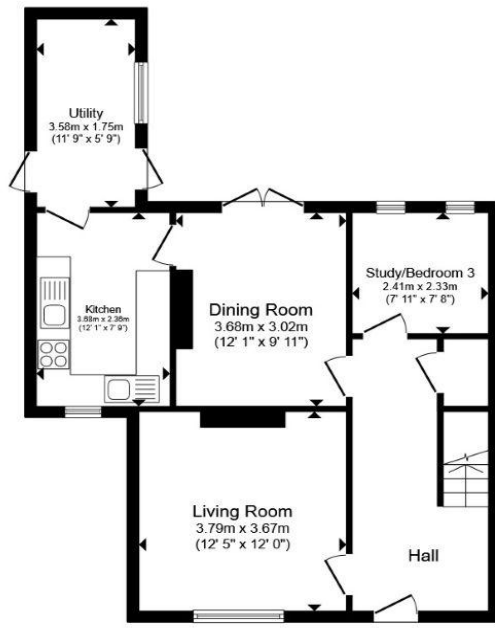
Garage with up & over door. Parking in front of the garage.

Front Garden

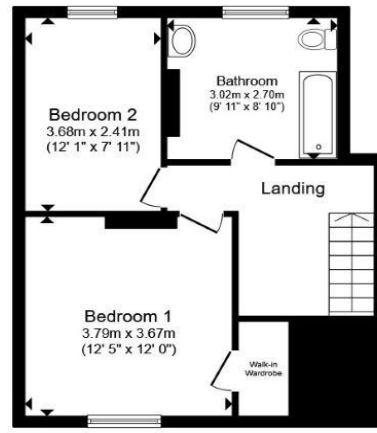
Enclosed by metal railings the garden is mainly laid to lawn with a path leading to the front door.

Rear Garden

Enclosed by fencing the garden is mainly laid to lawn small tree and mature shrub borders. The garden wraps around the side of the property.



Ground Floor



First Floor

Total floor area 104.8 m² (1,128 sq.ft.) approx

This floor plan is for illustrative purposes only. It is not drawn to scale. Any measurements, floor areas (including any total floor area), openings and orientation are approximate. No details are guaranteed, they cannot be relied upon for any purpose and they do not form part of any agreement. No liability is taken for any error, omission or misstatement. A party must rely upon its own inspection(s). Powered by www.propertybox.io



welcome to
Priory Street,
Newport Pagnell

- FORMER SCHOOL HOUSE DATING BACK TO THE 1800'S
- TWO WELL-PROPORTIONED BEDROOMS
- STUDY/BEDROOM THREE
- ORIGINAL PERIOD FEATURES
- PRIVATE REAR GARDEN

Tenure: Freehold EPC Rating: D
Council Tax Band: F

£360,000



view this property online [brownandmerry.co.uk/Property/NPL108102](https://www.brownandmerry.co.uk/Property/NPL108102)



Property Ref:
NPL108102 - 0012

1. MONEY LAUNDERING REGULATIONS Intending purchasers will be asked to produce identification documentation at a later stage and we would ask for your co-operation in order that there is no delay in agreeing the sale. 2. These particulars do not constitute part or all of an offer or contract. 3. The measurements indicated are supplied for guidance only and as such must be considered incorrect. Potential buyers are advised to recheck measurements before committing to any expense. 4. We have not tested any apparatus, equipment, fixtures or services and it is in the buyers interest to check the working condition of any appliances. 5. Where an EPC, or a Home Report (Scotland only) is held for this property, it is available for inspection at the branch by appointment. If you require a printed version of a Home Report, you will need to pay a reasonable production charge reflecting printing and other costs. 6. We are not able to offer an opinion either written or verbal on the content of these reports and this must be obtained from your legal representative. 7. Whilst we take care in preparing these reports, a buyer should ensure that his/her legal representative confirms as soon as possible all matters relating to title including the extent and boundaries of the property and other important matters before exchange of contracts.

Brown & Merry is a trading name of Sequence (UK) Limited which is registered in England and Wales under company number 4268443, Registered Office is Cumbria House, 16-20 Hockliffe Street, Leighton Buzzard, Bedfordshire, LU7 1GN. VAT Registration Number is 500 2481 05.


brown & merry



01908 611242



newportpagnell@brownandmerry.co.uk



74A High Street, Newport Pagnell, MILTON
KEYNES, Buckinghamshire, MK16 8AQ



[brownandmerry.co.uk](https://www.brownandmerry.co.uk)