



FLOWERS CLOSE, NW2

£325,000

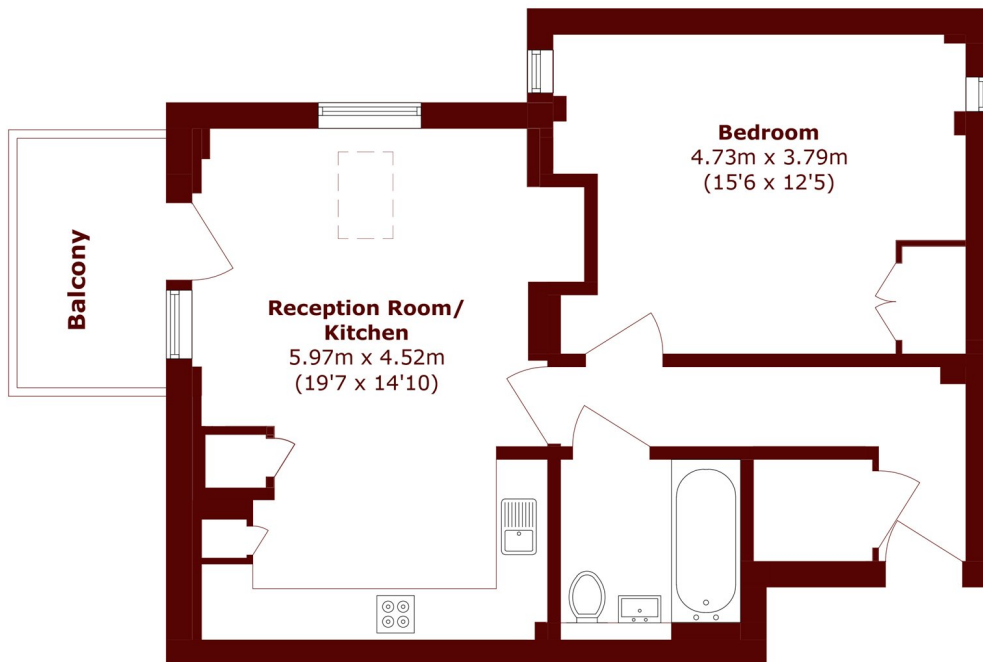
Bright one-bedroom apartment featuring an open-plan kitchen and living area with access to a private balcony.

Set within a quiet residential building, the property also benefits from a

One bedroom
Private balcony
Open plan living

Quiet, residential block
Communal terrace
Close to Gladstone Park

STEP INSIDE FLOWERS CLOSE



Total area (approx.): 56.7 sq. m (610.3 sq. ft)

Balcony area (approx.): 5.0 sq. m (53.8 sq. ft)

Willesden Green
020 8451 0420

Energy Rating: B We aim to make our particulars both accurate and reliable. However, they are not guaranteed; nor do they form part of an offer or contract. If you require clarification on any points then please contact us, especially if you're traveling some distance to view. Please note that appliances and heating systems have not been tested and therefore no warranties can be given as to their good working order

**MARSH &
PARSONS**