

Wheatmoor Road, Sutton Coldfield, B75 7JS

£270,000

🛏️ 2 🚿 1 🚗 1



Why this house is Chosen...

This well presented two-bedroom terraced house offers modern living in a highly sought-after residential area. Finished to a high standard throughout and benefitting from no upward chain the property is perfectly suited for first-time buyers, small families, professionals or investors.



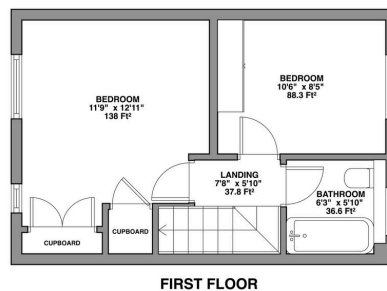
0121 222 1180
team@chosenhome.com
chosenhome.com

Chosen Home Limited
3 The Courtyard, Coleshill Manor, Coleshill, B46 1DL

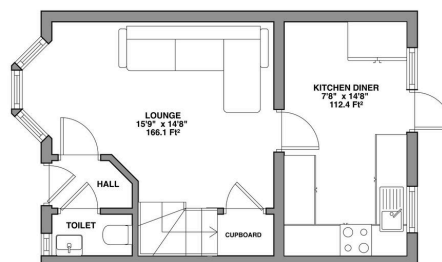


Key Features

- Two well-proportioned bedrooms
- Spacious living area
- Allocated parking space
- Convenient access to local shops, parks and transport links
- No Chain
- Modern family bathroom and additional downstairs guest toilet
- Private rear garden
- Close to Good Hope Hospital and highly regarded local schools
- Gas central heating and double glazing



FIRST FLOOR



GROUND FLOOR

APPROXIMATE GROSS INTERNAL AREA: 630.8 Ft²

(ILLUSTRATION FOR IDENTIFICATION ONLY. SIZES & DIMENSIONS ARE APPROXIMATE, NOT TO SCALE)



0121 222 1180
team@chosenhome.com
chosenhome.com

Chosen Home Limited
3 The Courtyard, Coleshill Manor, Coleshill, B46 1DL

