



**11 Godayn Grove, Maidenhead SL6 6FT**

**welcome to**

**11 Godayn Grove, Maidenhead**

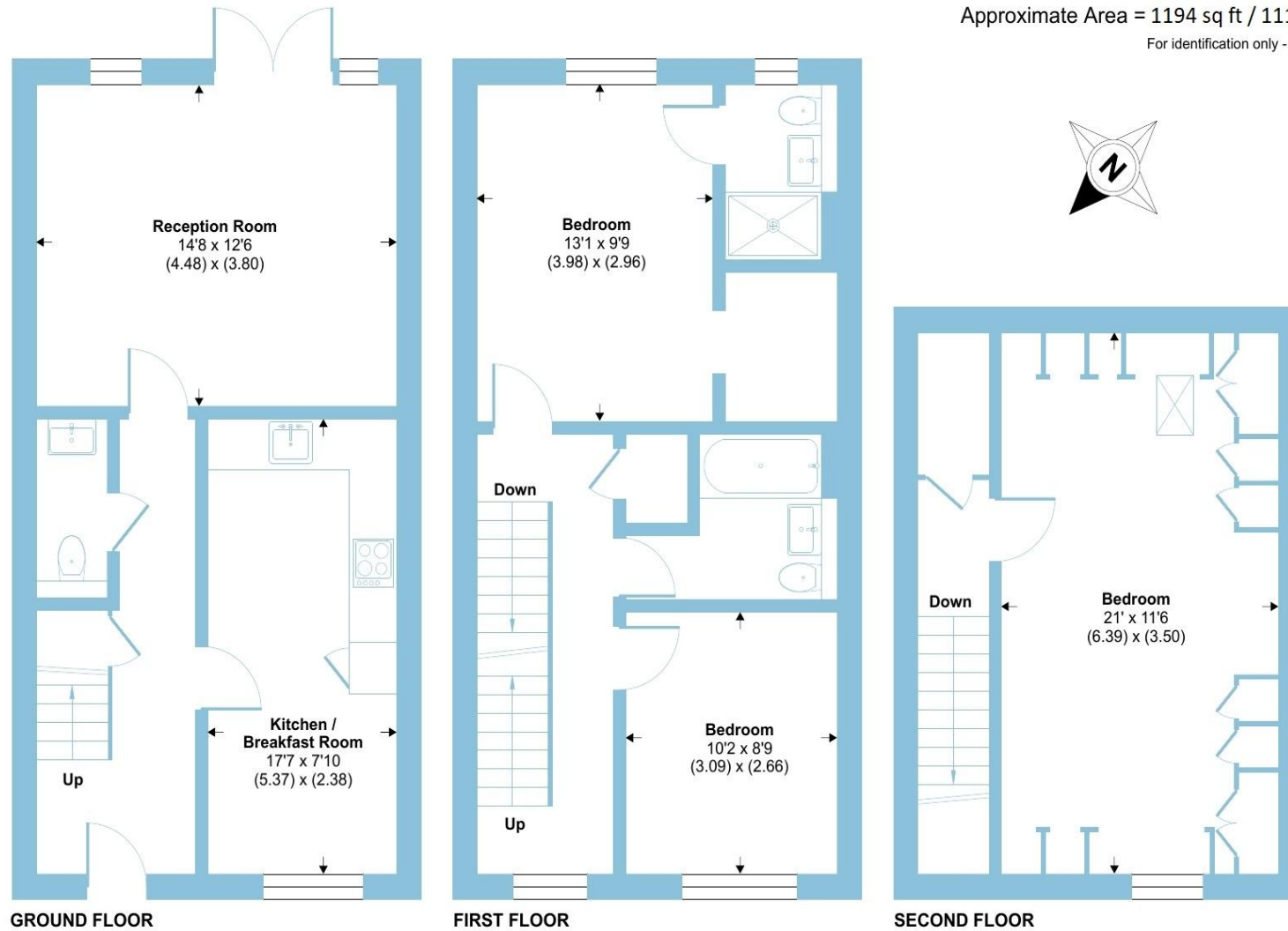
Discover the perfect blend of modern comfort, elegant design, and family-friendly living in this beautifully presented three-bedroom semi-detached home, tucked away in the desirable and peaceful Godayn Grove - one of Maidenhead's best-kept residential secrets!



# Godayn Grove, Maidenhead, SL6

Approximate Area = 1194 sq ft / 111 sq m

For identification only - Not to scale



From the moment you arrive, Godayn Grove impresses with its handsome contemporary façade, smart driveway, and a sense of warmth that continues throughout every inch of this delightful property.

The bright and airy entrance hall sets the tone for what's to come - a home designed with space, flow, and style in mind. The open-plan living and dining area is bathed in natural light, creating a wonderful environment for entertaining, relaxing, or enjoying family time. Large patio doors open onto the beautifully landscaped rear garden, seamlessly blending indoor and outdoor living.

At the heart of the home sits a stunning modern kitchen, complete with sleek cabinetry, integrated appliances, and ample worktop space - perfect for the keen home chef or anyone who loves hosting.

Upstairs, you'll find three well-proportioned bedrooms, including a spacious principal bedroom with elegant décor and excellent storage. The family bathroom has been finished to a high standard, combining style with everyday practicality.

The private rear garden offers a tranquil haven - thoughtfully designed for both low maintenance and maximum enjoyment. Whether it's a summer barbecue, a spot of morning yoga, or a peaceful coffee in the sunshine, this garden has you covered.

Perfectly placed for Maidenhead town centre, the River Thames, and the Elizabeth Line (Crossrail), this address combines the tranquillity of suburban living with unbeatable commuter convenience.

Floor plan produced in accordance with RICS Property Measurement 2nd Edition, Incorporating International Property Measurement Standards (IPMS2 Residential). © nchecom 2025. Produced for Barnard Marcus. REF: 1370318



welcome to

## 11 Godayn Grove, Maidenhead

- QUIET CUL-DE-SAC POSITION OFFERING PEACE & PRIVACY
- EXCELLENT LOCAL SCHOOLS, PARKS & SHOPS WITHIN EASY REACH
- 8 YEARS GUARANTEE
- PRIVATE REAR GARDEN
- ALLOCATED PARKING
- THREE WELL PROPORTIONED BEDROOMS
- MODERN FAMILY BATHROOM & EN-SUITE
- STUNNING MODERN KITCHEN
- DOWNSTAIRS W.C.

Tenure: Freehold EPC Rating: B

Council Tax Band: E

guide price

**£620,000**



Please note the marker reflects the postcode not the actual property

check out more properties at [rogerplatt.co.uk](http://rogerplatt.co.uk)



Property Ref:  
MHD122910 - 0004

1. MONEY LAUNDERING REGULATIONS Intending purchasers will be asked to produce identification documentation at a later stage and we would ask for your co-operation in order that there is no delay in agreeing the sale. 2. These particulars do not constitute part or all of an offer or contract. 3. The measurements indicated are supplied for guidance only and as such must be considered incorrect. Potential buyers are advised to recheck measurements before committing to any expense. 4. We have not tested any apparatus, equipment, fixtures or services and it is in the buyers interest to check the working condition of any appliances. 5. Where an EPC, or a Home Report (Scotland only) is held for this property, it is available for inspection at the branch by appointment. If you require a printed version of a Home Report, you will need to pay a reasonable production charge reflecting printing and other costs. 6. We are not able to offer an opinion either written or verbal on the content of these reports and this must be obtained from your legal representative. 7. Whilst we take care in preparing these reports, a buyer should ensure that his/her legal representative confirms as soon as possible all matters relating to title including the extent and boundaries of the property and other important matters before exchange of contracts.

Roger Platt is a trading name of Sequence (UK) Limited which is registered in England and Wales under company number 4268443, Registered Office is Cumbria House, 16-20 Hockliffe Street, Leighton Buzzard, Bedfordshire, LU7 1GN. VAT Registration Number is 500 2481 05.

  
roger platt



**01628 773333**



Maidenhead@rogerplatt.co.uk



25-29 Queen Street, MAIDENHEAD, Berkshire,  
SL6 1NB



**rogerplatt.co.uk**