



**Connells**

Swift Road  
Southampton



## Property Description

Situated on the popular Swift Road in Woolston, this stunning three-bedroom home offers stylish and modern living throughout.

The property features a beautifully presented kitchen with a central island, perfect for both everyday use and entertaining, alongside a welcoming dining area. The spacious lounge benefits from elegant bay windows, creating a bright and comfortable living space.

A contemporary family bathroom is finished to a high standard and includes a practical utility area for a washing machine and tumble dryer.

Upstairs, there are three well-proportioned bedrooms, ideal for families or flexible living.

Externally, the home boasts a well-maintained and tidy garden, complete with a fantastic summer house that includes a bedroom area - perfect for guests or additional space.

This is a truly impressive property, and viewing is highly recommended.

## Lounge

Double glazed bay window to front aspect. Gas central heating radiator.

## Dining Room

Double glazed window to side aspect. Double glazed french doors. Sky light. Gas central heating radiator.

## Kitchen

Wall and base units. Electric cooker. Induction hob. Island. Extractor fan. Gas central heating radiator.

## Bedroom 1

Double glazed window to front aspect. Built in wardrobe. Gas central heating radiator.

## Bedroom 2

Double glazed window to rear aspect. Gas central heating radiator.

## Bedroom 3

Double glazed window to rear aspect. Gas central heating radiator.

## Bathroom

WC. Wash hand basin. Bath with shower. Shower screen. Heated towel rail. Extractor fan. Space for washing machine / dryer.

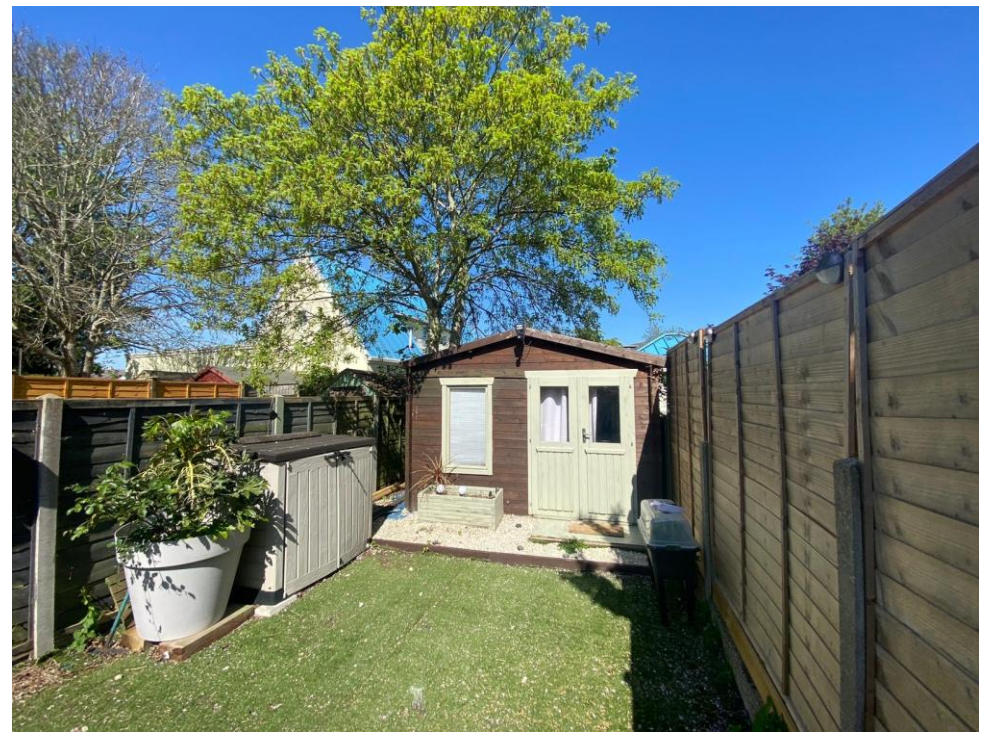
## Outside

Large grass area. Pond. Summer house with bedroom.

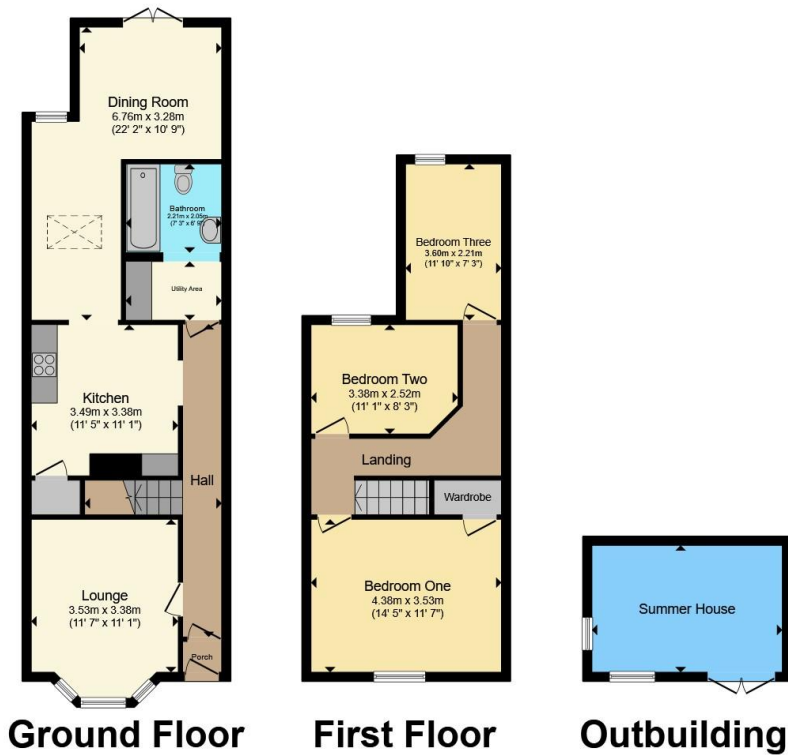
## KEY FEATURES

- Three well-proportioned bedrooms
- Stunning, modern interior throughout
- Contemporary kitchen with central island
- Bright and spacious lounge with bay windows
- Stylish family bathroom
- Dedicated utility area
- Well-maintained rear garden
- Versatile summer house with bedroom space









This floor plan is for illustrative purposes only. It is not drawn to scale. Any measurements, floor areas (including any total floor area), openings and orientation are approximate. No details are guaranteed, they cannot be relied upon for any purpose and they do not form part of any agreement. No liability is taken for any error, omission or misstatement. A party must rely upon its own inspection(s). Powered by [www.propertybox.io](http://www.propertybox.io)

**Connells**

To view this property please contact Connells on

**T 02380 422080**  
**E [Bitterne@connells.co.uk](mailto:Bitterne@connells.co.uk)**

2 West End Road Bitterne  
 SOUTHAMPTON SO18 6TG

EPC Rating: C Council Tax  
 Band: C

Tenure: Freehold

**view this property online [connells.co.uk/Property/BTN107825](http://connells.co.uk/Property/BTN107825)**



1. MONEY LAUNDERING REGULATIONS Intending purchasers will be asked to produce identification documentation at a later stage and we would ask for your co-operation in order that there will be no delay in agreeing the sale. 2. These particulars do not constitute part or all of an offer or contract. 3. The measurements indicated are supplied for guidance only and as such must be considered incorrect. Potential buyers are advised to recheck measurements before committing to any expense. 4. We have not tested any apparatus, equipment, fixtures, fittings or services and it is in the buyers interest to check the working condition of any appliances.

Connells Residential is registered in England and Wales under company number 1489613, Registered Office is Cumbria House, 16-20 Hockliffe Street, Leighton Buzzard, Bedfordshire, LU7 1GN. VAT Registration Number is 500 2481 05.

**See all our properties at [www.connells.co.uk](http://www.connells.co.uk) | [www.rightmove.co.uk](http://www.rightmove.co.uk) | [www.zoopla.co.uk](http://www.zoopla.co.uk)**

Property Ref: BTN107825 - 0002