



Beaumont Crescent, W14

£4,500 Per calendar month

This 115 sq meter four bedroom apartment on the top floor of a red brick mansion block offers a blend of original features and a modern feel throughout. With a separate eat-in kitchen, two bathrooms, and ample storage space, this property is ideal for professional sharers or a family.

West Kensington Mansions is a well maintained development offering close proximity to a number of transport options, North End Road offers numerous bus routes.

Features

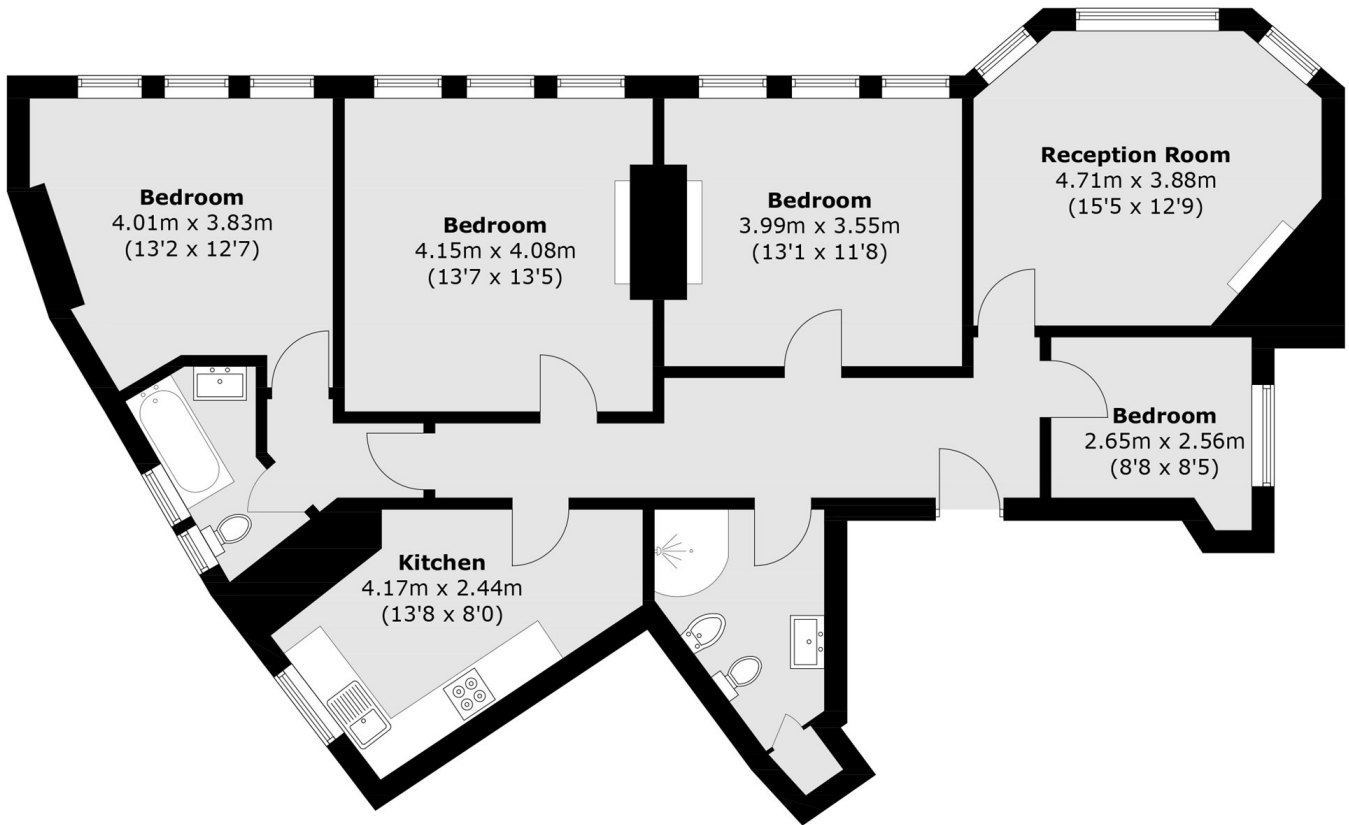
- Four Bedrooms
- Two Bathrooms
- Period Features
- 115 Sq Meter
- Top Floor
- Plenty of Natural Light



Beaumont Crescent, W14



Beaumont Crescent, London, W14



Third Floor

Total area (approx.): 107.7 sq. m (1,159.3 sq. ft)