



## Westbourne Road, TW13

### £470,000

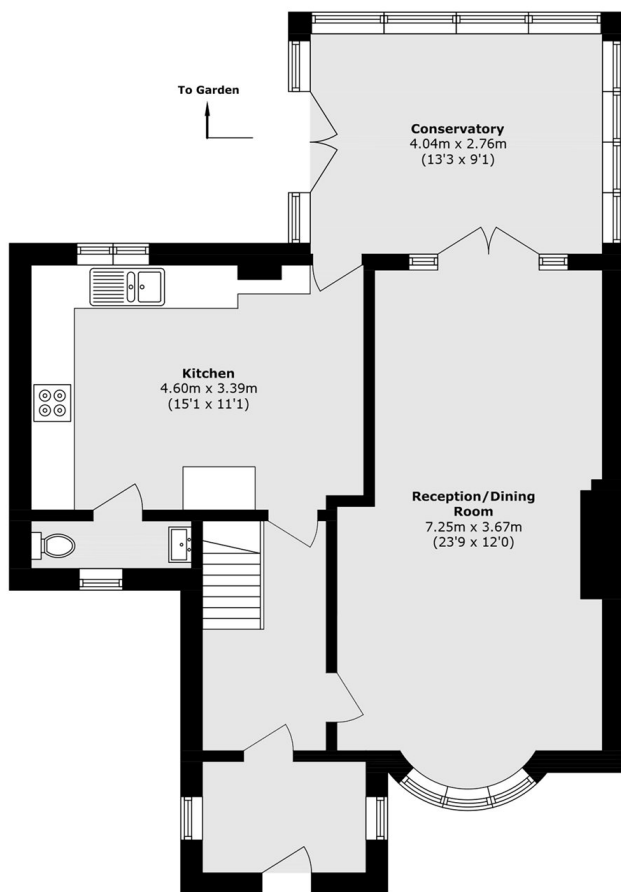
Offered with no onward chain is this four bedroom semi detached house. This would make perfect home for a family offering ample living space, south facing garden and off street parking.

Westbourne Road is great for a commuter needing the A316. With local shops, Feltham Station and many convenient bus routes, this property isn't going to be around for long!

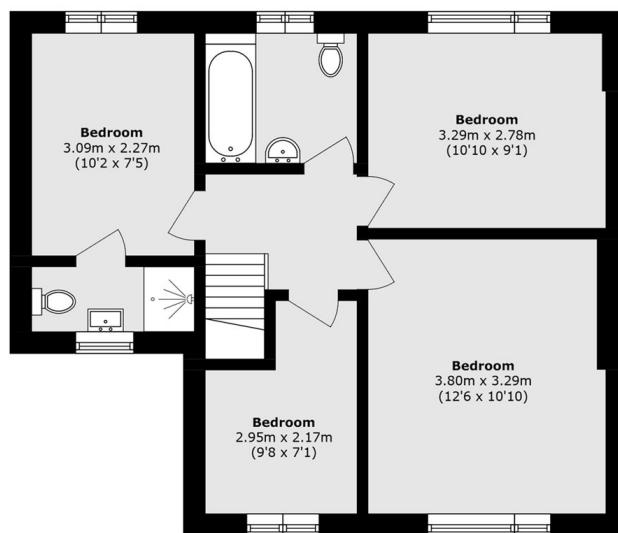
### Features

- Four Bedrooms
- Semi-Detached
- Off-Street Parking
- No Onward Chain
- South Facing Garden
- Scope To Extend (STPP)

# Westbourne Road, Feltham, TW13



**Ground Floor**



**First Floor**

Total area (approx.): 111.3 sq. m (1198.0 sq. ft)