



BEAUFORT GREEN

Beryl Road, W6

£1,450,000



An architecturally designed four double bedroom home, finished to an exceptional standard throughout.

The heart of the property is a stunning open-plan kitchen and living space featuring beautiful exposed brickwork and floor-to-ceiling doors that open directly onto a generous patio perfect for indoor and outdoor living and entertaining. The south-facing garden ensures the home is flooded with natural light throughout the day.

The ground floor also benefits from a separate reception room, a practical utility room, a guest W.C., and extensive bespoke joinery providing stylish and functional storage.

Across the first and second floors are four well-proportioned double bedrooms, all with built-in storage. Two modern bathrooms serve the upper levels, offering comfort and convenience for family living.

A thoughtfully designed home combining contemporary style with excellent functionality.





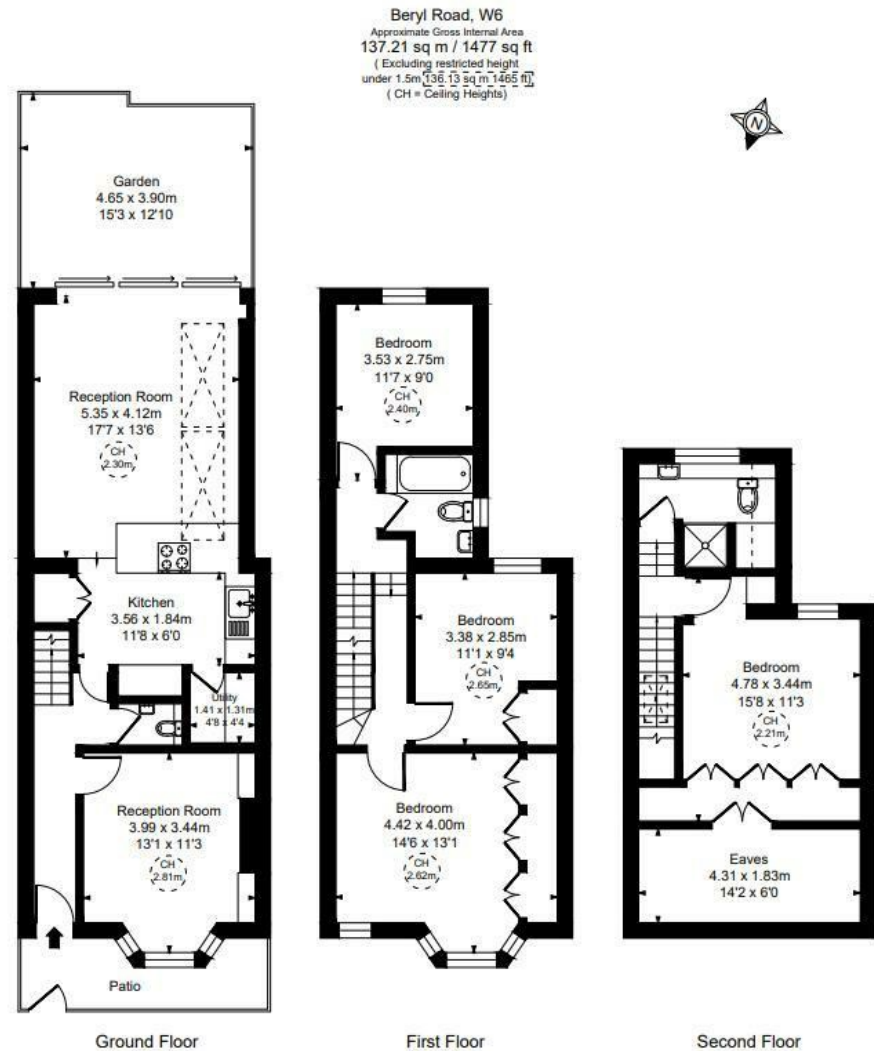
BEAUFORT GREEN



BEAUFORT GREEN

At a Glance.

- Beautifully Finished Throughout
- Exceptional Ground Floor Extension
- South Facing Garden
- Quiet Residential Street
- Four Bedroom Freehold House
- Seperate Living Room



BEAUFORT GREEN

02074594100

charlie@beaufortgreen.co.uk

263 New Kings Road
London
SW16 1DB