

Bridgewater Avenue, SW6

£738 Per week

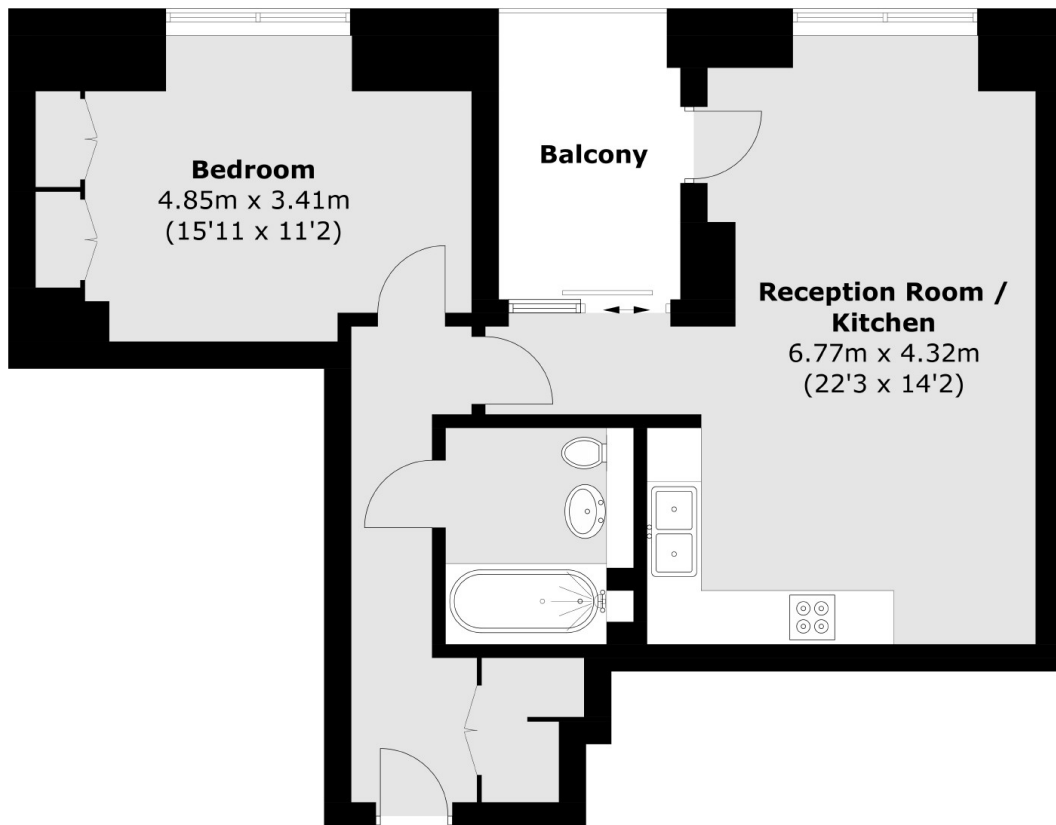
A modern new one double bedroom apartment finished to a very high specification, located in the prestigious Chelsea Creek development.

Chelsea Creek is ideally located for the local amenities of Imperial Wharf while there is a wide range of shops, bars and boutiques available on King's Road.

Features

- One Double Bedrooms
- Gym And Pool Access
- Brand New
- Private Balcony
- 24 Hour Concierge
- Imperial Wharf Station

Bridgewater Avenue, London, SW6



Total area (approx.): 59.9 sq. m (644.7 sq. ft)
Balcony area (approx.): 6.3 sq. m (67.8 sq. ft)