



2 Dennings Mews Wigginton Road YO31 8BD

£1,800 Per Month

3



3



1



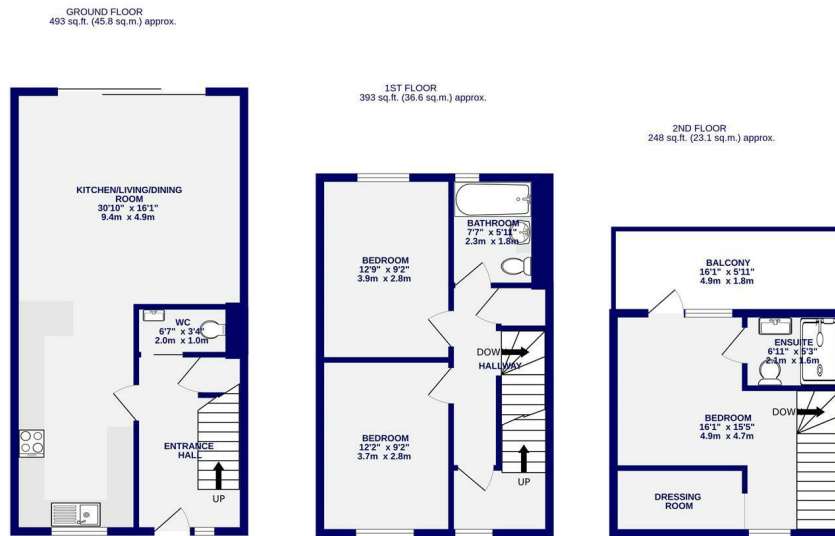
B



Stunning brand new three bedroom mid townhouse located only minutes walk from the hospital and city centre with south facing garden, one designated parking space, Air Source Heat Pump heating system, security alarm.

Comprising entrance hall with store cupboard with plumbing for washer (can be supplied), WC, open plan kitchen / dining / sitting room with bi-fold doors to the rear enclosed courtyard garden. The kitchen includes integrated fridge/freezer, dishwasher, single electric oven/induction hob, wine fridge. The first floor has two double bedrooms and a family bathroom with shower over bath. To the second floor is a primary bedroom with ensuite shower room, dressing room area and generous sized balcony. Landscaped communal gardens

EPC Rating B / Available now / Deposit £1900 / Unfurnished



TOTAL FLOOR AREA: 1134 sq.ft. (105.4 sq.m.) approx.  
 Whilst every attempt has been made to ensure the accuracy of the floorplan, measurements of rooms and any other items are approximate. It is included in the plan the gas/appliances will form part of the overall floor area and no responsibility is taken for any error, omission or mis-statement. This plan is for illustrative purposes only and should be used as such by any prospective purchaser. The services, systems and appliances shown have not been tested and no guarantee as to their operability.  
 Made with Metropix ©2026