

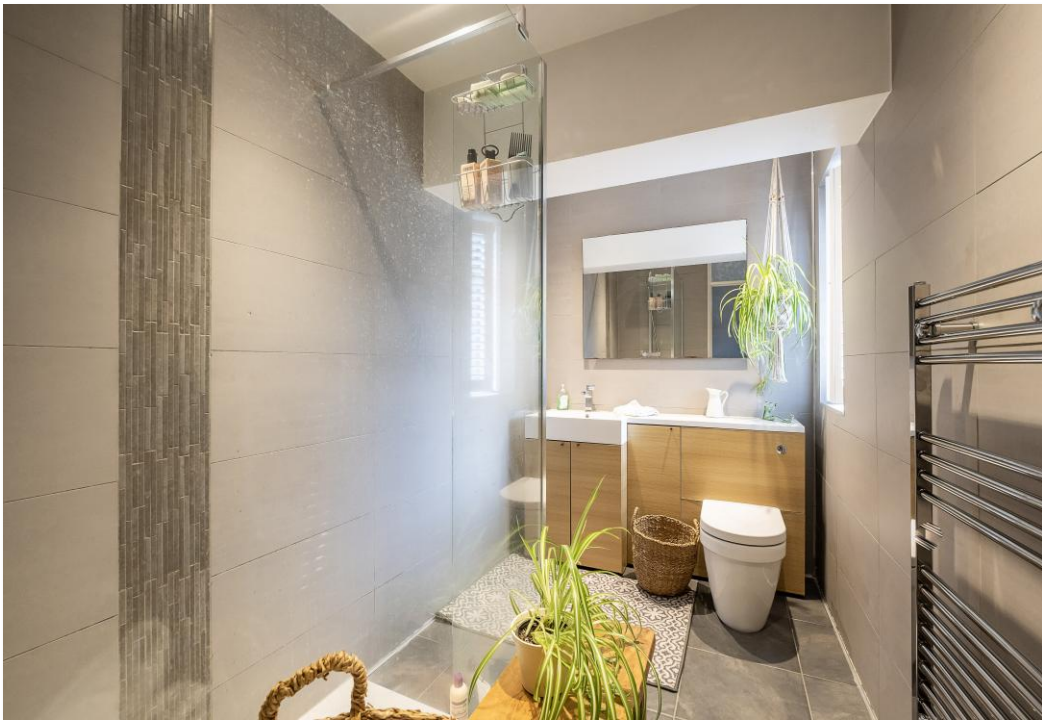


**St. Marys Avenue, Northchurch Berkhamsted HP4 3RW**



The heart of the home is a beautifully extended open-plan kitchen/dining/living area, featuring charming ceiling beams, a stylish fitted kitchen with ample storage and worktop space, and bi-folding doors opening onto the garden framing delightful views straight from the front door. The accommodation further comprises two generously sized bedrooms, a beautifully appointed family shower room, separate WC, and a practical utility room. A versatile loft space, already carpeted and filled with natural light, offers excellent potential as a home office or hobby room. Externally, the landscaped rear garden has been thoughtfully designed, with a large, tiled patio leading down to a lawn and an additional secluded seating area to the rear perfect for relaxing or entertaining. To the front, the property benefits from driveway parking and enjoys a convenient location within a short walk of Northchurch's local shops, doctor's surgery, and transport links, while Berkhamsted High Street is just a short drive away.





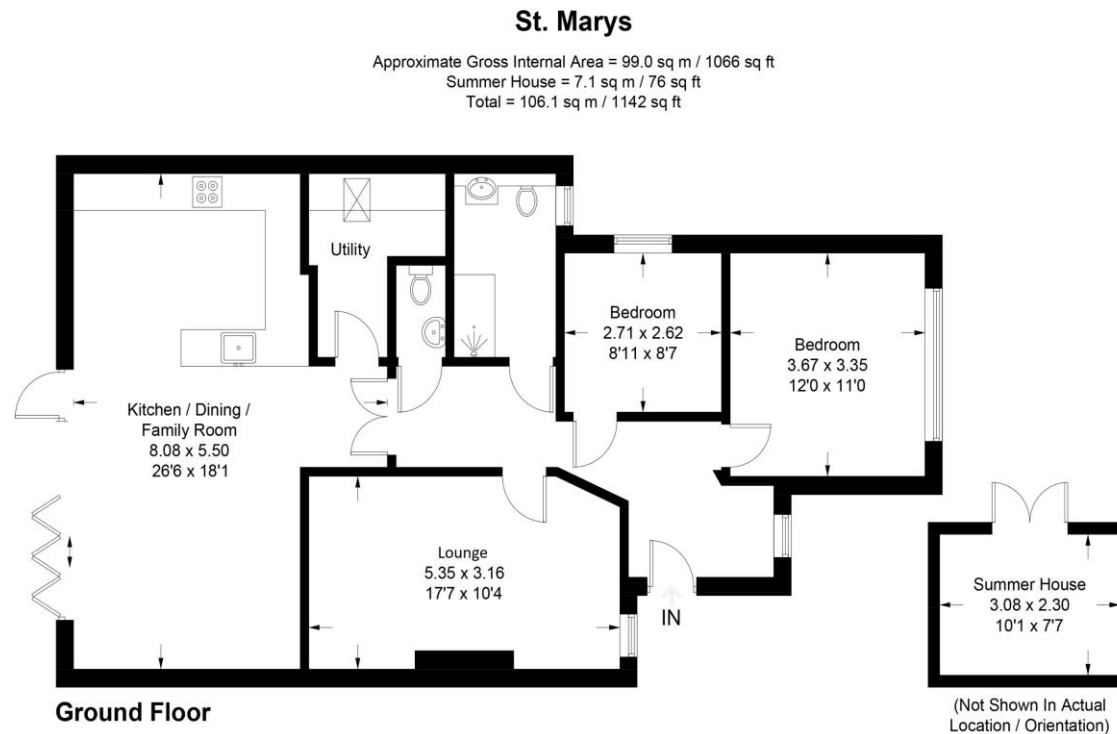
welcome to  
**St. Marys Avenue, Northchurch  
Berkhamsted**

- Semi-detached Bungalow
- Beautiful condition throughout
- Two bedrooms
- Extended open-plan kitchen/dining/ living
- Separate lounge

Tenure: Freehold EPC Rating: Awaiting  
Council Tax Band: D

offers in the region of  
**£625,000**

This stunning extended two-bedroom semi-detached bungalow is presented in excellent condition throughout, with standout living space that impresses from the moment you step inside.



This plan is for layout guidance only. Not drawn to scale unless stated. Windows and door openings are approximate. Whilst every care is taken in the preparation of this plan, please check all dimensions, shapes and compass bearings before making any decisions reliant upon them. (ID1294403)

**check out more properties at** [brownandmerry.co.uk](http://brownandmerry.co.uk)  
**see all our properties on** [zoopla.co.uk](http://zoopla.co.uk) | [rightmove.co.uk](http://rightmove.co.uk) | [sequencehome.co.uk](http://sequencehome.co.uk)



Property Reference:  
BKH103332 - 0002

1. MONEY LAUNDERING REGULATIONS Intending purchasers will be asked to produce identification documentation at a later stage and we would ask for your co-operation in order that there is no delay in agreeing the sale. 2. These particulars do not constitute part or all of an offer or contract. 3. The measurements indicated are supplied for guidance only and as such must be considered incorrect. Potential buyers are advised to recheck measurements before committing to any expense. 4. We have not tested any apparatus, equipment, fixtures or services and it is in the buyers interest to check the working condition of any appliances. 5. Where an EPC, or a Home Report (Scotland only) is held for this property, it is available for inspection at the branch by appointment. If you require a printed version of a Home Report, you will need to pay a reasonable production charge reflecting printing and other costs. 6. We are not able to offer an opinion either written or verbal on the content of these reports and this must be obtained from your legal representative. 7. Whilst we take care in preparing these reports, a buyer should ensure that his/her legal representative confirms as soon as possible all matters relating to title including the extent and boundaries of the property and other important matters before exchange of contracts.



**01442 870444**



[berkhamsted@brownandmerry.co.uk](mailto:berkhamsted@brownandmerry.co.uk)



124 High Street, BERKHAMSTED,  
Hertfordshire, HP4 3AT



**[brownandmerry.co.uk](http://brownandmerry.co.uk)**