



**93 Radnor Drive
Churchtown, PR9 9RS £255,000
'Subject to Contract'**

Situated on one of Churchtown's most sought-after roads, this extended semi-detached bungalow offers flexible living across two floors. The ground floor features the majority of the accommodation, with a front lounge and bedroom, a second bedroom leading via inner hall and staircase to a first-floor bedroom with modern en-suite (Dormer Loft Conversion). The rear boasts a modern kitchen opening into a rear lounge, all flowing seamlessly into a stunning orangery with a lantern roof. With a ground floor bathroom, easy-maintenance paved gardens, off-road parking, and an EV charging point, this home blends comfort with convenience. Enjoy boutique shops, restaurants, schools, and easy commuter links nearby, this is a rare opportunity not to be missed!

12A Anchor Street, Southport, Merseyside PR9 0UT
01704 512121 F 01704 512122
sales@christinsley.co.uk www.christinsley.co.uk

Southport's Estate Agent

Enclosed Side Entrance Vestibule

UPVC double glazed double outer doors with tiled flooring and a glazed inner door leading to:

Entrance Hall

Inner hallway with turning staircase to the first-floor dormer loft conversion, complete with handrail, spindles and newel post. Further internal door provides access to the second ground floor bedroom. Door leads to:

Lounge – 4.44m x 3.30m (14'6" into bay x 10'10" into recess)

UPVC double glazed bay window to the front. Living flame gas fire with marble interior, hearth and wooden surround.

Bedroom One – 4.06m x 3.30m (13'4" x 10'10")

UPVC double glazed window to the front elevation.

Bedroom Two – 2.54m x 3.33m (8'4" x 10'11")

Opaque UPVC double glazed window.

Kitchen – 2.34m x 3.25m (7'8" x 10'8")

UPVC double glazed window to the side. Modern fitted kitchen comprising a range of base and wall units with complementary working surfaces. Single bowl sink unit with mixer tap and drainer. Integrated appliances include a four-ring gas hob with extractor over and electric double oven, with plumbing available for a washing machine. Woodgrain-effect laminate flooring, part-tiled walls and panelled ceiling. Open-plan access leading to:

Dining Room – 3.48m x 3.30m (11'5" x 10'10")

UPVC double glazed sliding patio doors opening onto the rear garden. Coal-effect gas fire with limestone interior, surround and hearth. Wall-mounted 'Vaillant' combination boiler. Woodgrain-effect laminate flooring. Square archway with open-plan access to:

Orangery – 3.63m x 3.20m (11'11" x 10'6")

UPVC double glazed double doors opening onto the rear garden. Double glazed lantern-style roof providing an abundance of natural light. Centrally heated.

Bathroom – 2.18m x 1.88m (7'2" x 6'2")

Opaque UPVC double glazed window. Modern three-piece suite comprising vanity wash hand basin with mixer tap, panelled bath and walk-in shower enclosure with glazed door and electric shower. Part-tiled walls and extractor fan.

WC – 1.63m x 0.84m (5'4" x 2'9")

Opaque UPVC double glazed window. Low-level WC and wash hand basin. Part-tiled walls with wall-mounted grab rail.

First Floor

First-Floor Dormer Loft Conversion – 6.65m x 3.20m (21'10" including areas of reduced head height x 10'6")

UPVC double glazed window to the rear and double-glazed skylight. Recessed spot lighting and loft access. Inner hall leading to:

En-suite Shower Room/WC – 2.18m x 2.13m (7'2" x 7'0")

Opaque UPVC double glazed window. Modern three-piece white suite comprising low-level WC, vanity wash hand basin with mixer tap and walk-in shower enclosure with glazed screen, plumbed rainfall-style shower and separate handheld attachment. Fully tiled walls, heated towel rail and recessed spot lighting.

Outside

Flagged driveway to the front providing off-road parking and incorporating an electric vehicle charging point. Low-maintenance frontage with decorative stone features. Flagged side access leads via a secure gate to the enclosed rear garden, which benefits from patio areas, decorative stone features, raised borders and two useful garden stores.

Council Tax

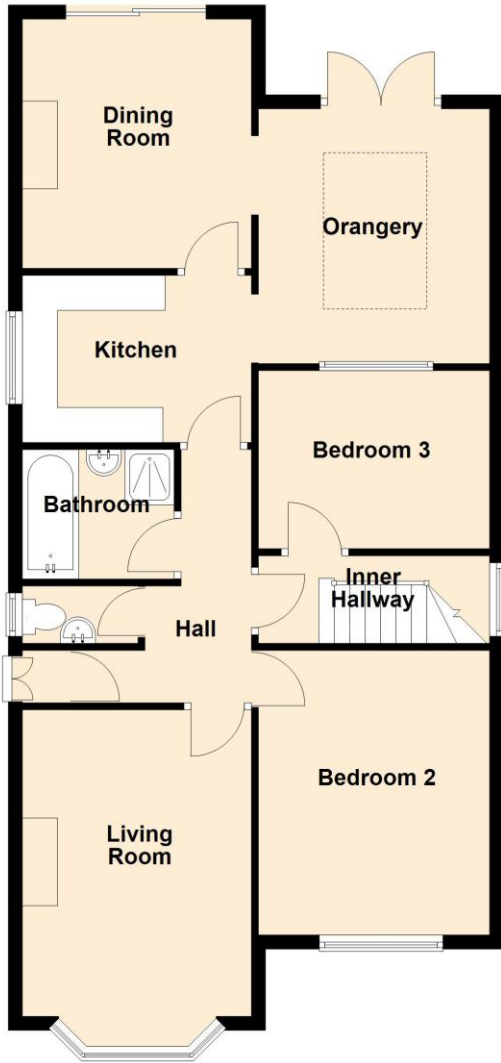
Sefton MBC Band C

Tenure

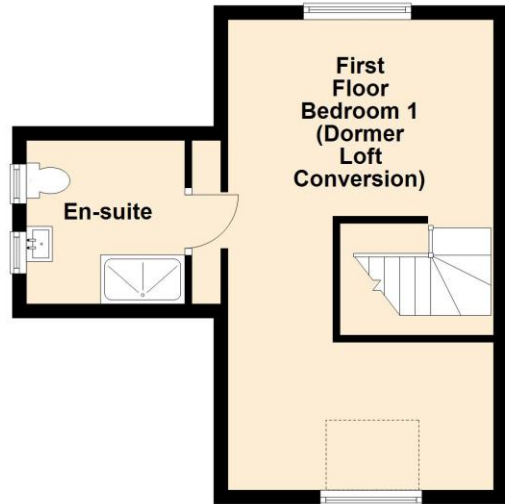
Freehold



Ground Floor



First Floor



Energy Efficiency Rating		
	Current	Potential
Very energy efficient - lower running costs		
(92 plus) A		
(81-91) B		83
(69-80) C		
(55-68) D		
(39-54) E	52	
(21-38) F		
(1-20) G		
Not energy efficient - higher running costs		
England & Wales	EU Directive 2002/91/EC	



Chris Tinsley Estate Agents confirm that they have not tested any appliances or services at the property and cannot confirm their working condition or status. Prospective purchasers are advised to carry out their own investigations. The agents also give notice that these details do not constitute an offer or a contract and that no person employed by the agents has any authority to make or give any warranty or representation in relation to this property. All information supplied is believed to be correct but prospective purchasers should satisfy themselves by inspection or otherwise as to the correctness of the statements contained in these particulars. Floor plans are for illustration purpose only and are not to scale.