



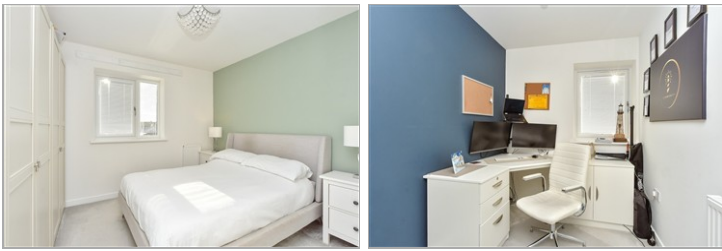
Price
£400,000

Freehold

4x  2x  1x 

**Nova Avenue,
Faversham, Kent, ME13**

Wards
Helping you move forwards



Main features

- Walking distance to the historic market town
- Generous accommodation
- Convenient location for schools
- Great access to key roads, mainline station and links into London
- Short drive to Seasalter and Whitstable beaches

Accommodation

GROUND FLOOR

- Entrance Hall
- Cloakroom
- Kitchen/Diner: 19'2 x 10'2 (5.85m x 3.10m)
- Lounge: 17'11 x 14'7 (5.46m x 4.45m)

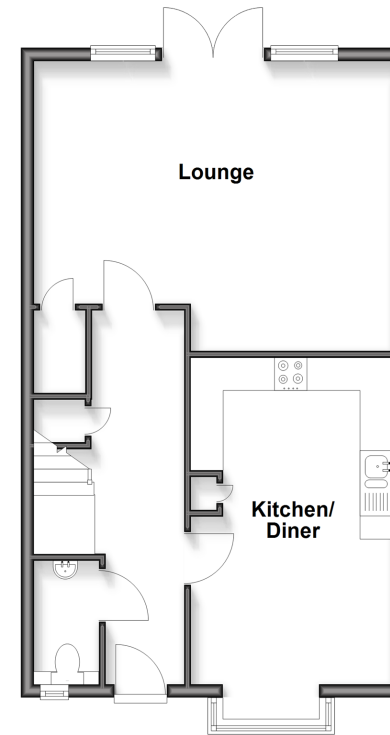
FIRST FLOOR

- Landing
- Bedroom 1: 13'10 x 11'1 (4.22m x 3.38m)
- En-suite Shower Room
- Bedroom 2: 10'6 x 9'7 (3.20m x 2.92m)
- Bedroom 3: 9'7 x 7'1 (2.92m x 2.16m)
- Bedroom 4: 9'6 x 6'6 (2.90m x 1.98m)
- Bathroom

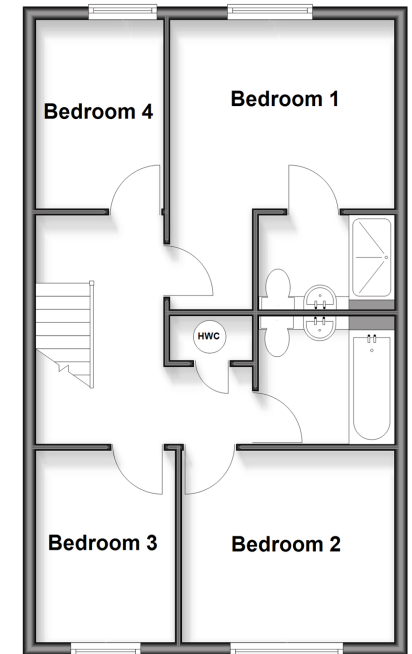
OUTSIDE

- Front Garden
- Rear Garden
- Driveway
- Parking For 2 Cars

Ground Floor
Approx. 52.9 sq. metres (569.2 sq. feet)



First Floor
Approx. 52.5 sq. metres (565.0 sq. feet)



Call Faversham - 01795 535517 ■ wardsof Kent.co.uk

- Legal advice should be taken to verify fixtures/fittings, planning, alterations and/or lease details
- Appliances & services are untested, dimensions are approximate and floor plans are not to scale



10832596/20260317/PJ/SJ