

Suite 2066, Fleet House, Springhead Road, Kent, DA11 8HJ.

Sales: 01474 330840 Email: info@watermanexclusive.com

www.watermanexclusive.com



WATERMAN
EXCLUSIVE



Terrys Lane, Whitstable, CT5 1DF

Asking price **£450,000**

Nestled just a stones throw from the beautiful Whitstable seafront, this property offers the perfect blend of coastal charm and modern living.

Step inside to discover a well equipped kitchen and light and spacious open-plan lounge/diner, ideal for both relaxing and entertaining. Plus a convenient downstairs WC adds practicality to the ground floor.

On the first floor the property boasts two generous bedrooms, one of which has built in storage, plus a family bathroom.

The master suite is situated on the top floor and benefits from an en-suite and walk in wardrobe.

Outside, you'll find a low-maintenance courtyard garden—perfect for summer evenings or morning coffee. The property also benefits from an allocated parking space, a rare and valuable asset in this central location.

Terrys Lane is a quiet residential street tucked away in the heart of Whitstable, offering the best of both worlds—peaceful surroundings with everything you need on your doorstep. The beach is just a few minutes' walk away, as are the bustling High Street, local galleries, and the charming working harbour. Excellent transport links, including Whitstable train station with direct routes to London, make this an ideal spot for commuters or weekend getaways.



7 Terrys Lane, Whitstable, CT5 1DF

GROUND FLOOR

Kitchen

WC

Lounge/Diner

FIRST FLOOR

Bedroom

Bedroom

Bathroom

SECOND FLOOR

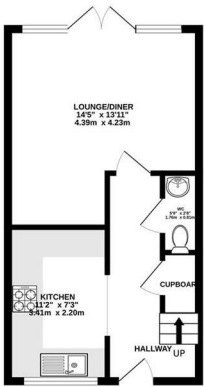
Bedroom

En-Suite

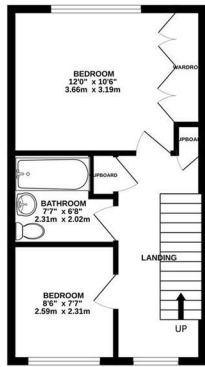
EXTERNAL



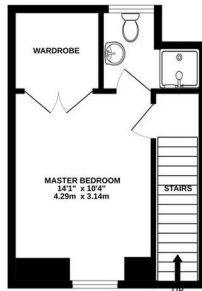
GROUND FLOOR
355 sq.ft. (33.0 sq.m.) approx.



1ST FLOOR
355 sq.ft. (33.0 sq.m.) approx.



2ND FLOOR
260 sq.ft. (24.1 sq.m.) approx.



TOTAL FLOOR AREA: 971 sq.ft. (90.2 sq.m.) approx.

Whilst every attempt has been made to ensure the accuracy of the floorplan contained herein, measurements of doors, windows, rooms and any other items are approximate and no responsibility is taken for any error, omission or mis-statement. This plan is for illustrative purposes only and should be used as such by any prospective purchaser. The services, systems and appliances shown have not been tested and no guarantee as to their operability or efficiency can be given.

Made with Metropict ©2025

Energy Efficiency Rating

| | Current | Potential |
|---|-------------------------|-----------|
| Very energy efficient - lower running costs | | |
| (92 plus) A | | 87 |
| (81-91) B | | |
| (69-80) C | | 75 |
| (55-68) D | | |
| (39-54) E | | |
| (21-38) F | | |
| (1-20) G | | |
| Not energy efficient - higher running costs | | |
| England & Wales | EU Directive 2002/91/EC | |

Environmental Impact (CO₂) Rating

| | Current | Potential |
|---|-------------------------|-----------|
| Very environmentally friendly - lower CO ₂ emissions | | |
| (92 plus) A | | |
| (81-91) B | | |
| (69-80) C | | |
| (55-68) D | | |
| (39-54) E | | |
| (21-38) F | | |
| (1-20) G | | |
| Not environmentally friendly - higher CO ₂ emissions | | |
| England & Wales | EU Directive 2002/91/EC | |