



## SMUGGLERS WAY, SW18

£450,000

- Two double bedrooms
- Private balcony
- View of the River Thames
- Modern bathroom
- Sought after location
- Energy rating: C





## ABOUT THE HOME

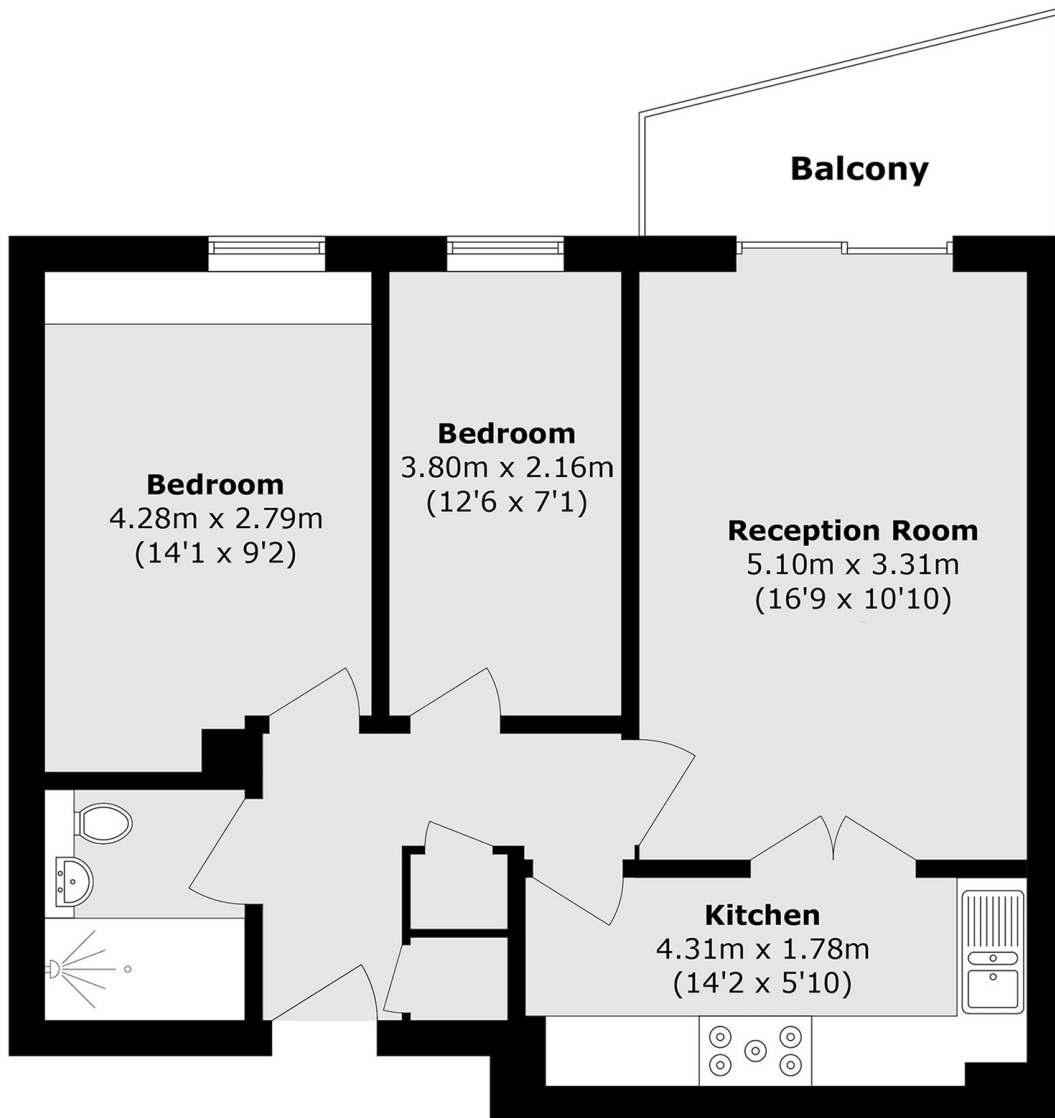
A well presented, two bedroom modern apartment with a large, private balcony situated in a sought after development which sits adjacent to the River Thames.

Situated on the third floor, the accommodation comprises a welcoming entrance hall with useful built in storage, a bright open plan reception room and integrated kitchen with doors leading to a large private balcony benefitting from views of the River Thames. The apartment and balcony are not overlooked by others in the development. There are two generous double bedrooms and a modern family bathroom. The development further benefits from 24 hour concierge service and well maintained communal gardens.

Riverside West is a desirable development on the banks of the river, close to Wandsworth Bridge. Whilst benefitting from a range of on site amenities, including a grocery shop, cafe and Virgin Active gym, it is also ideally situated to take advantage of the local shops and cafes in Wandsworth and across the bridge in Fulham. Wandsworth Town station is just a short distance away (0.2 miles) which offers regular over ground services to London Waterloo via Clapham Junction.







Total area (approx.): 55.9 sq. m (601.7 sq. ft)

Balcony area (approx.): 3.2 sq. m (34.4 sq. ft)

#### JACKSONS EARLSFIELD

372-374 Garratt Lane,  
Earlsfield, London, SW18 4ES  
Sales: 020 8971 7979  
Lettings: 020 8971 7070

Energy Rating: C We aim to make our particulars both accurate and reliable. However they are not guaranteed; nor do they form part of an offer or contract. If you require clarification on any points then please contact us, especially if you're traveling some distance to view. Please note that appliances and heating systems have not been tested and therefore no warranties can be given as to their good working order.