

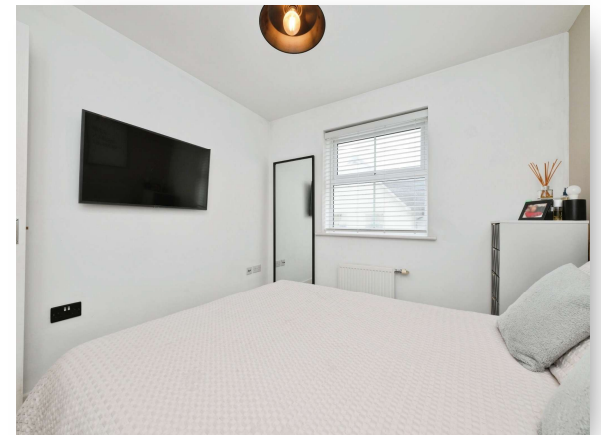
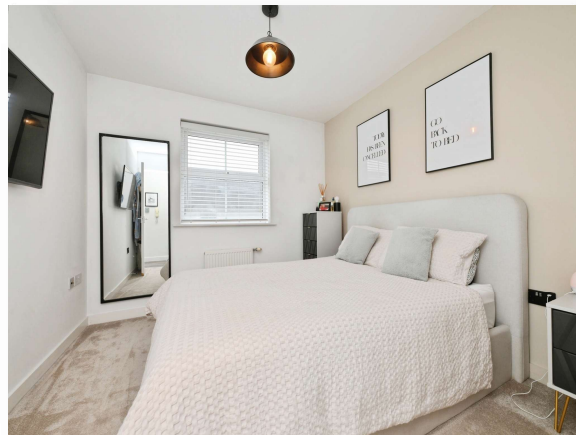


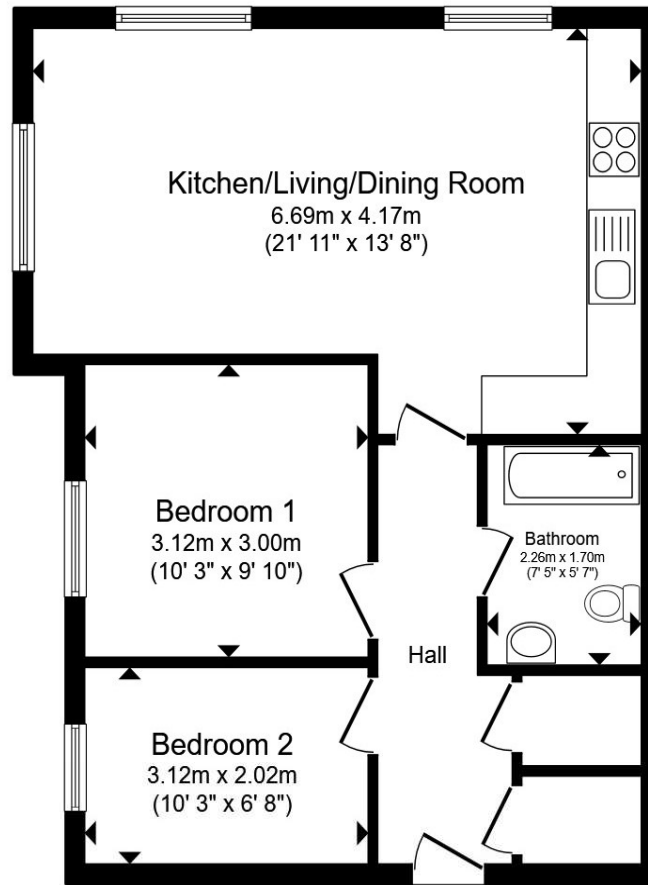
Plaxton Way, Ware SG12 7FG

welcome to

Plaxton Way, Ware

Well presented TWO BEDROOM FIRST FLOOR APARTMENT within walking distance of all local amenities including Ware High Street & Railway Station. Entrance hall with two storage cupboards, Dual aspect open plan living accommodation with fitted kitchen, re-fitted luxury bathroom.





First Floor

Total floor area 54.4 m² (585 sq.ft.) approx

This floor plan is for illustrative purposes only. It is not drawn to scale. Any measurements, floor areas (including any total floor area), openings and orientation are approximate. No details are guaranteed, they cannot be relied upon for any purpose and they do not form part of any agreement. No liability is taken for any error, omission or misstatement. A party must rely upon its own inspection(s). Powered by www.propertybox.io



Accommodation Comprises

The Apartment

Entrance Hall

Kitchen/Living/Dining Room

13' 8" max x 21' 11" max (4.17m max x 6.68m max)

Sitting/Dining Area

Fitted Kitchen Area

Bedroom 1

9' 10" max x 10' 3" max (3.00m max x 3.12m max)

Bedroom 2

6' 8" max x 10' 3" max (2.03m max x 3.12m max)

Bathroom

Exterior

welcome to

Plaxton Way, Ware

- FIRST TIME BUY OR DOWNSIZERS RECOMMENDED
- TWO DOUBLE BEDROOMS
- DUAL ASPECT/OPEN PLAN SITTING AND DINING ROOM
- GAS CENTRAL HEATING VIA RADS
- ALLOCATED PARKING

Tenure: Leasehold EPC Rating: B

Council Tax Band: C Service Charge: 1700.52

Ground Rent: Ask Agent

This is a Leasehold property. We are awaiting further details about the Term of the lease. For further information please contact the branch. Please note additional fees could be incurred for items such as Leasehold packs.

£325,000



Please note the marker reflects the postcode not the actual property

view this property online [williamhbrown.co.uk/Property/WRE107984](https://www.williamhbrown.co.uk/Property/WRE107984)



Property Ref:
WRE107984 - 0004

1. MONEY LAUNDERING REGULATIONS Intending purchasers will be asked to produce identification documentation at a later stage and we would ask for your co-operation in order that there is no delay in agreeing the sale. 2. These particulars do not constitute part or all of an offer or contract. 3. The measurements indicated are supplied for guidance only and as such must be considered incorrect. Potential buyers are advised to recheck measurements before committing to any expense. 4. We have not tested any apparatus, equipment, fixtures or services and it is in the buyers interest to check the working condition of any appliances. 5. Where an EPC, or a Home Report (Scotland only) is held for this property, it is available for inspection at the branch by appointment. If you require a printed version of a Home Report, you will need to pay a reasonable production charge reflecting printing and other costs. 6. We are not able to offer an opinion either written or verbal on the content of these reports and this must be obtained from your legal representative. 7. Whilst we take care in preparing these reports, a buyer should ensure that his/her legal representative confirms as soon as possible all matters relating to title including the extent and boundaries of the property and other important matters before exchange of contracts.



william h brown



01920 465411



Ware@williamhbrown.co.uk



80 High Street, WARE, Hertfordshire, SG12 9AT



[williamhbrown.co.uk](https://www.williamhbrown.co.uk)