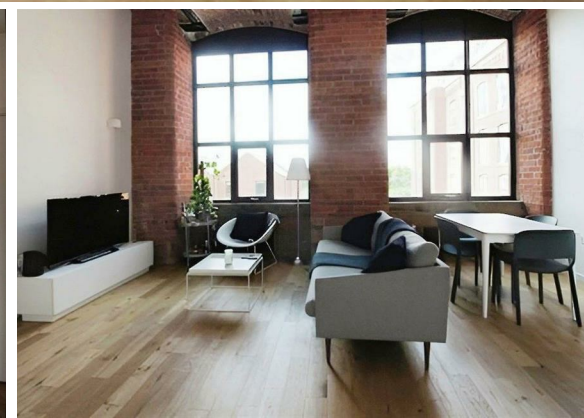
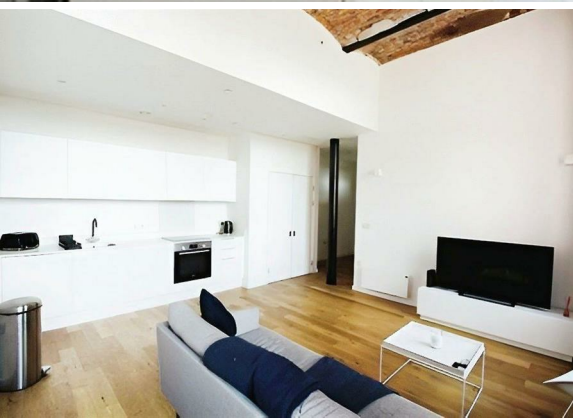




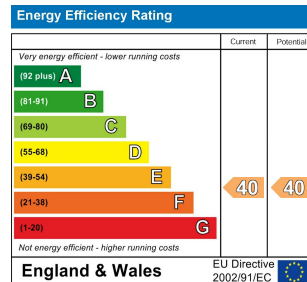
2 Bed
Apartment
located in Reddish

£1,150 PCM



 **NPP**
RESIDENTIAL

EPC Rating: E
Council Tax Band: C



DIRECTIONS

CONTACT

22 Lloyd Street
Manchester
M2 5WA

E: info@nppresidential.co.uk
T: 0161 639 0059
<https://nppresidential.co.uk/>

