



Mill Field, Ash

£425,000

DOMINIC MURPHY POWERED BY **exp** TM UK

@ dominic.murphy@exp.uk.com

🌐 dominicmurphy.exp.uk.com

☎ 01304 746 016

## Mill Field, Ash

An exceptional three-bedroom, two-bathroom semi-detached home, seamlessly combining contemporary living with a picturesque setting.

Built in 2019, this impressive three-bedroom, two-bathroom semi-detached home is ideally positioned within a quiet cul-de-sac in the popular village of Ash. Set on a small sought-after development and surrounded by open countryside, this superb property effortlessly combines modern comfort with a picturesque setting.

Internally, the home opens into a welcoming entrance hall with a convenient WC, leading through to a beautifully presented, light-filled open-plan kitchen and dining area, thoughtfully designed for both everyday living and entertaining. Double French doors connect this space to a generous living room, creating a seamless flow and an enhanced sense of space across the ground floor.

Upstairs, the generously proportioned principal bedroom benefits from a stylish en-suite, while two further well-sized double bedrooms are served by a contemporary family bathroom, complete with an elegant freestanding bath.

Externally, the property boasts a large, gated driveway providing off-road parking for multiple vehicles, along with a barn-style garage. The rear garden is predominantly laid to lawn and complemented by two separate patio areas, ideal for enjoying the sun throughout the day. An additional, versatile garden area further enhances the outdoor space. A particular highlight is the garden studio with power, perfect for use as a home office, gym, or creative space.

Location - The village of Ash provides excellent amenities including two village stores, a post office, primary and private schools, a public house, and good transport links via the A257 to Canterbury and Sandwich.

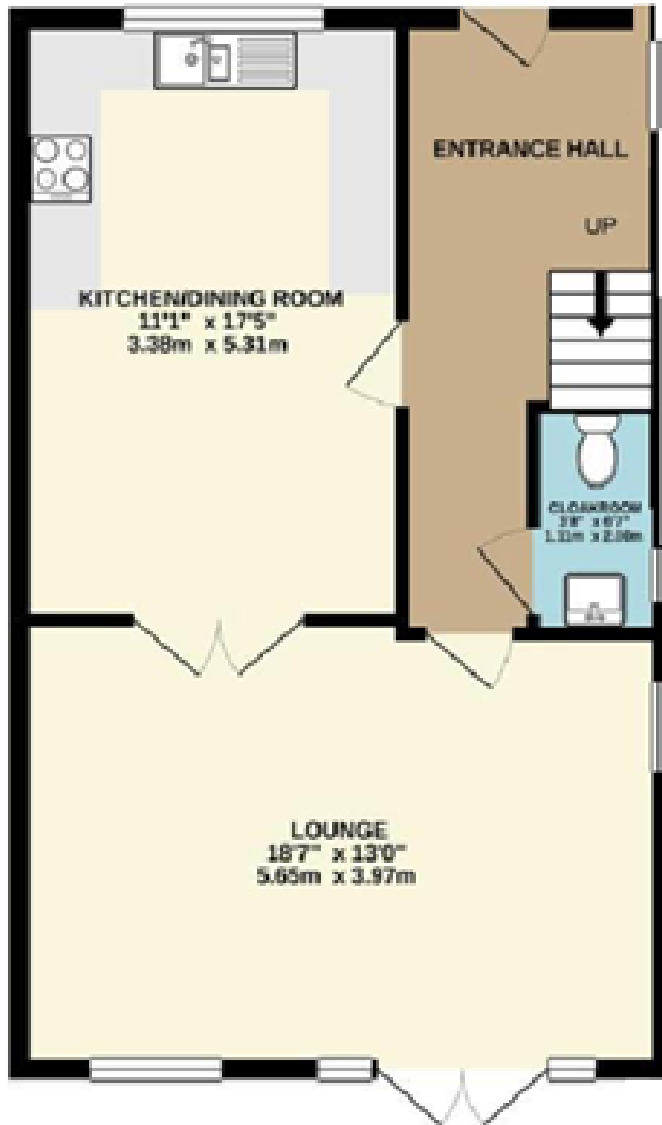








GROUND FLOOR  
766 sq.ft. (71.2 sq.m.) approx.



1ST FLOOR  
565 sq.ft. (52.5 sq.m.) approx.

