



Tankerton Road

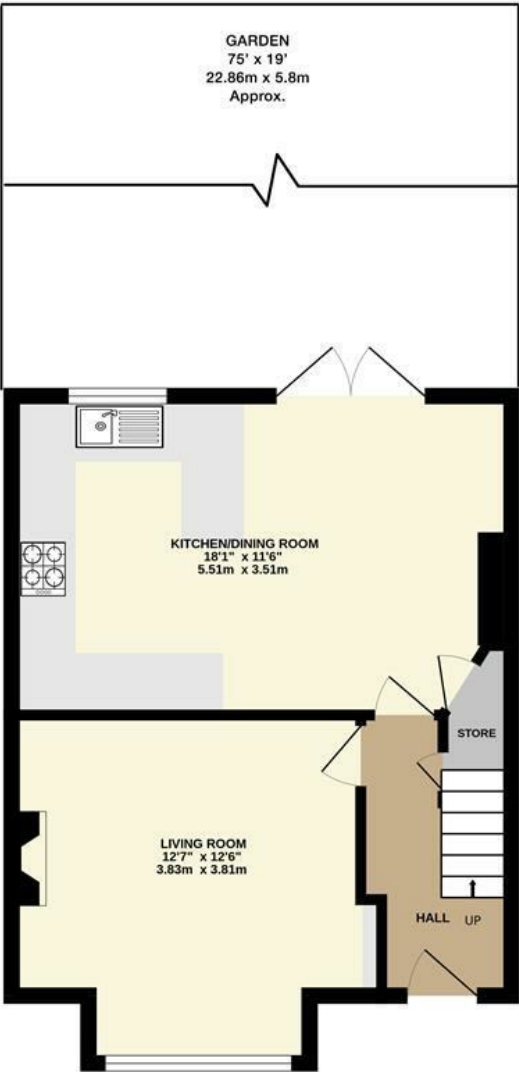
Surbiton, KT6 7LG

Guide Price £700,000

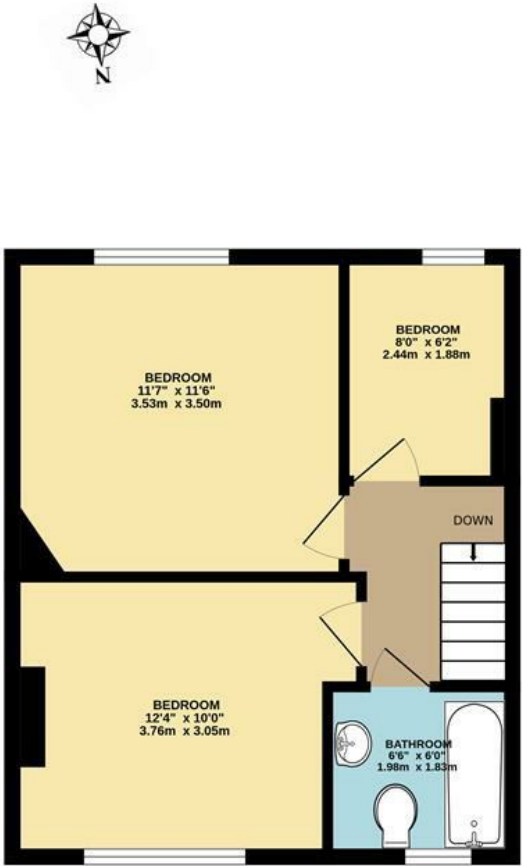
A beautifully presented, three-bedroom Edwardian end of terrace, which has lots of character and period features throughout. The property is situated in a quiet residential road with local shops, excellent schools and amenities a short walk away. On the ground floor the property comprises of a good size living room with feature fireplace and open plan kitchen/dining room. Large French doors open on to the south facing garden with paved dining area. Upstairs there are three bedrooms, two of which are doubles and a bathroom. There is potential for extension subject to planning permission.

- End of Terrace
- Kitchen/Dining Room
- Three Bedrooms
- Pretty Rear Garden
- Close to transport
- Re-pointed Brickwork in Traditional Lime Tuck
- Living Room
- Upstairs Bathroom
- Potential to Extend Subject to Planning
- Close to local schools

Floor Plan



GROUND FLOOR

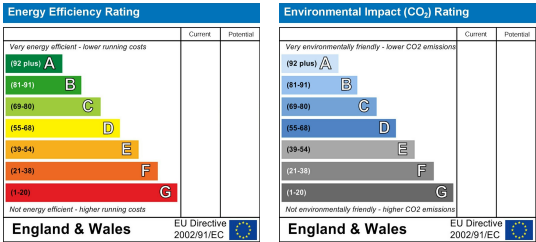


FIRST FLOOR

TANKERTON ROAD, SURBITON
INTERNAL FLOOR AREA (APPROX.) 790 sq ft/ 73.4 sq m

Whilst every attempt has been made to ensure the accuracy of this floor plan, measurement of doors, windows, rooms and any other items are approximate and no responsibility is taken for any error, omission or mis-statement. Made with Metropix © 2025.

Energy Efficiency Graph



These particulars, whilst believed to be accurate are set out as a general outline only for guidance and do not constitute any part of an offer or contract. Intending purchasers should not rely on them as statements of representation of fact, but must satisfy themselves by inspection or otherwise as to their accuracy. No person in this firms employment has the authority to make or give any representation or warranty in respect of the property.