



HILLRISE VALEWOOD LANE

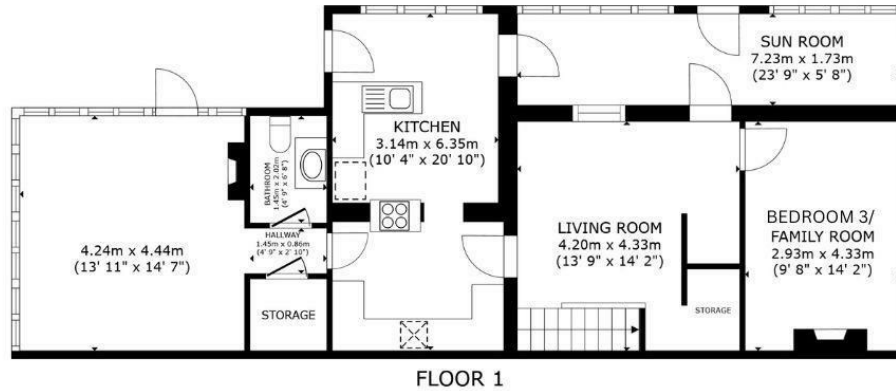
HORSHAM, RH13 0QJ

£550,000
FREEHOLD

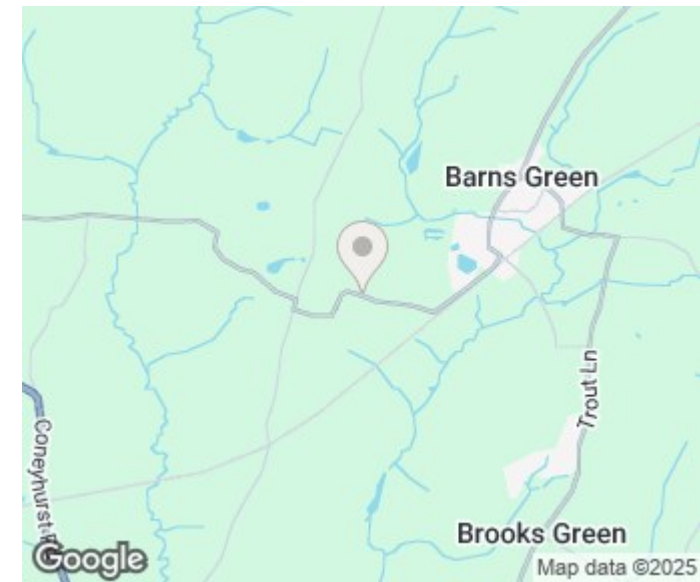
Eltons are delighted to present this charming 2/3 bedroom semi-detached cottage offering a delightful blend of comfort and potential and set on a large plot with ample parking.

ELTONS

Estate Agents



GROSS INTERNAL AREA
FLOOR 1 94.4 m² (1,016 sq.ft.) FLOOR 2 40.1 m² (431 sq.ft.)
TOTAL : 134.4 m² (1,447 sq.ft.)
SIZES AND DIMENSIONS ARE APPROXIMATE, ACTUAL MAY VARY.



Energy Efficiency Rating		
	Current	Potential
Very energy efficient - lower running costs		
(92 plus) A		
(81-91) B		
(69-80) C		
(55-68) D		
(39-54) E		
(21-38) F		
(1-20) G		
Not energy efficient - higher running costs		
England & Wales	EU Directive 2002/91/EC	

Agents Note: Whilst every care has been taken to prepare these particulars, they are for guidance purposes only. All measurements are approximate and are for general guidance purposes only and whilst every care has been taken to ensure their accuracy, they should not be relied upon and potential buyers/tenants are advised to recheck the measurements

Eltons Estate Agents Horsham
13 - 15 Queen Street
Horsham
West Sussex
RH13 5AA

01403 299 771
sales@eltons.co.uk
eltons.co.uk

ELTONS

Estate Agents