

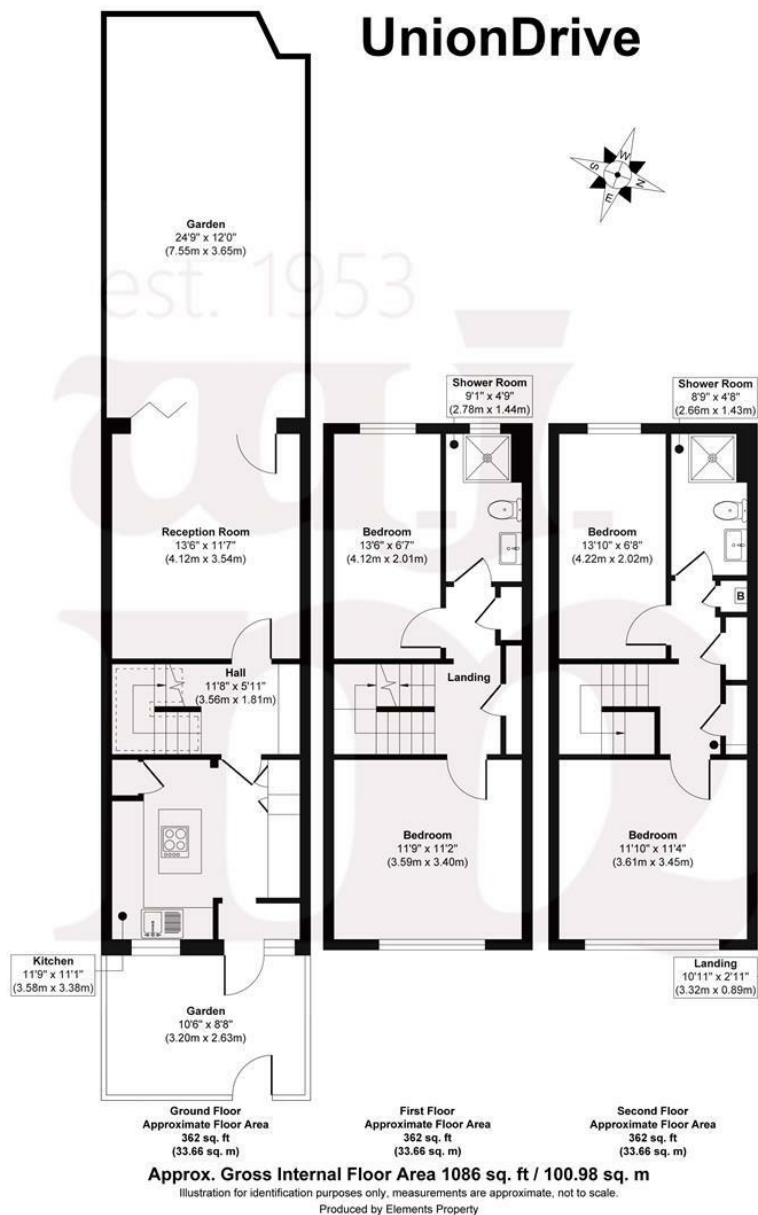


UNION DRIVE, STEPNEY GREEN E1

£800,000 FREEHOLD

- Chain Free
- Front & Rear Gardens
- East to West Aspect
- Residential Parking
- Partial Water Views
- Great Storage Including Loft Space

wj.
meade



WJ Meade are pleased to present this well appointed four bedroom townhouse in a quiet residential setting by the Regents Canal. Arranged over 1086 sq ft with a modern fitted kitchen and separate reception room which has bi-folding doors out to a west facing garden. With contemporary shower rooms serving the bedrooms on both the first and second floors, the accommodation is beautifully maintained throughout. Situated conveniently for Mile End and Stepney Green underground stations, in the midst of a vibrant part of East London, including a wealth of nearby amenities and public parks.

All sizes are approximate. The Agent has not tested any apparatus, equipment, fixtures and fittings, or services and so cannot verify that they are in working order or fit for the purpose. A buyer is advised to obtain verification from their Solicitors or Surveyor. Photographs are for illustration purposes only and may depict items, which are not for sale or included in the sale price. References to tenure of a property are based upon information supplied by the vendor. The agent has not had sight of the title documents, a buyer is advised to obtain verification from their solicitor. Money Laundering Regulations 2003: Intending purchasers will be asked to produce identification, documentation at a later stage and we would ask for your co-operation in order that there will be no delay in agreeing the sale.

These particulars are intended to give a fair description of the property only and are in no way guaranteed, nor do of any contract. They are issued on the express condition that all negotiations are conducted through W.J. Meade Estate Agents. All subject to contract and to being unsold.

Council tax band E
 Current EPC Rating 80
 Tenure: Freehold

