



Wittering Close, KT2

£450,000

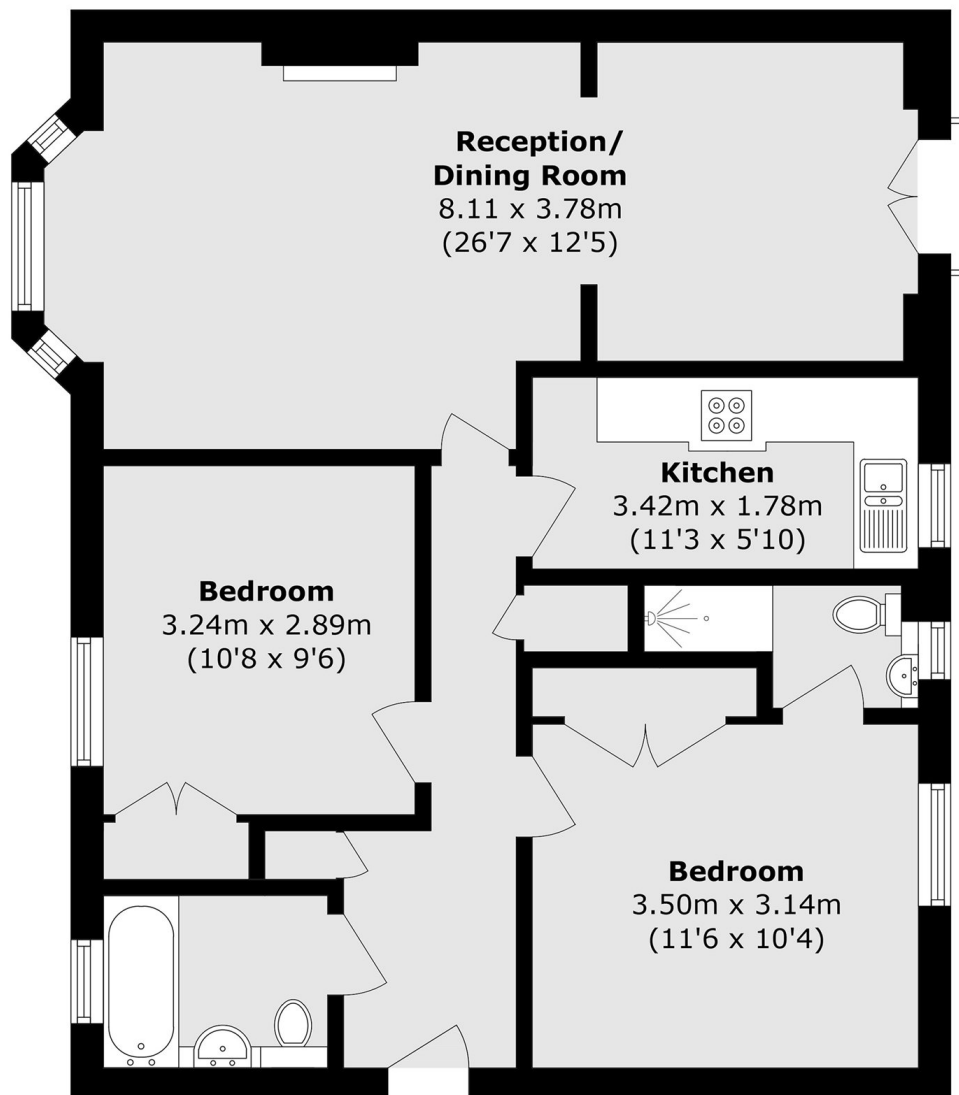
Located on a quiet residential cul-de-sac is this bright and spacious two bedroom flat. The property is well presented throughout, offering a generous reception room, two double bedrooms with fitted wardrobes, one with an en suite, main bathroom and spacious kitchen. Further benefits include off-street allocated parking. The property is located on the third floor, offering a fantastic view over the playing fields.

The property is located within easy reach of the tranquil open spaces of Richmond Park, while Kingston town centre is easily accessible for a wide variety of shops, bars and entertainment. Local transport links include Kingston Station and a great bus network.

Features

- Two Double Bedrooms
- Two Bathrooms
- Third Floor
- Allocated Parking
- Excellent Location
- Loft Storage

Wittering Close, Kingston Upon Thames, KT2



Total area (approx.): 73.2 sq. m (787.9 sq. ft)

Dexters

Kingston
4 Wood Street
Kingston Upon Thames
KT1 1TG

Sales
020 8546 3555

Energy Rating: C. We aim to make our particulars both accurate and reliable. However they are not guaranteed; nor do they form part of an offer or contract. If you require clarification on any points then please contact us, especially if you're traveling some distance to view. Please note that appliances and heating systems have not been tested and therefore no warranties can be given as to their good working order.

 **RICS** | Regulated
Estate Agent
and Letting Agent

[dexters.co.uk](https://www.dexters.co.uk)