

48 Larkspur Court, £149,950

(Other charges apply*)

RICHMOND
VILLAGES

Part of Bupa

GF

2



1



EPC - C



2 bedroom independent living cottage

We are delighted to offer 48 Larkspur Court, a cheerful, 2-bedroom independent living duplex apartment. The property is perfectly situated within easy access of our outstanding on-site facilities including the restaurant, bar, reception and hairdressers, beautifully manicured gardens, bowling green and shop. A beautiful property, ready to move into.

Specification

- A bright living room featuring stone effect fireplace and a double glaze window.
- The cheerful kitchen features a tiled splashback, a range of eye- and base-level units with ample space for appliances.
- A glass-panelled door opening onto a south-facing patio overlooking landscaped gardens.
- Two generously sized bedrooms, offering flexibility for a guest bedroom, home office or additional storage.
- A stylish wet room which includes a WC, hand wash basin, fully fitted vanity unit and a wet room shower.
- Located in a quiet and secluded part of the village.
- TV and satellite points*.
- Well stocked flower borders and lawns maintained by the Village Gardeners.
- Allocated parking space for one car.

*Satellite subscription not included.

Important Notice: These particulars are intended to give a fair and substantially correct overall description. Other fees and charges apply, please contact the Village Advisers for further details. Properties are sold on a 125-year lease, which commenced in 2009.

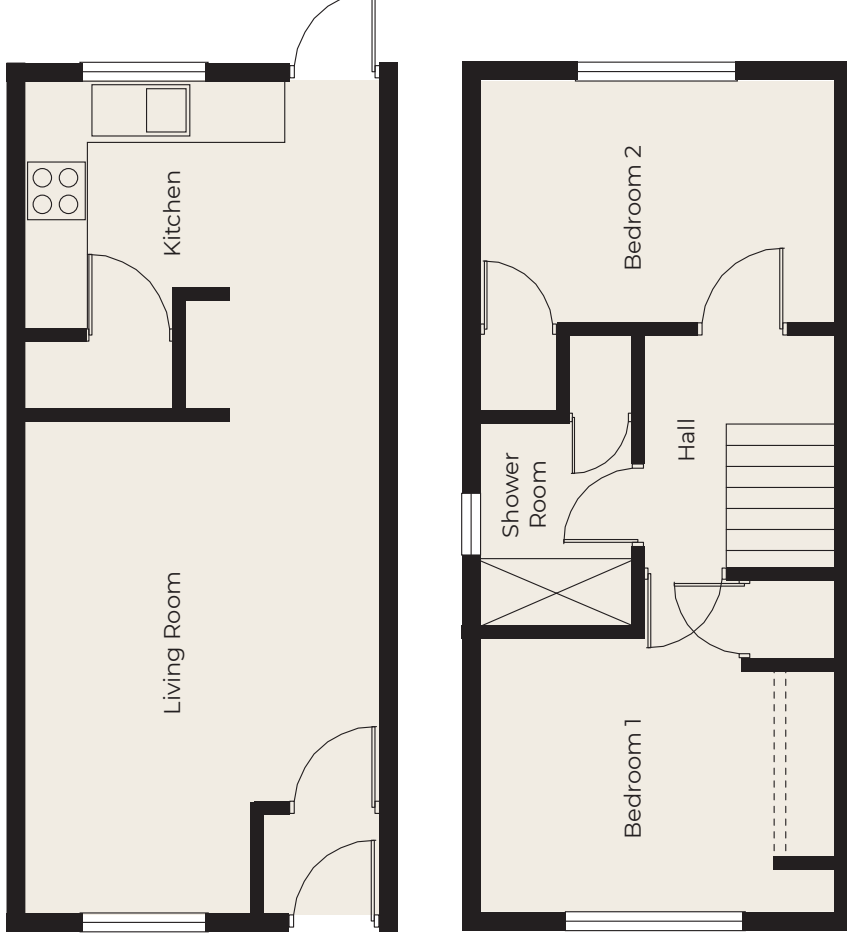
02476 645 544

bedevillage@richmond-villages.com

Richmond Villages Bede,
Hospital Lane, Bedworth, Warwickshire CV12 0PB

48 Larkspur Court

2 Storey Cottage | 58m²



- Kitchen**
2529mm x 1615mm
8'3" x 5'3"
- Living Room**
4605mm x 3627mm
15'11" x 11'9"
- Bedroom 1**
3566mm x 2733mm
11'7" x 9'10"
- Bedroom 2**
3577mm x 2164mm
11'7" x 7'10"
- Shower Room**
2042mm x 1706mm
6'7" x 5'6"

These particulars are intended to give a fair and substantially correct overall description. Measurements have been taken at 1500mm skirting height. All dimensions are approximate. Bedroom measurements include the wardrobe if applicable. Room measurements include bay windows if applicable. Furniture layout is to give an indicative impression. Although all efforts have been made to ensure its accuracy at time of print dimensions, fixtures, fittings, finishes and specifications are subject to change without notice. The properties are sold unfurnished.

