



MOVE INN ESTATES
MAKING THE RIGHT MOVE



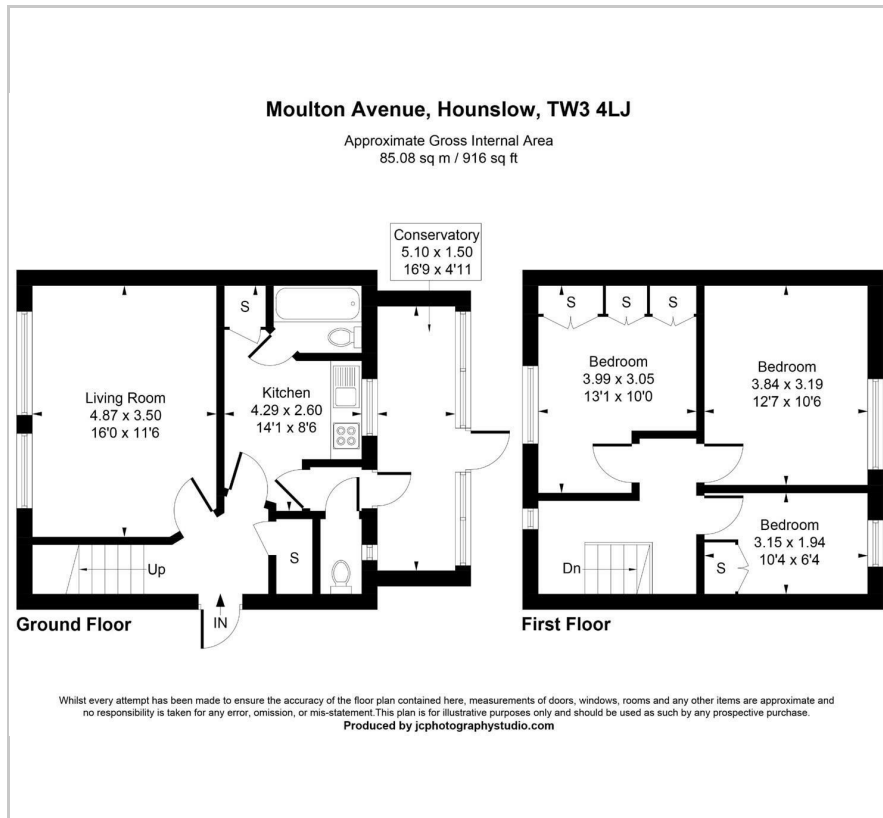
Moulton Avenue

, Hounslow, TW3 4LJ

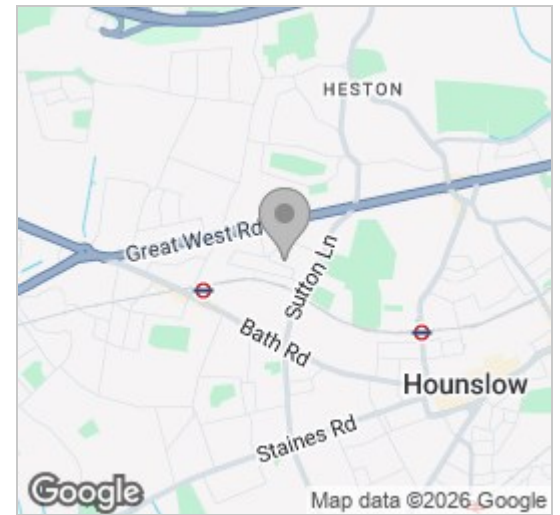
Offers In The Region Of £475,000



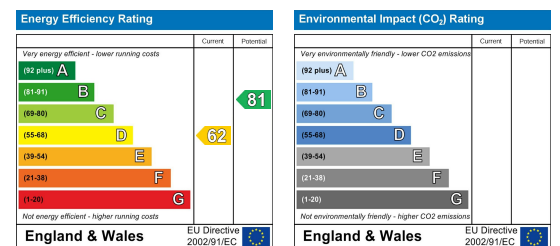
Floor Plan



Area Map



Energy Efficiency Graph



Viewing

Please contact our Move Inn Estates - Sales Office on 0208 574 4966 if you wish to arrange a viewing appointment for this property or require further information.

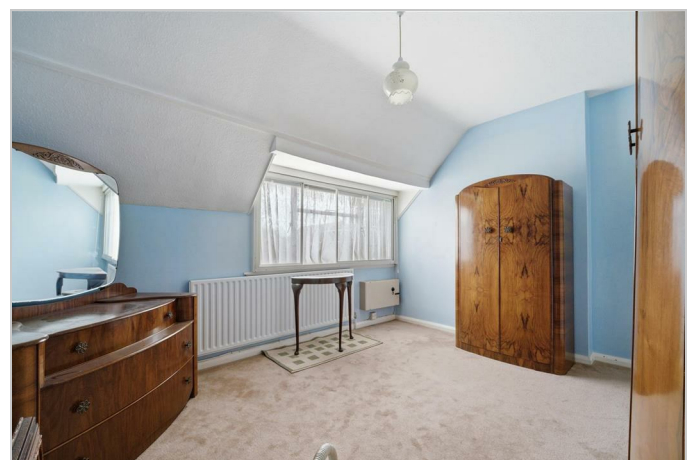
- Spacious terraced home in a prime Hounslow location
- Close to Hounslow West Underground Station and High Street
- Excellent access to the M4, ideal for commuters
- No onward chain for a smoother purchase
- Large reception room with space for living and dining areas
- Approx. 100ft rear garden with development potential (STPP)

Presenting a spacious terraced home, ideally located close to Hounslow West Underground Station, Hounslow High Street, and with excellent access to the M4, making it perfect for commuters and families alike. The property also benefits from no onward chain and offers excellent scope for development, subject to the usual planning consents.

The accommodation comprises three generously sized bedrooms, with spacious rooms throughout, and a well-proportioned reception rooms that provide flexibility for separate living and dining areas.

The kitchen sits at the heart of the home, complemented by a family bathroom that offers a comfortable and relaxing space.

Externally, the property boasts an impressive approximately 100ft rear garden, offering ample outdoor space for families, entertaining, or future extensions (STPP).



These particulars, whilst believed to be accurate are set out as a general outline only for guidance and do not constitute any part of an offer or contract. Intending purchasers should not rely on them as statements of representation of fact, but must satisfy themselves by inspection or otherwise as to their accuracy. No person in this firm's employment has the authority to make or give any representation or warranty in respect of the property.