



## ALDERNEY STREET, SW1V

£700,000

One bedroom  
Separate study area  
Spacious kitchen  
Natural light  
Private garden  
Energy rating: c

@marshandparsons  
marshandparsons.co.uk

MARSH &  
PARSONS



# ABOUT THE PROPERTY

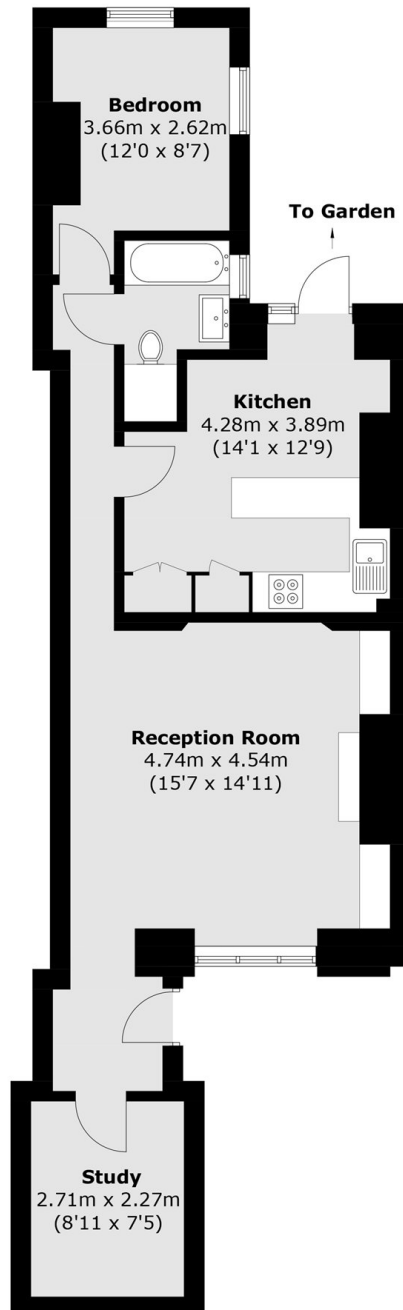
Tucked away on Alderney Street, this large one-bedroom garden flat has a really comfortable, easy feel to it, with plenty of space to spread out and make it your own.

The flat has a good-sized double bedroom, a separate study area that works perfectly for home working, and a bright living space with room to relax or entertain. The kitchen is a real highlight large enough to properly eat in, cook, and spend time in, rather than just pass through with direct access out to the private garden.

Alderney Street is located centrally in the ever-popular Pimlico Grid, only 0.4 miles from Victoria mainline



# STEP INSIDE ALDERNEY STREET



Total area (approx.): 65.7 sq. m (707.2 sq. ft)

**Pimlico & Westminster**  
020 7590 0800

Energy Rating: C We aim to make our particulars both accurate and reliable. However, they are not guaranteed; nor do they form part of an offer or contract. If you require clarification on any points then please contact us, especially if you're traveling some distance to view. Please note that appliances and heating systems have not been tested and therefore no warranties can be given as to their good working order

**MARSH &  
PARSONS**