



## Dors Close, NW9

£625,000

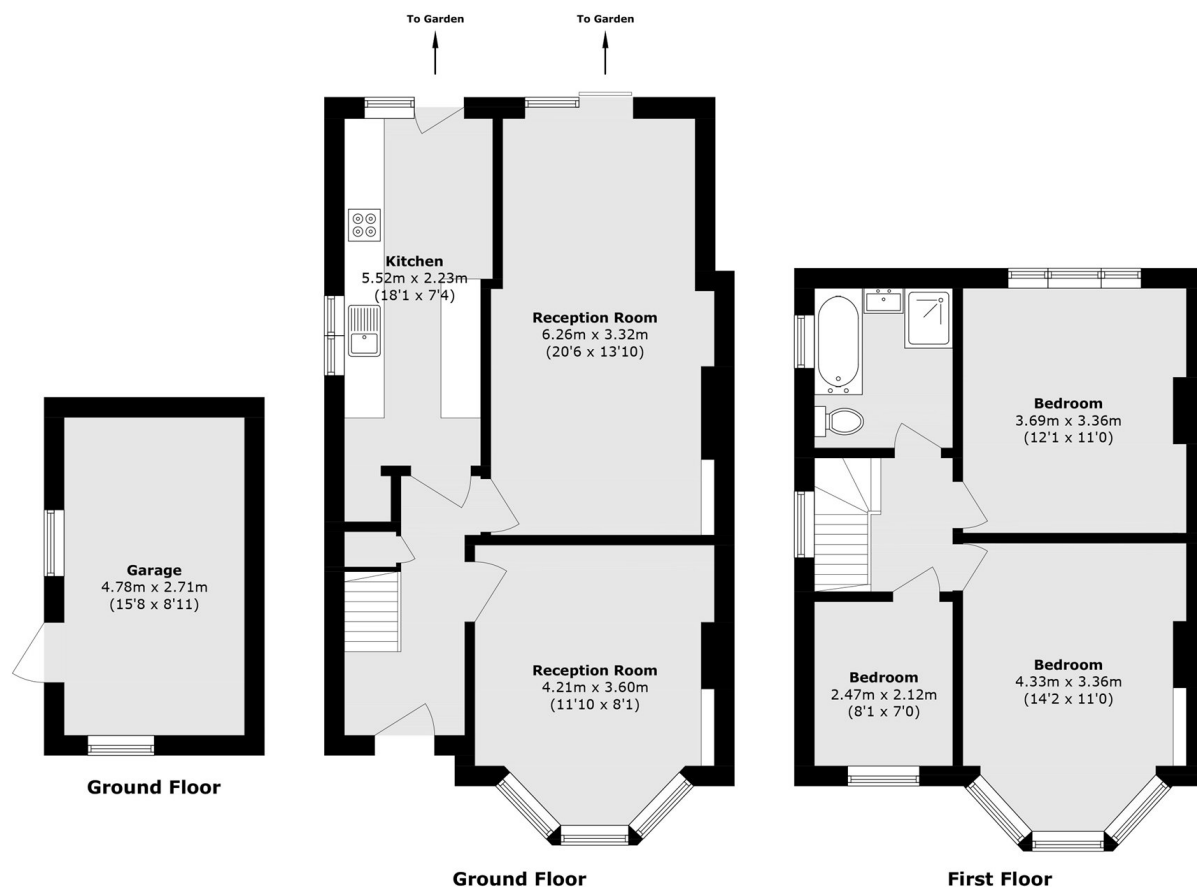
A three bed end of terrace house on a quiet residential street in Kingsbury. This charming home comes with two reception rooms, a separate kitchen, a large garden and is offered chain free.

Dors Close is ideally situated on a quiet road in Kingsbury, nearby Wembley Park and Kingsbury Station. The property is located nearby popular schools, Fryent Country Park and many amenities.

### Features

- Three Bedroom
- Driveway
- Garage
- Two Receptions
- Large Garden
- Chain Free

# Dors Close, London, NW9



Total area (approx.): 96.1 sq. m (1034.4 sq. ft)  
Garage area (approx.): 13.0 sq. m (139.9 sq. ft)