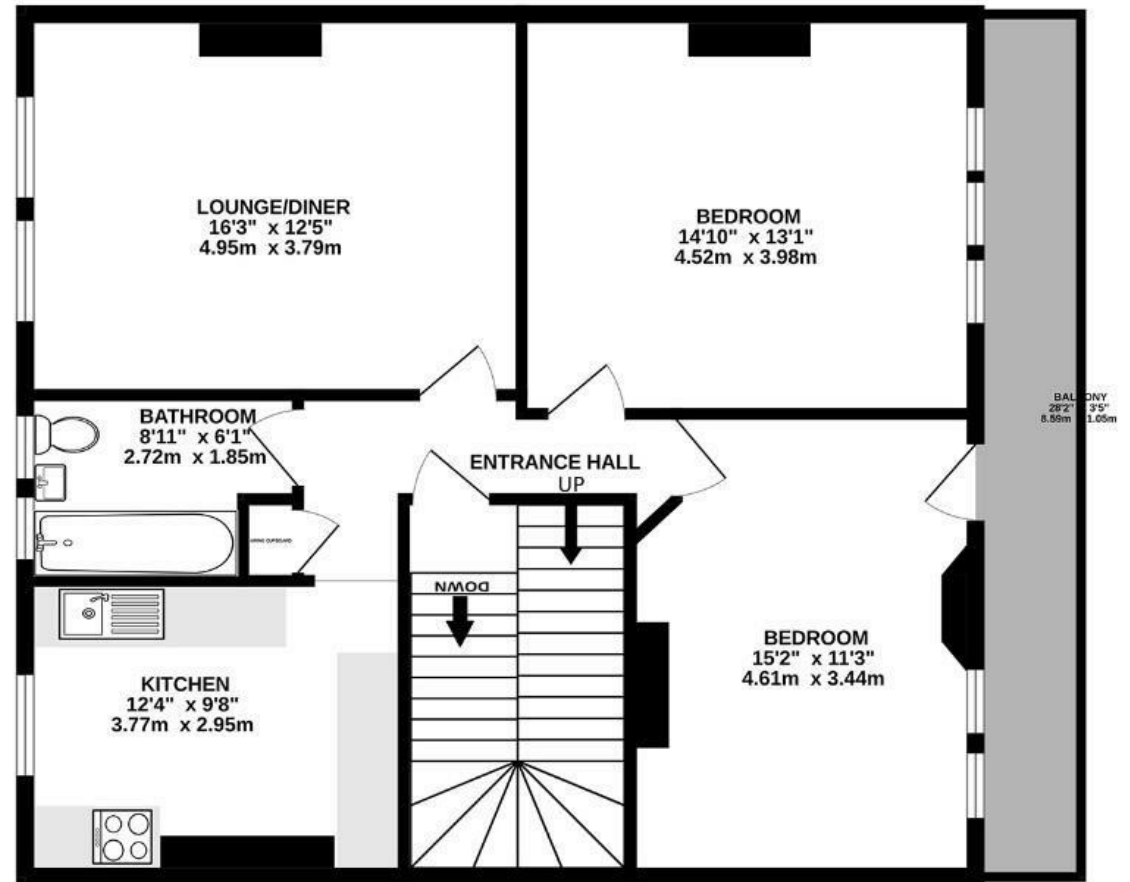


Coldharbour Road

WESTBURY PARK

APPROXIMATE FLOOR AREA
79.4 SQM / 854 SQFT



Illustrations are for reference purposes only, measurements are approximate, not to scale.

Boardwalk

Coldharbour , BRISTOL

£

£425,000



BS6 7SB

zzz

2 Bedrooms



1 Bathrooms

"We have really enjoyed calling this flat home. In the mornings, the light floods into the living room and you can look out on the rolling green hills at the edge of the city. Weekends often look like a walk on the downs followed by a pastry at Littleshop & Pantry. As soon as we walked in, we were drawn to the character fireplaces and high ceilings but more than anything, we have loved the sense of peace in this flat and the chance to host and share time with friends."

