



SINCLAIR ROAD, W14

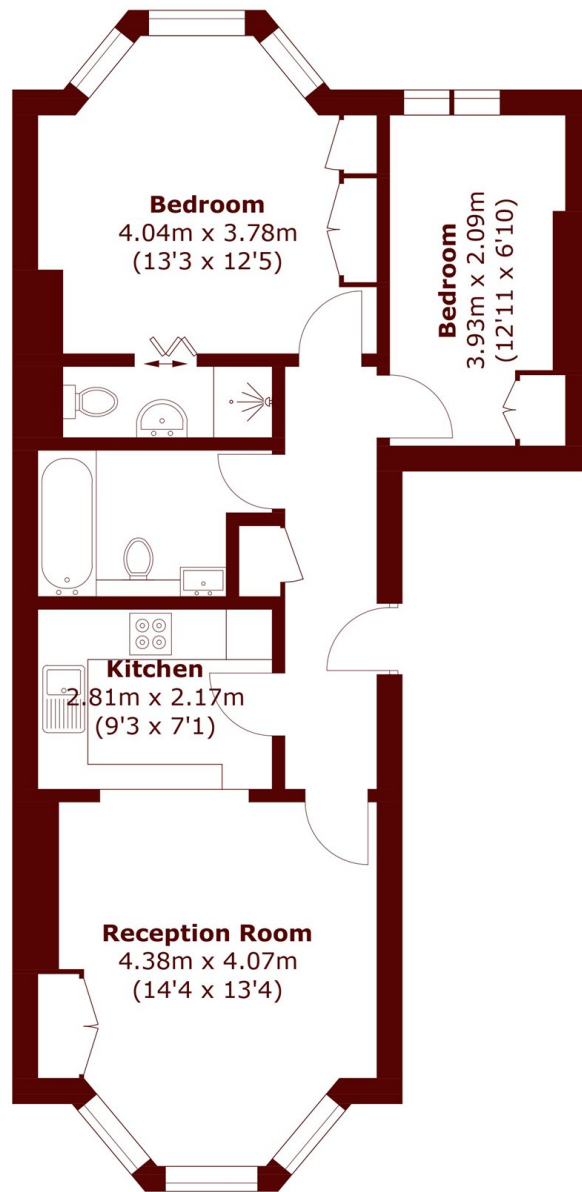
£550,000

An attractive two-bedroom apartment featuring generous ceiling heights, a bright and spacious reception room, and a modern kitchen and bathroom, all set within the highly sought-after Brook Green area.

Two Bedroom
Raised Ground Floor
Two Bathrooms

No Onwards Chain
Opportunity To Modernise
Kensington Olympia

STEP INSIDE SINCLAIR ROAD



Total area (approx.): 59.9 sq. m (644.8 sq. ft)

Brook Green
020 7605 7765

Energy Rating: We aim to make our particulars both accurate and reliable. However, they are not guaranteed; nor do they form part of an offer or contract. If you require clarification on any points then please contact us, especially if you're traveling some distance to view. Please note that appliances and heating systems have not been tested and therefore no warranties can be given as to their good working order

**MARSH &
PARSONS**